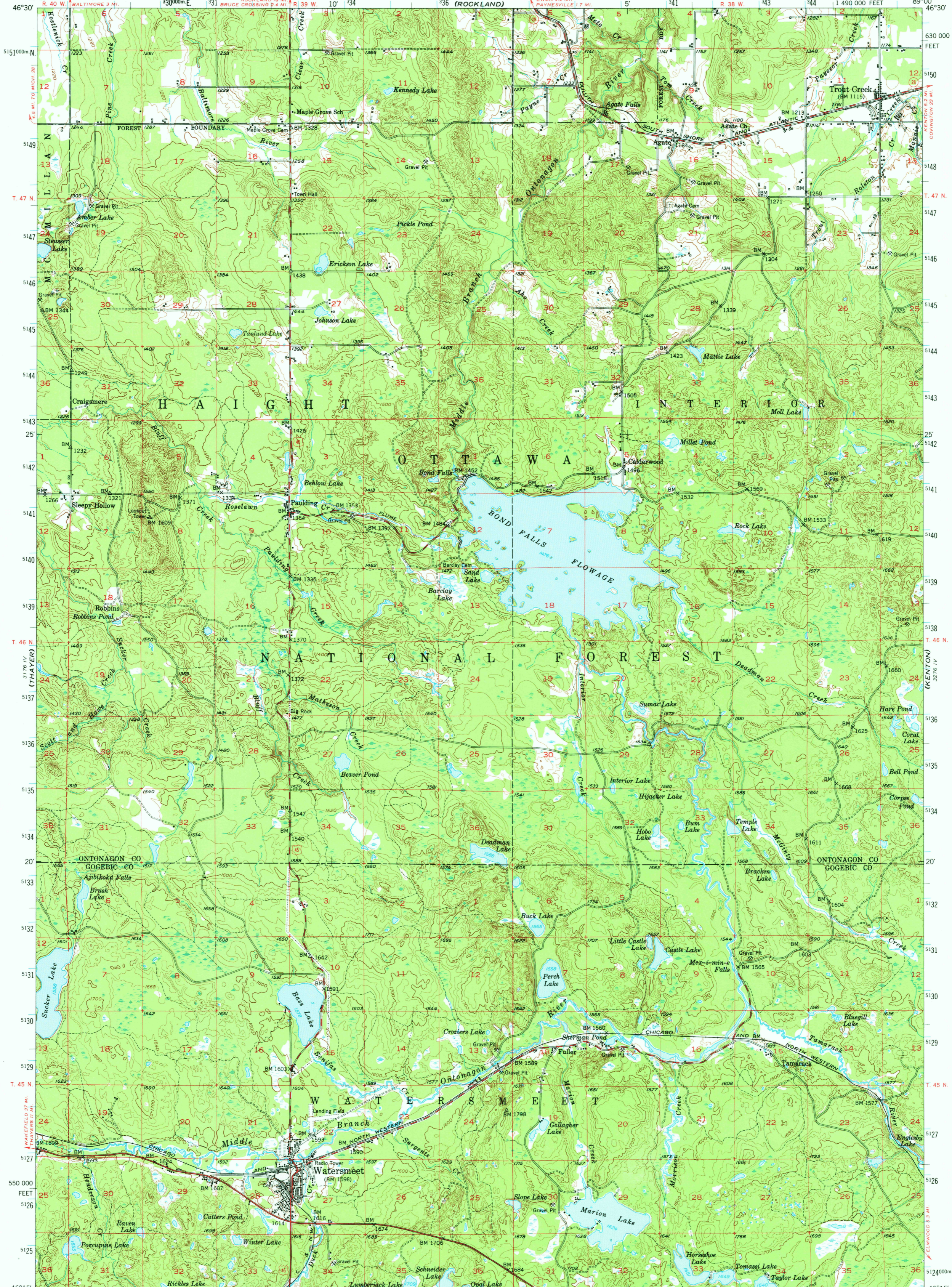


UNITED STATES
DEPARTMENT OF THE INTERIOR
GEOLOGICAL SURVEY

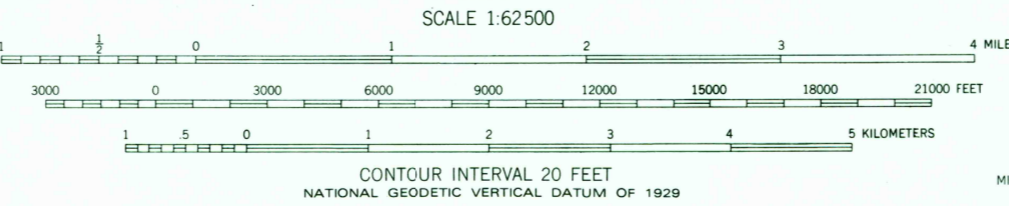


WATERSMEET QUADRANGLE
MICHIGAN
15 MINUTE SERIES (TOPOGRAPHIC)



Mapped, edited, and published by the Geological Survey

Control by USGS and USC&GS
Topography from aerial photographs by Kesh plotter
Aerial photographs taken 1951. Field checked 1952
Polyconic projection. 1927 North American datum
10,000-foot grid based on Michigan coordinate system,
north zone
1000-meter Universal Transverse Mercator grid ticks,
zone 16, shown in blue
There may be private inholdings within the boundaries of
the National or State reservations shown on this map



ROAD CLASSIFICATION
1963
Heavy-duty ——— Light-duty ———
Medium-duty ——— Unimproved dirt ———
U. S. Route ——— State Route ———

WATERSMEET, MICH.
N4615-W8900/15

1952
AMS 3176 1-SERIES V762

USGS
Historical File
Topographic Division

SEP 27 1979

2200

THIS MAP COMPLIES WITH NATIONAL MAP ACCURACY STANDARDS
FOR SALE BY U.S. GEOLOGICAL SURVEY, RESTON, VIRGINIA 22092
AND BY THE GEOLOGICAL SURVEY DIVISION
MICHIGAN DEPARTMENT OF NATURAL RESOURCES, LANSING, MICHIGAN 48909
A FOLDER DESCRIBING TOPOGRAPHIC MAPS AND SYMBOLS IS AVAILABLE ON REQUEST