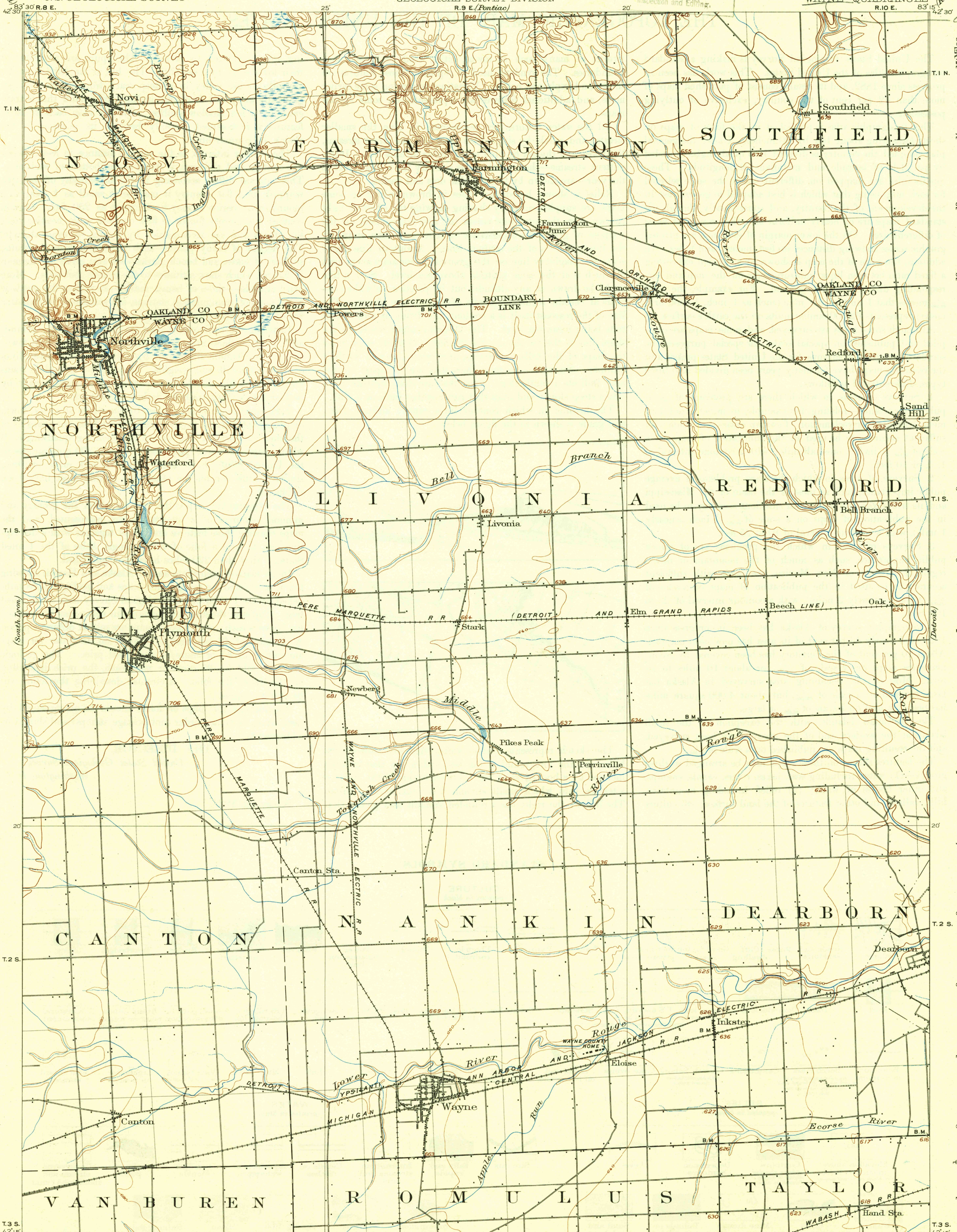


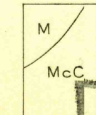
changed to
Plymouth

U. S. G. S.
FILE COPY
Inspection and Editing.

U. S. G. S.
FILE COPY
Inspection and Editing.



ENGRAVED JAN. 1905 BY U.S.G.S.
H.M. Wilson, Geographer
Robert Muldrow, Topographer in charge.
Topography by Robert Muldrow and J.T. McCoy.
Control by George T. Hawkins and J.R. Ellis.
Surveyed in 1903.



Scale 62500
Contour interval 20 feet.
Datum is mean sea level.

DIAGRAM OF TOWNSHIP

| | | | | | |
|----|----|----|----|----|----|
| 6 | 5 | 4 | 3 | 2 | 1 |
| 7 | 8 | 9 | 10 | 11 | 12 |
| 13 | 14 | 15 | 16 | 17 | 18 |
| 19 | 20 | 21 | 22 | 23 | 24 |
| 25 | 26 | 27 | 28 | 29 | 30 |
| 31 | 32 | 33 | 34 | 35 | 36 |

USGS
Historical File
Topographic Division
WAYNE, MICH.

NOTE: Geologic Folio No. 205, price 50 cents, treats of the geology and the clay, limestone, rock salt, glass sand, sand and gravel building stone, road metal, peat, and underground water resources of this area.

APR 21 1932 (2400) 2400