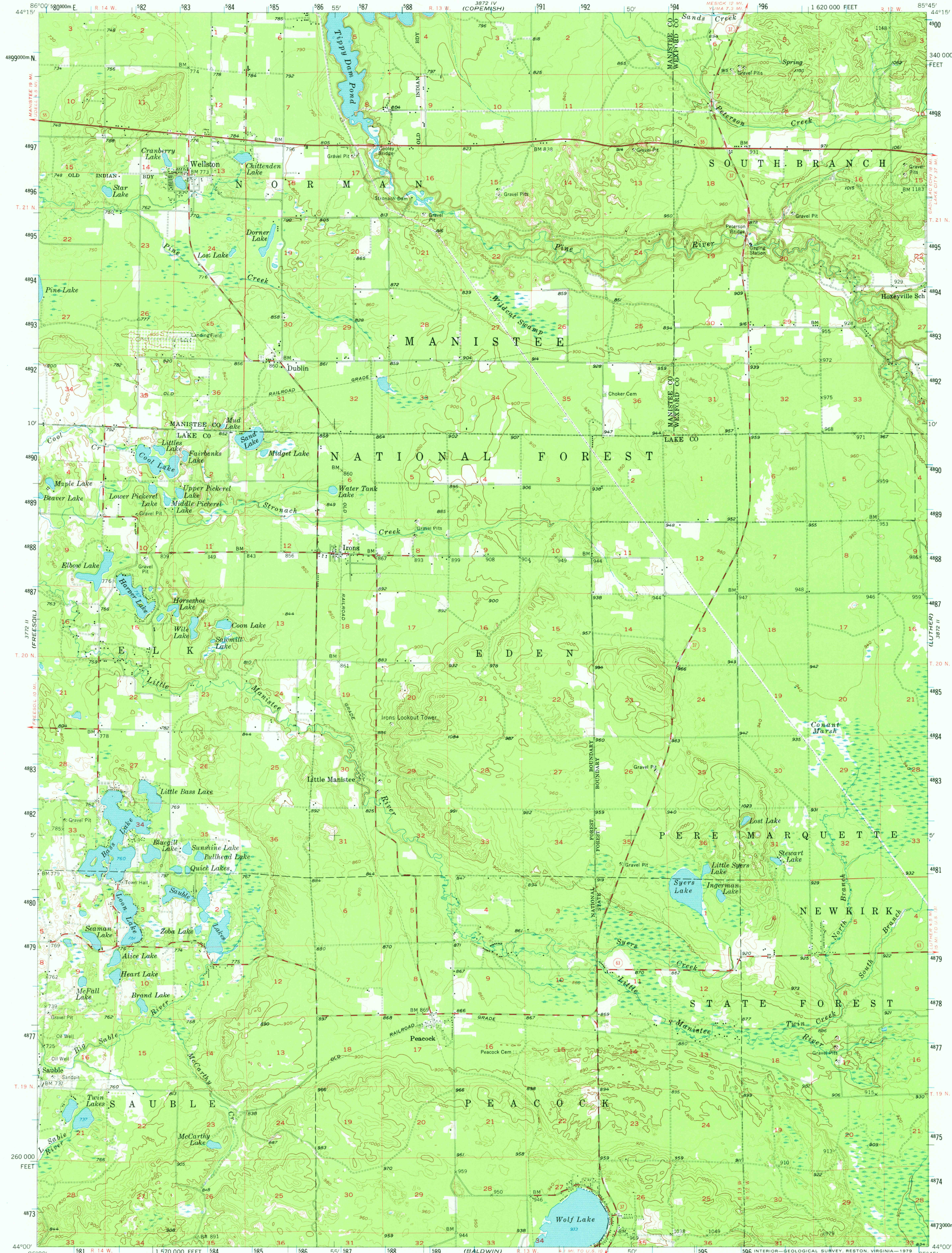


3721 (ONE-AREA)

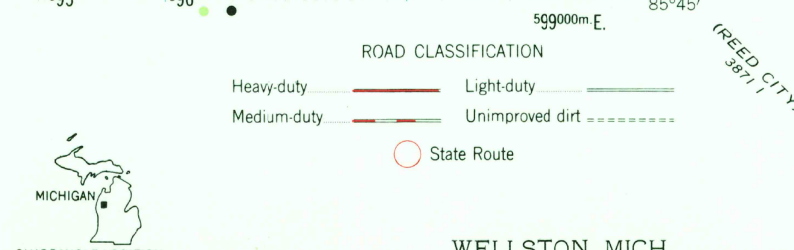
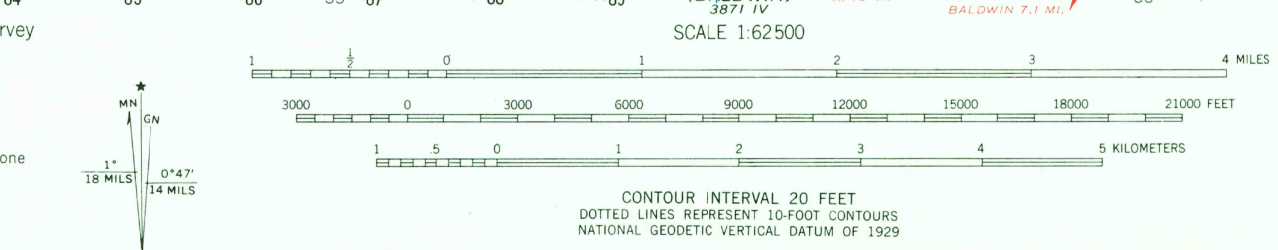
UNITED STATES
DEPARTMENT OF THE INTERIOR
GEOLOGICAL SURVEY

WELLSTON QUADRANGLE
MICHIGAN
15 MINUTE SERIES (TOPOGRAPHIC)

3721 (MESH)



Mapped, edited, and published by the Geological Survey
Control by USGS and USC&GS
Topography from aerial photographs by Kelsh plotter
Aerial photographs taken 1954. Field check 1957
Polyconic projection. 1927 North American datum
10,000-foot grid based on Michigan coordinate system, central zone
1000-meter Universal Transverse Mercator grid ticks,
zone 16, shown in blue
There may be private inholdings within the boundaries of
the National or State reservations shown on this map



THIS MAP COMPLIES WITH NATIONAL MAP ACCURACY STANDARDS
FOR SALE BY U.S. GEOLOGICAL SURVEY, RESTON, VIRGINIA 22092
AND BY THE GEOLOGICAL SURVEY DIVISION
MICHIGAN DEPARTMENT OF NATURAL RESOURCES, LANSING, MICHIGAN 48909
A FOLDER DESCRIBING TOPOGRAPHIC MAPS AND SYMBOLS IS AVAILABLE ON REQUEST

WELLSTON, MICH.
N 4400-W 8545/15
1957
AMS 3872 III-SERIES V762

MAR 19 1978

USGS
Historical File
Topographic Division

3800