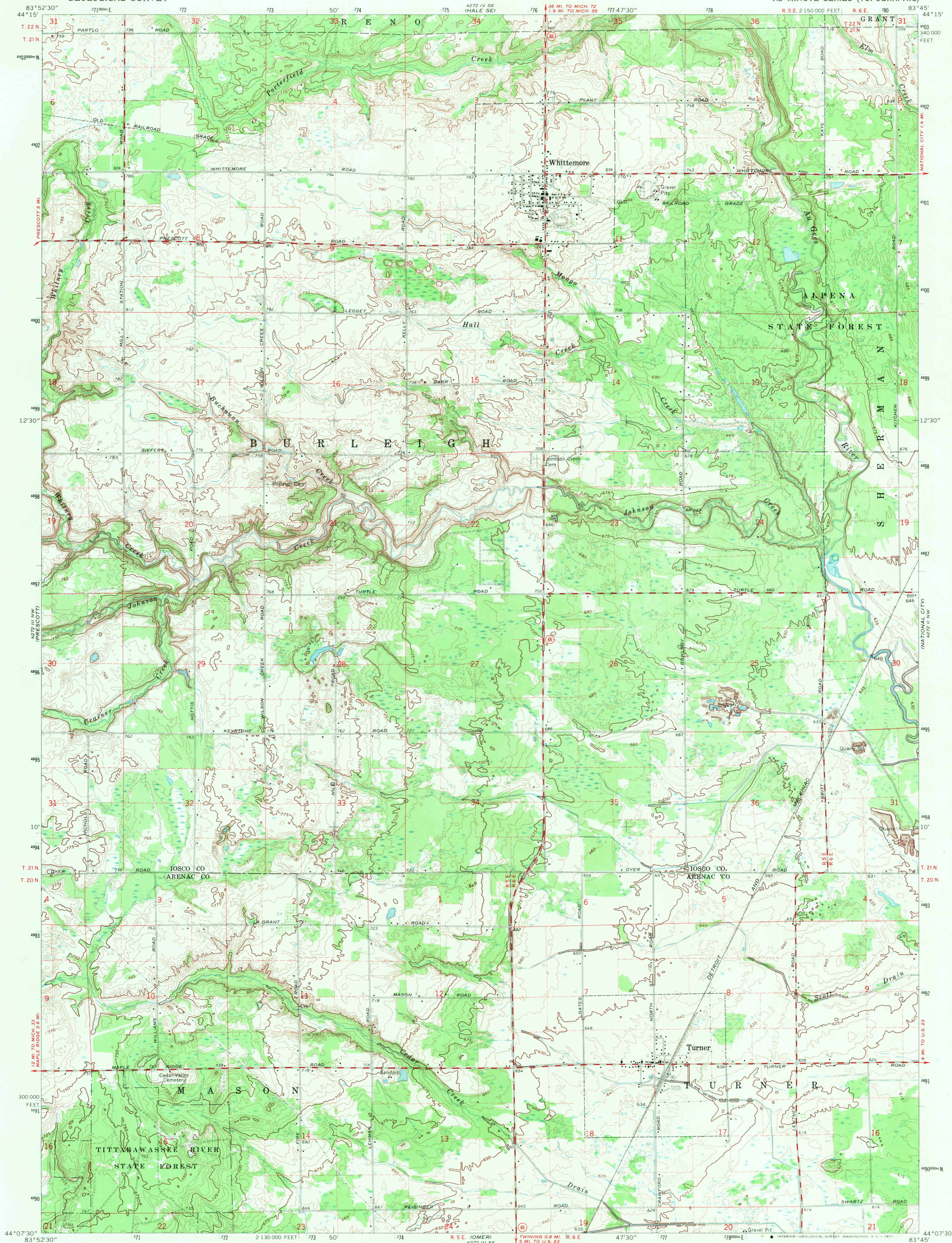
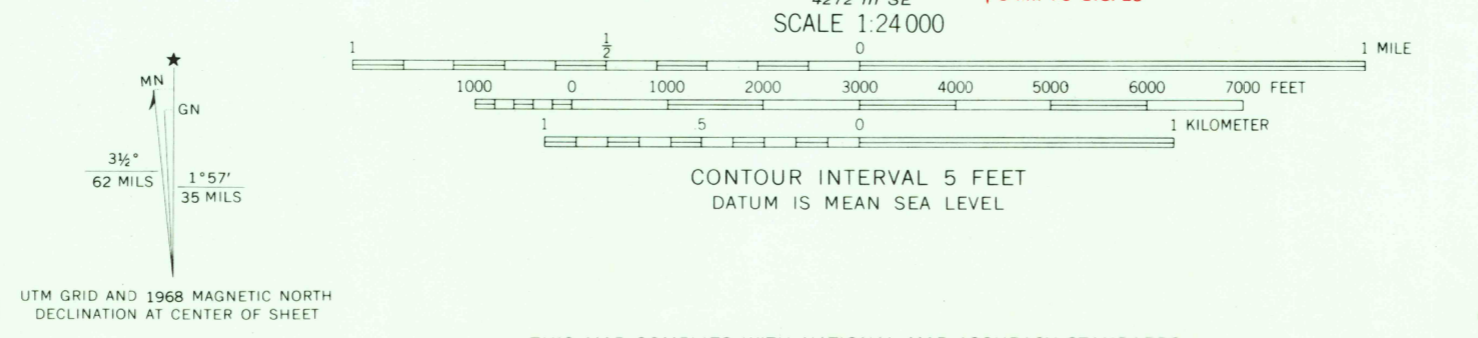


4272 IV NW  
(SAGE LAKE)

4272 I  
(TAWAS CITY 1:62,500)



Mapped, edited, and published by the Geological Survey  
Control by USGS and USC&GS  
Topography by photogrammetric methods from aerial  
photographs taken 1965. Field checked 1968  
Polyconic projection, 1927 North American datum  
10,000-foot grid based on Michigan coordinate system, central zone  
1000-meter Universal Transverse Mercator grid ticks,  
zone 17, shown in blue  
Fine red dashed lines indicate selected fence and field lines where  
generally visible on aerial photographs. This information is unchecked



USGS  
Historical File  
Topographic Division

ROAD CLASSIFICATION  
Secondary highway, all weather, Light-duty road, all weather,  
hard surface, improved surface  
Unimproved road, fair or dry  
weather  
State Route

U.S.G.S.  
FILE COPY  
TOPOGRAPHIC DIVISION

WHITEMORE, MICH.  
N4407.5-W8345/7.5  
1968  
AMS 4272 III NE-SERIES V862

2540

MAR 1 6 1971

THIS MAP COMPLIES WITH NATIONAL MAP ACCURACY STANDARDS  
FOR SALE BY U.S. GEOLOGICAL SURVEY, WASHINGTON, D.C. 20242  
A FOLDER DESCRIBING TOPOGRAPHIC MAPS AND SYMBOLS IS AVAILABLE ON REQUEST