

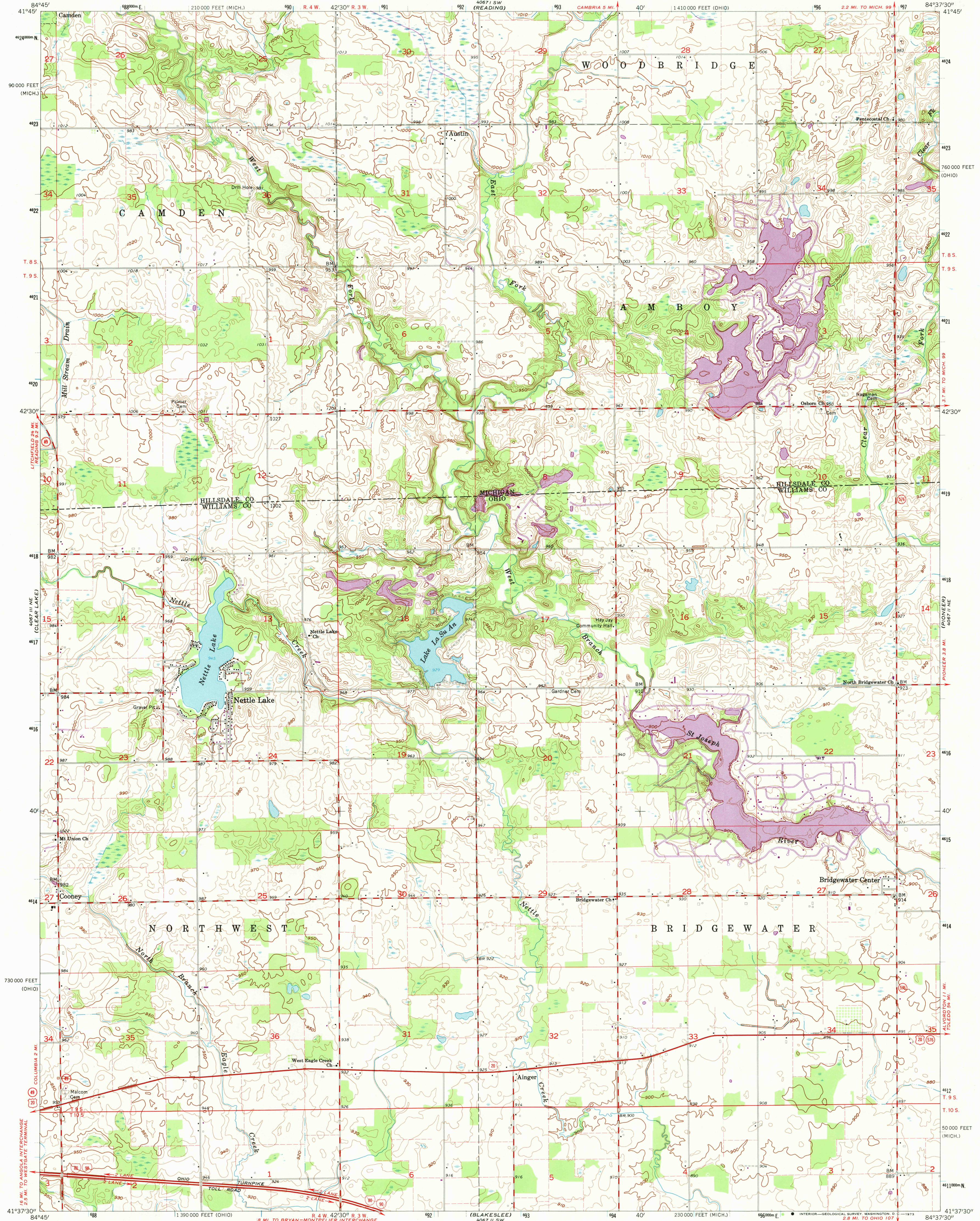
4067 1/2 SE
(CAMDEN)

UNITED STATES
DEPARTMENT OF THE INTERIOR
GEOLOGICAL SURVEY

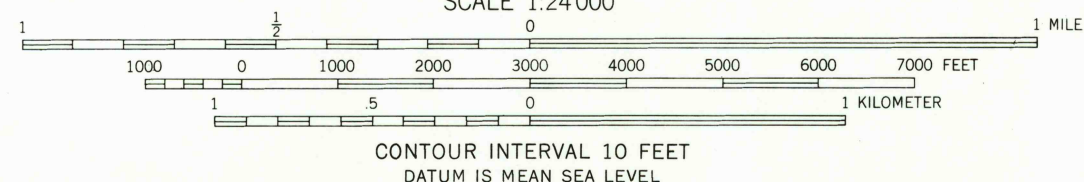
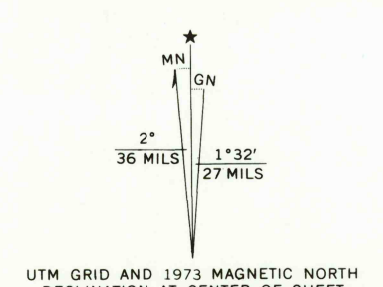
STATE OF OHIO
DEPARTMENT OF TRANSPORTATION
DEPARTMENT OF NATURAL RESOURCES
DIVISION OF GEOLOGICAL SURVEY

NETTLE LAKE QUADRANGLE
OHIO-MICHIGAN
7.5 MINUTE SERIES (TOPOGRAPHIC)

4067 1/2 SE
(FRONTIER)



Mapped, edited, and published by the Geological Survey
Control by USGS and USC&GS
Topography by photogrammetric methods from aerial
photographs taken 1959-60. Field checked 1961
Polyconic projection. 1927 North American datum
10,000-foot grids based on Ohio coordinate system, north zone
and Michigan coordinate system, east zone
1000-meter Universal Transverse Mercator grid ticks,
zone 16, shown in blue
Entire area lies within the Michigan Survey
Land lines based on the Michigan Meridian
Fine red dashed lines indicate selected fences and field lines where
generally visible on aerial photographs. This information is unchecked



ROAD CLASSIFICATION

Heavy-duty	Light-duty
Medium-duty	Unimproved dirt
Interstate Route	U.S. Route
	State Route

USGS HISTORICAL FILE
NETTLE LAKE, OHIO-MICH.

N4137.5-W8437.5/7.5

1961
PHOTOREVISED 1973
AMS 4067 1/2 NW-SERIES V852

THIS MAP COMPLIES WITH NATIONAL MAP ACCURACY STANDARDS
FOR SALE BY U.S. GEOLOGICAL SURVEY, WASHINGTON, D.C. 20242
A FOLDER DESCRIBING TOPOGRAPHIC MAPS AND SYMBOLS IS AVAILABLE ON REQUEST

Revisions shown in purple compiled in cooperation with
State of Ohio agencies from aerial photographs taken
1973. This information not field checked

DEC 10 1973

2785