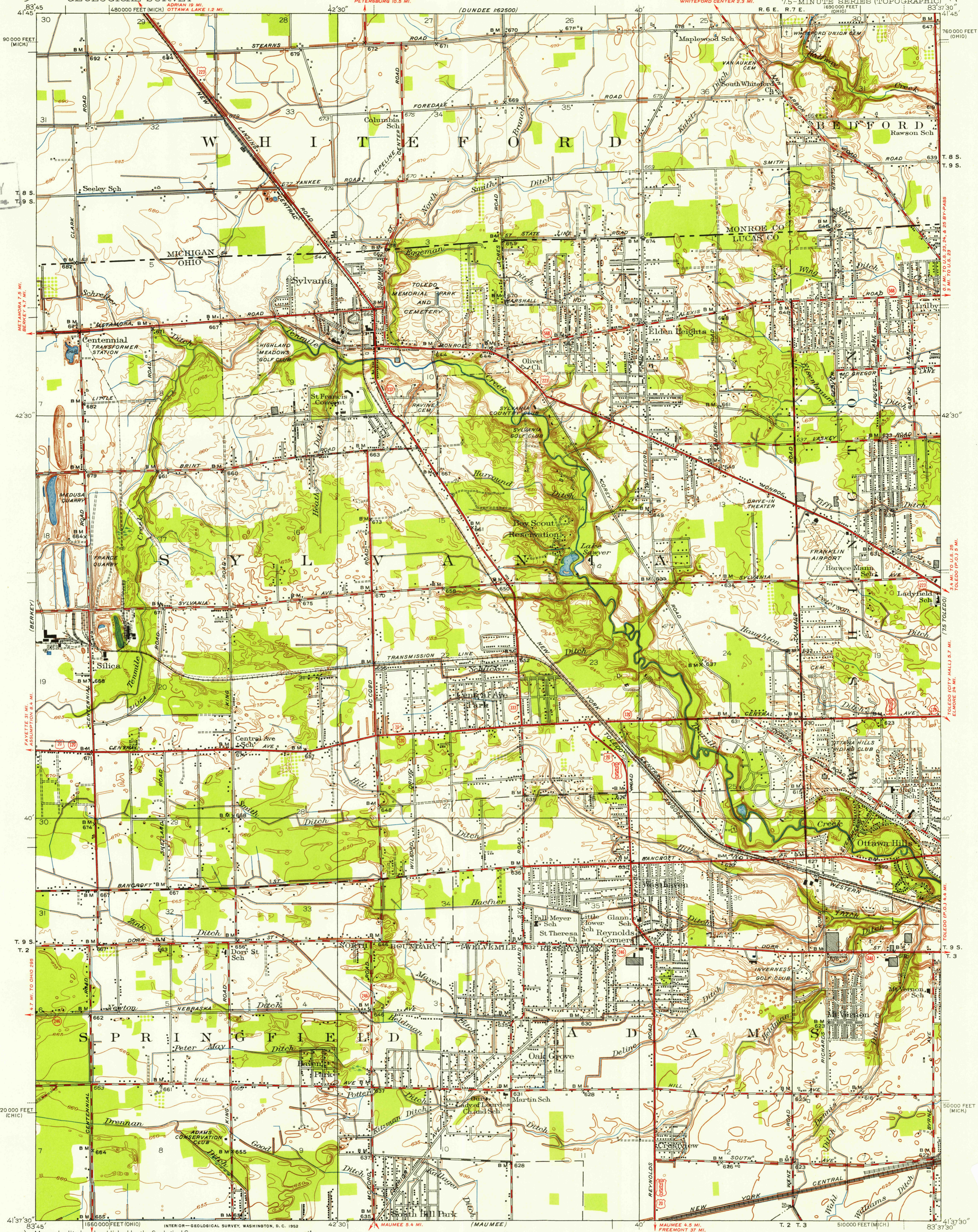


UNITED STATES
DEPARTMENT OF THE INTERIOR
GEOLOGICAL SURVEY

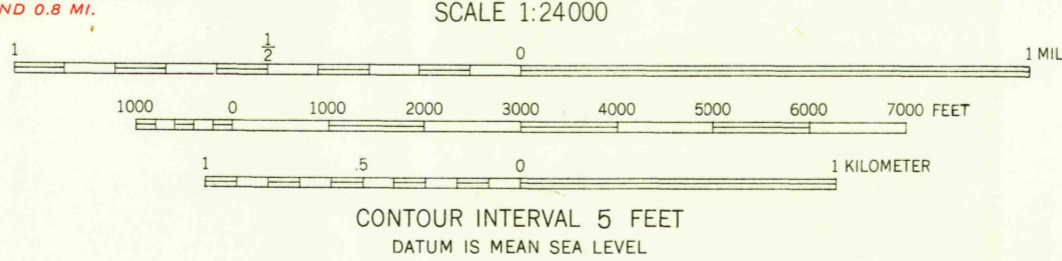
SYLVANIA - QUADRANGLE
OHIO - MICHIGAN

7.5-MINUTE SERIES (TOPOGRAPHIC)
1:62,500

U.S.G.S.
FILE COPY
Inspection and Editing



Maped, edited and published by the Geological Survey
Culture and drainage in part compiled from aerial photographs
Control by U.S. Geological Survey and Lucas County
Surveyed in 1934. Revised in 1951
Polyconic projection, 1927 North American datum
10,000-foot grids based on Ohio coordinate system, north zone and
Michigan coordinate system, east zone



USGS
Historical File
Topographic Division

ROAD CLASSIFICATION
Heavy-duty... 4 LANE LANE Light duty...
Medium-duty... 4 LANE LANE Unimproved dirt...
U. S. Route State Route

SYLVANIA, OHIO - MICH.
N 4137.5 - W 8337.5/7.5

U.S.G.S.
FILE COPY
Inspection and Editing

FOR SALE BY U. S. GEOLOGICAL SURVEY, WASHINGTON 25, D. C.
A FOLDER DESCRIBING TOPOGRAPHIC MAPS AND SYMBOLS IS AVAILABLE ON REQUEST

1951

USGS Library
Region VA
Topo Archive