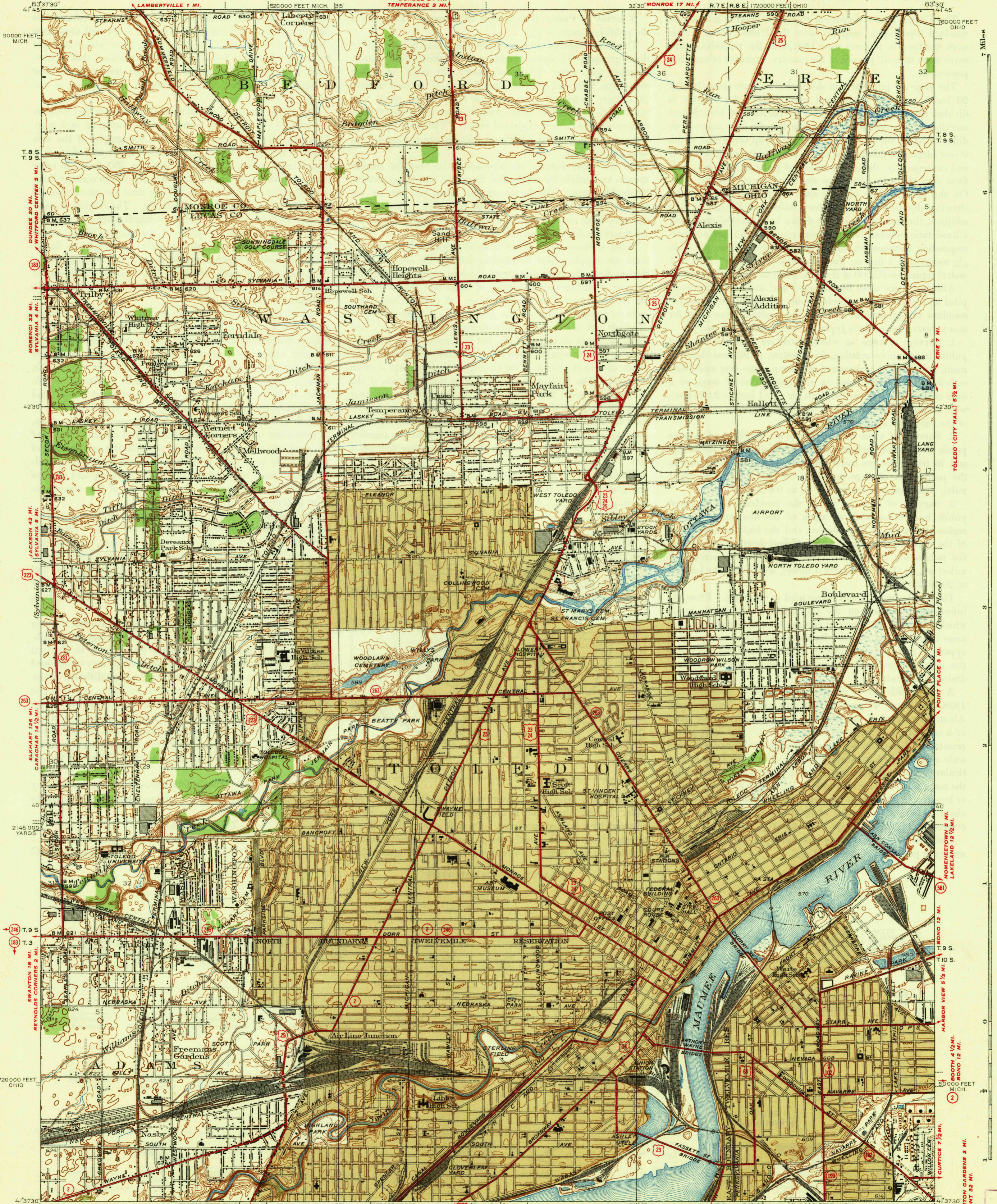


UNITED STATES
DEPARTMENT OF THE INTERIOR
GEOLOGICAL SURVEY

FILE COPY
Inspection and Editing.

MONROE 15 1/2 MI. OHIO-MICHIGAN
ERIE 9 1/2 MI. TOLEDO QUADRANGLE



Topography by H.A. Bean, J.H. Saxon, City of Toledo, and Lucas County Culture and drainage in part compiled from aerial photographs Surveyed in 1934
JOHNSTON CORNERS 3 MI.
SWANTON 14 MI.
MAUMEE 5 MI.
WATERVILLE 18 1/2 MI.

Scale 1:62,500
1 Mile
5000 Feet
1 Kilometer
Contour interval 5 feet
Datum is mean sea level

ROADS IMPERVIOUSLY SURFACED
ROADS OTHERWISE SURFACED
NUMBER OF LANES 3 4 4
UNITED STATES ROUTE NUMBER
STATE ROUTE NUMBER

TOLEDO, OHIO-MICH.
Edition of 1938
2645:0675 / 99;
POLYCONIC PROJECTION, 1927 NORTH AMERICAN DATUM
5000 YARD GRID BASED ON U.S. ZONE SYSTEM B
10000 FOOT GRID BASED ON OHIO (NORTH) AND MICHIGAN (EAST) RECTANGULAR COORDINATE SYSTEMS
MOLINE 5 MI.
STONY RIDGE 8 MI.

1933
Historical File
Topographic Division
Inspection and Editing.