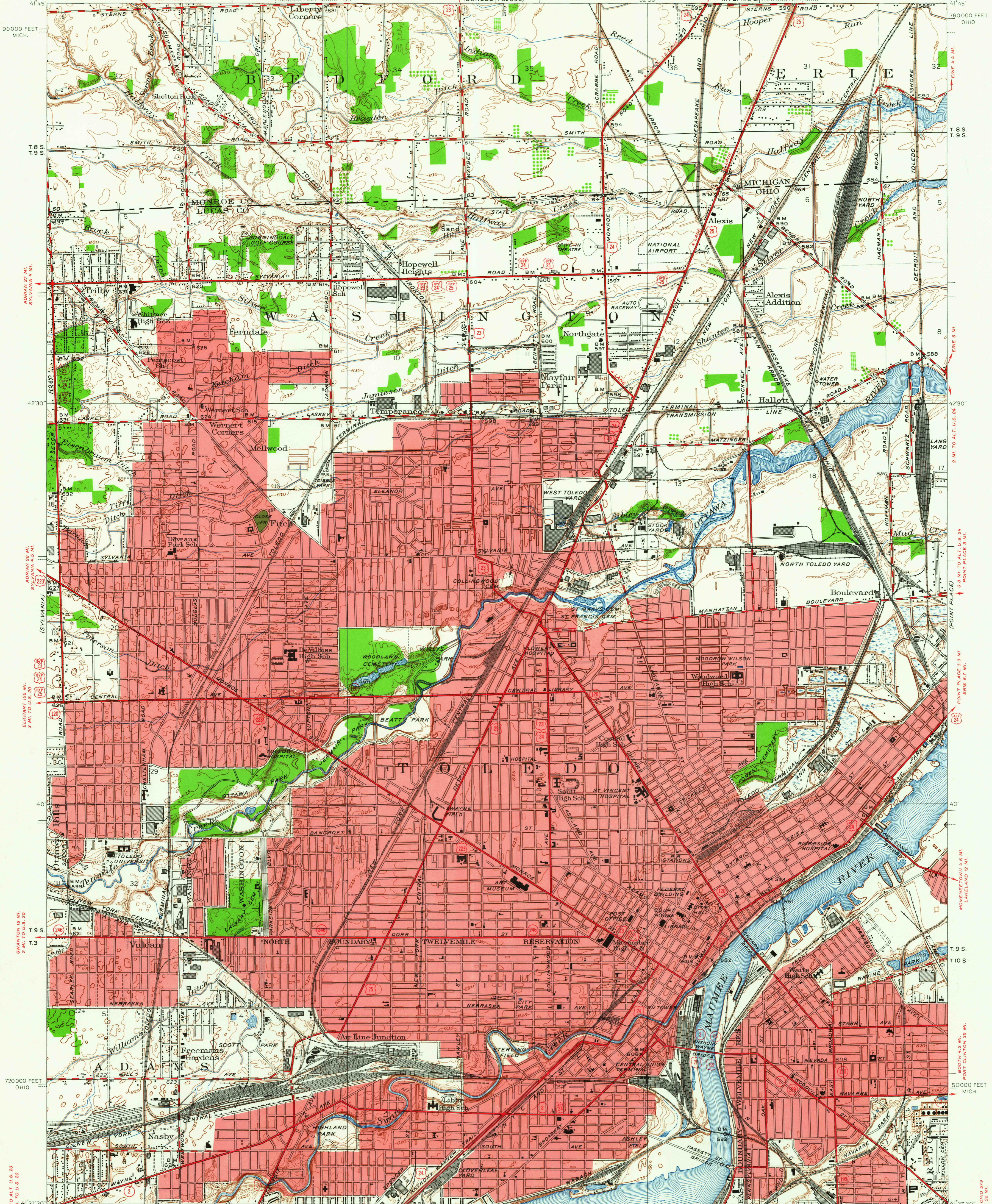
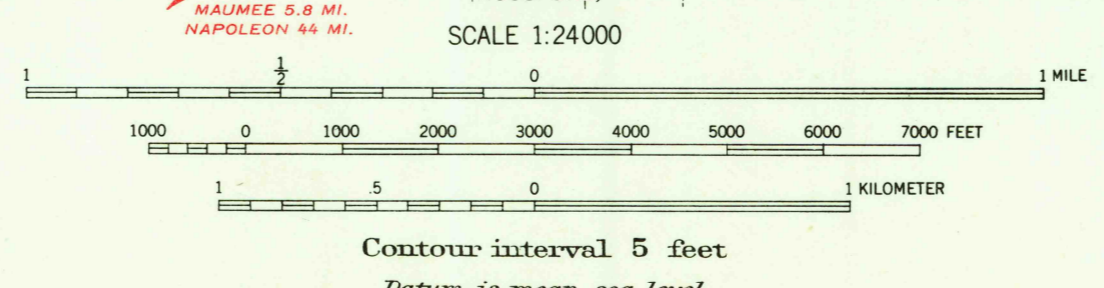


UNITED STATES
DEPARTMENT OF THE INTERIOR
GEOLOGICAL SURVEY

TOLEDO QUADRANGLE
OHIO-MICHIGAN
75-MINUTE SERIES (TOPOGRAPHIC)



Mapped, edited, and published by the Geological Survey
Control by USGS, USCGS and USCE
Culture and drainage in part compiled from aerial photographs
Surveyed in 1934; Revised in 1952
Polyconic projection, 1927 North American datum
10000-foot grids based on Ohio coordinate system, north zone
and Michigan coordinate system, east zone
Red tint indicates areas in which only
landmark buildings are shown



ROAD CLASSIFICATION

Heavy-duty	4 LANE 18 LANE	Light-duty
Medium-duty	4 LANE 6 LANE	Unimproved dirt

U.S. Route State Route

FOR SALE BY U. S. GEOLOGICAL SURVEY, WASHINGTON 25, D. C.
A FOLDER DESCRIBING TOPOGRAPHIC MAPS AND SYMBOLS IS AVAILABLE ON REQUEST

TOLEDO, OHIO-MICH.
N41375-W8330/75

1952
APR 20 1964