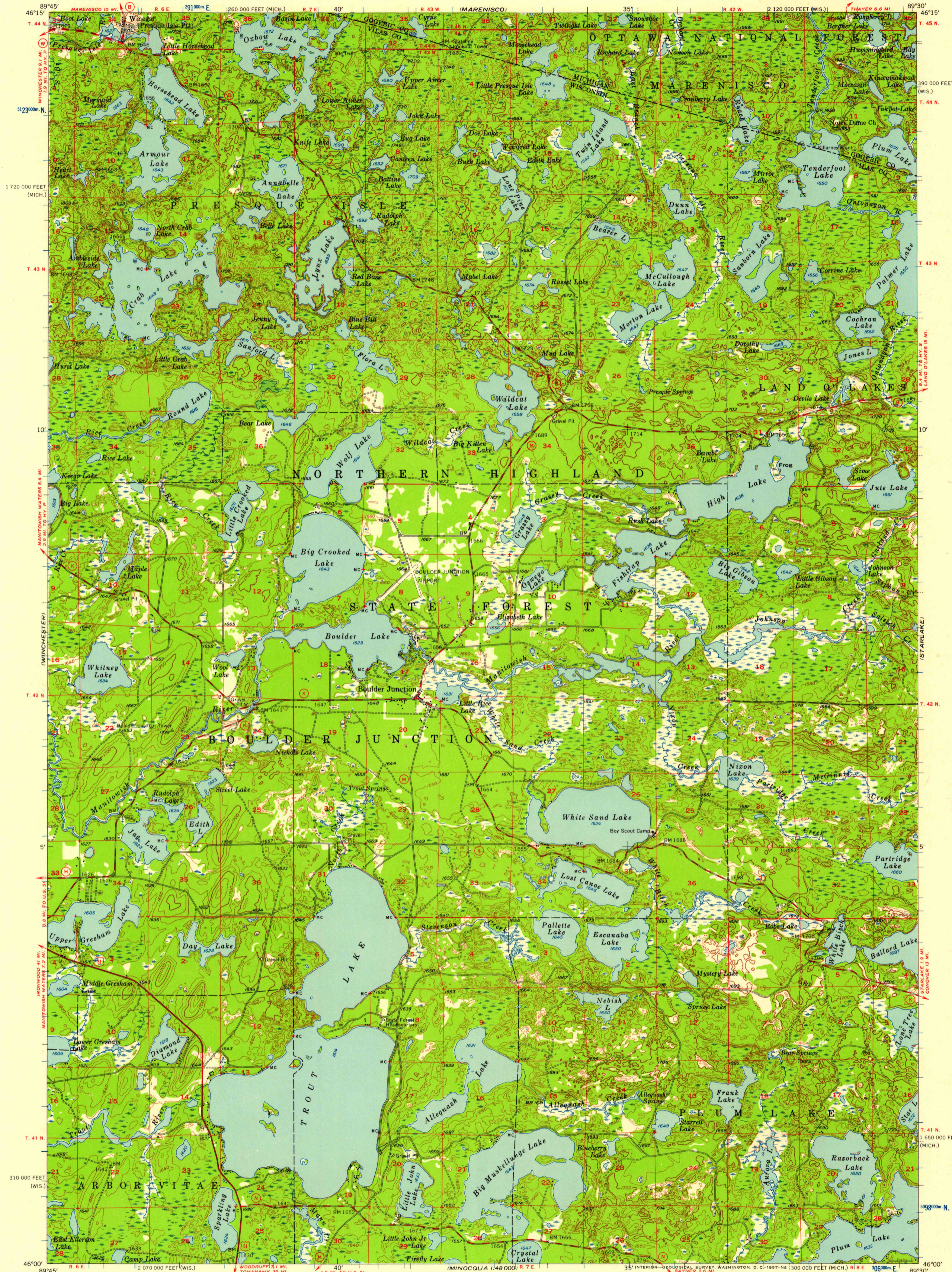
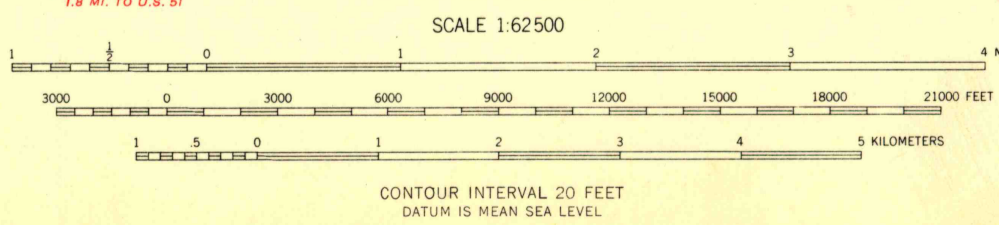


UNITED STATES
DEPARTMENT OF THE INTERIOR
GEOLOGICAL SURVEY

BOULDER JUNCTION QUADRANGLE
WISCONSIN-MICHIGAN
15 MINUTE SERIES (TOPOGRAPHIC)



Maped, edited, and published by the Geological Survey
Control by USGS and USC&GS
Topography from aerial photographs by photogrammetric methods
Aerial photographs taken 1952. Field check 1955.
Polyconic projection. 1927 North American datum
10,000-foot grids based on Wisconsin coordinate system,
north zone, and Michigan coordinate system, west zone
1000-meter Universal Transverse Mercator grid ticks,
zone 16, shown in blue



ROAD CLASSIFICATION
Heavy-duty _____ Light-duty _____
Medium-duty _____ Unimproved dirt _____
U.S. Route _____ State Route _____

QUADRANGLE LOCATION

THIS MAP COMPLIES WITH NATIONAL MAP ACCURACY STANDARDS
FOR SALE BY U. S. GEOLOGICAL SURVEY, WASHINGTON 25, D. C.
AND BY THE WISCONSIN GEOLOGICAL AND NATURAL HISTORY SURVEY, MADISON 6, WISCONSIN
A FOLDER DESCRIBING TOPOGRAPHIC MAPS AND SYMBOLS IS AVAILABLE ON REQUEST

BOULDER JUNCTION, WIS.-MICH.
N4600-W8930/15
1955

U.S.G.S.
FILE COPY
TOPOGRAPHIC DIVISION

JUN - 3 1957
2615