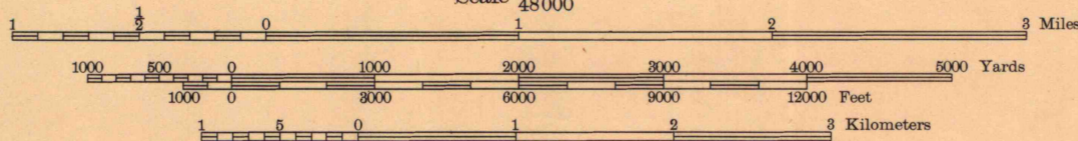




THIS AREA IS SHOWN ON THE MAP OF MENOMINEE IRON RANGE,  
SURVEYED IN 1898, SCALE 1:62500

Compiled by Geological Survey  
from aerial photographs  
Field examination in 1939

APPROXIMATE MEAN  
DECLINATION, 1939



Preliminary edition 1947  
Polyconic projection, 1927 North American datum

IRON MOUNTAIN, WIS. MICH.

N 4545-W 8800/15

MAP AND AIR PHOTO LIBRARY

FEB 27 1970

University of Wisconsin

1947

1947  
copy  
1-1