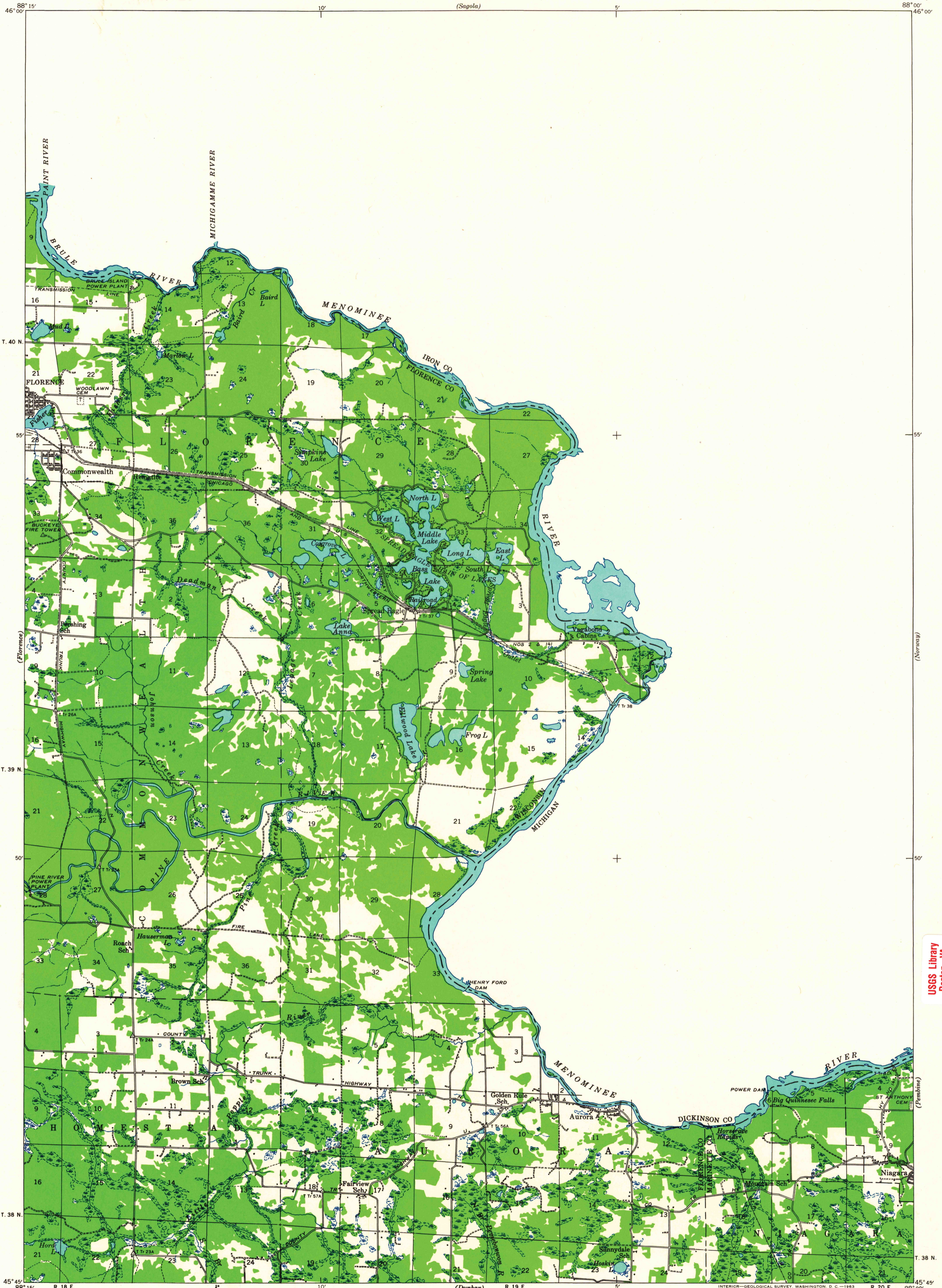


(Capeau, Folio)
1:25,000

UNITED STATES
DEPARTMENT OF THE INTERIOR
GEOLOGICAL SURVEY

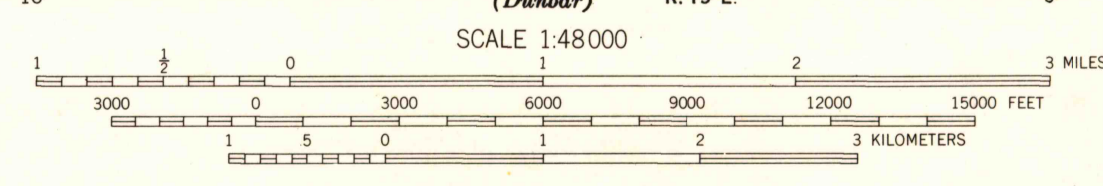
STATE OF WISCONSIN
STATE HIGHWAY COMMISSION

WISCONSIN-MICHIGAN
IRON MOUNTAIN QUADRANGLE
15-MINUTE SERIES



Compiled by Geological Survey
from aerial photographs
Field examination in 1939

TRUE NORTH
MAGNETIC NORTH
APPROXIMATE MEAN
DECLINATION, 1939



Polyconic projection. 1927 North American datum

FOR SALE BY U. S. GEOLOGICAL SURVEY, WASHINGTON 25, D. C.
AND BY THE WISCONSIN GEOLOGICAL AND NATURAL HISTORY SURVEY, MADISON 6, WISCONSIN
A FOLDER DESCRIBING TOPOGRAPHIC MAPS AND SYMBOLS IS AVAILABLE ON REQUEST



IRON MOUNTAIN, WIS.-MICH.
N 4545-W 8800/15
1939

U.S.G.S.
FILE COPY
TOPOGRAPHIC DIVISION

1190
AUG - 6 1963

USGS Library
Reston, VA.
Topo Archive