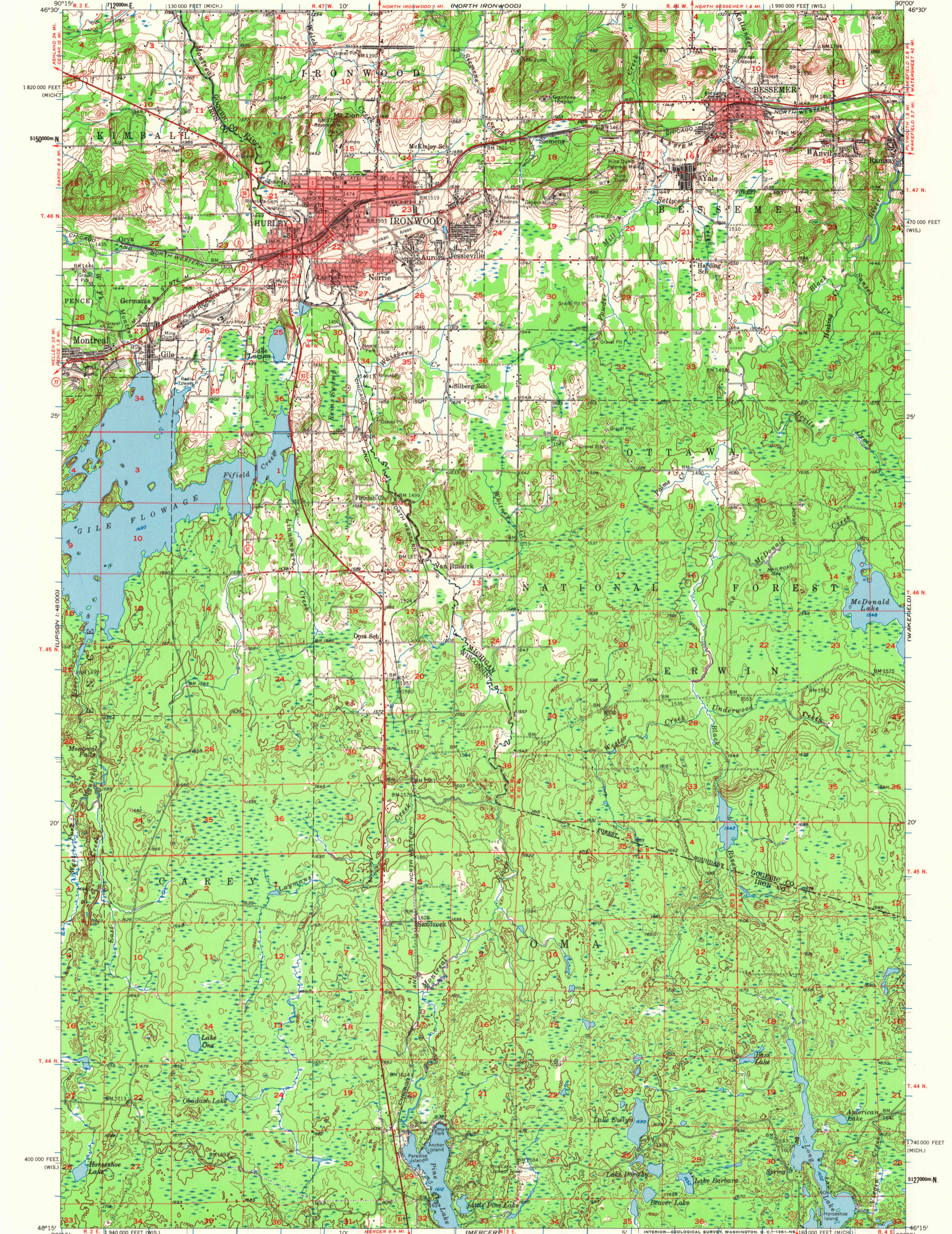


UNITED STATES
DEPARTMENT OF THE INTERIOR
GEOLOGICAL SURVEY

IRONWOOD QUADRANGLE
WISCONSIN-MICHIGAN
15 MINUTE SERIES (TOPOGRAPHIC)



Mapped, edited, and published by the Geological Survey

Control by USGS and USC&GS

Topography from aerial photographs by Kesh plotter

Aerial photographs taken 1951. Field check 1955

Polyconic projection. 1927 North American datum

10,000-foot grids based on Wisconsin coordinate system,

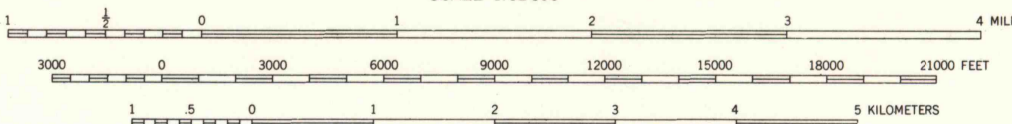
north zone, and Michigan coordinate system, west zone

1000-meter Universal Transverse Mercator grid ticks,

zone 15, shown in blue

Red tint indicates areas in which only

landmark buildings are shown



SCALE 1:62,500

CONTOUR INTERVAL 20 FEET

DATUM IS MEAN SEA LEVEL

ROAD CLASSIFICATION

Heavy-duty ——— Light-duty ———

Medium-duty ——— Unimproved dirt ———

U.S. Route ——— State Route ———



QUADRANGLE LOCATION

The north half of this area also covered

by 1:24,000 scale maps of Bessemer and

Ironwood, 7.5 minute quadrangles, surveyed 1955.

IRONWOOD, WIS.-MICH.

N 4615—W 9000/15

1955

USGS
Historical File
Topographic Division

JUN 05 1974

1690