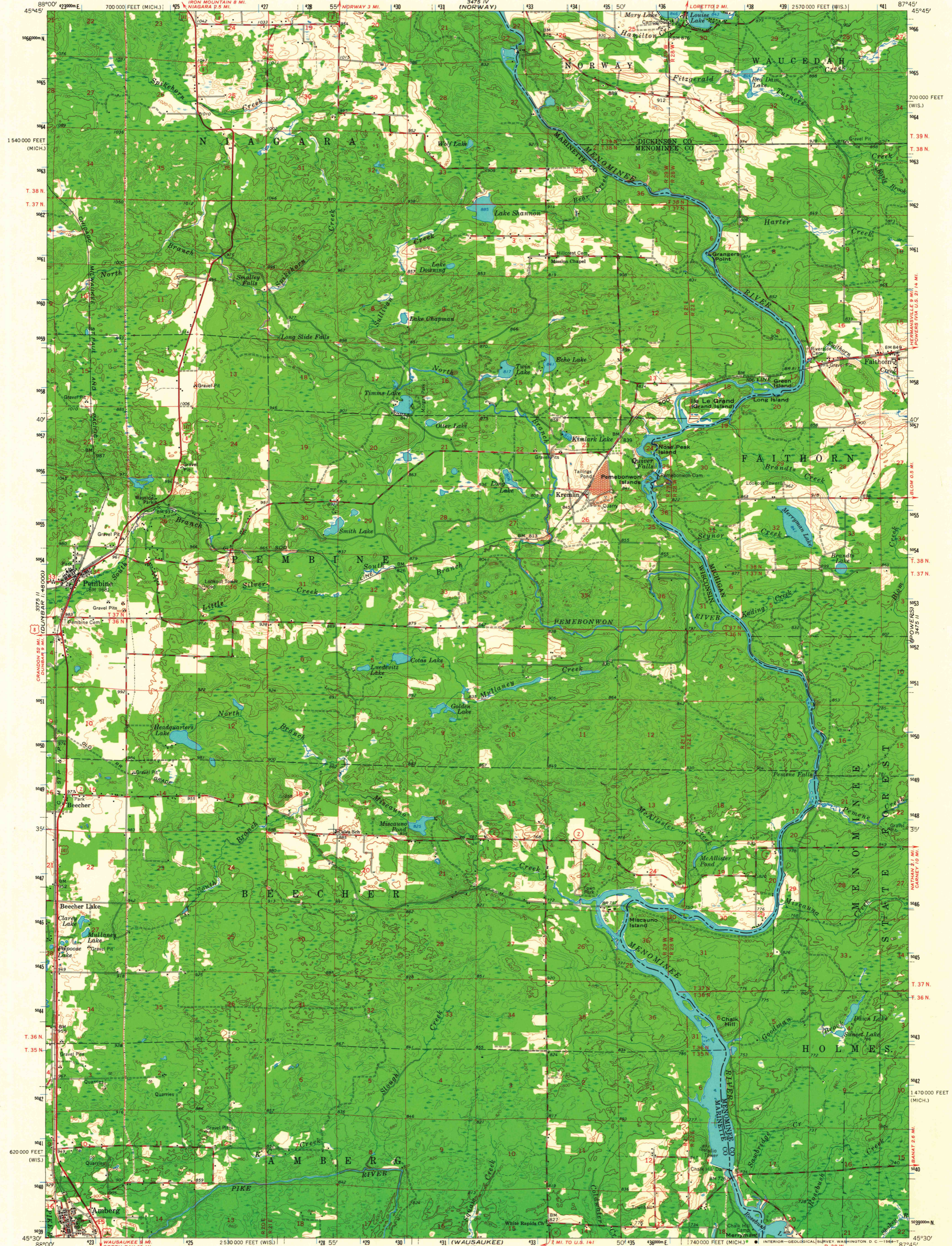
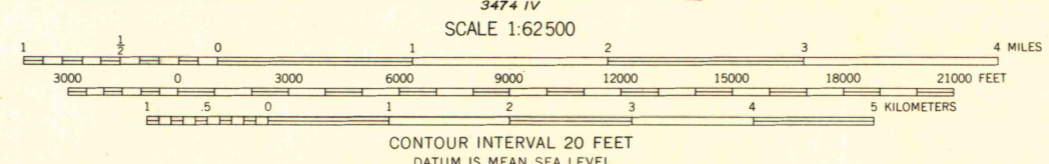


UNITED STATES  
DEPARTMENT OF THE INTERIOR  
GEOLOGICAL SURVEY

PEMBINE QUADRANGLE  
WISCONSIN-MICHIGAN  
15 MINUTE SERIES (TOPOGRAPHIC)



Mapped, edited, and published by the Geological Survey  
Control by USGS and USC&GS  
Topography by photogrammetric methods from aerial  
photographs taken 1954-55 and 1962. Field checked 1963  
Polyconic projection. 1927 North American datum  
10,000-foot grids based on Wisconsin coordinate system,  
central zone and Michigan coordinate system, west zone  
1000-meter Universal Transverse Mercator grid ticks,  
zone 16, shown in blue



ROAD CLASSIFICATION  
Heavy-duty ——— Light-duty ———  
Medium-duty ——— Unimproved dirt ———  
U. S. Route ——— State Route ———



PEMBINE, WIS.-MICH.  
N4530-W8745/15

1963  
AMS 3475 III-SERIES V761

1963  
Copy  
1-1

MAP AND AIR PHOTO LIBRARY  
University of Wisconsin