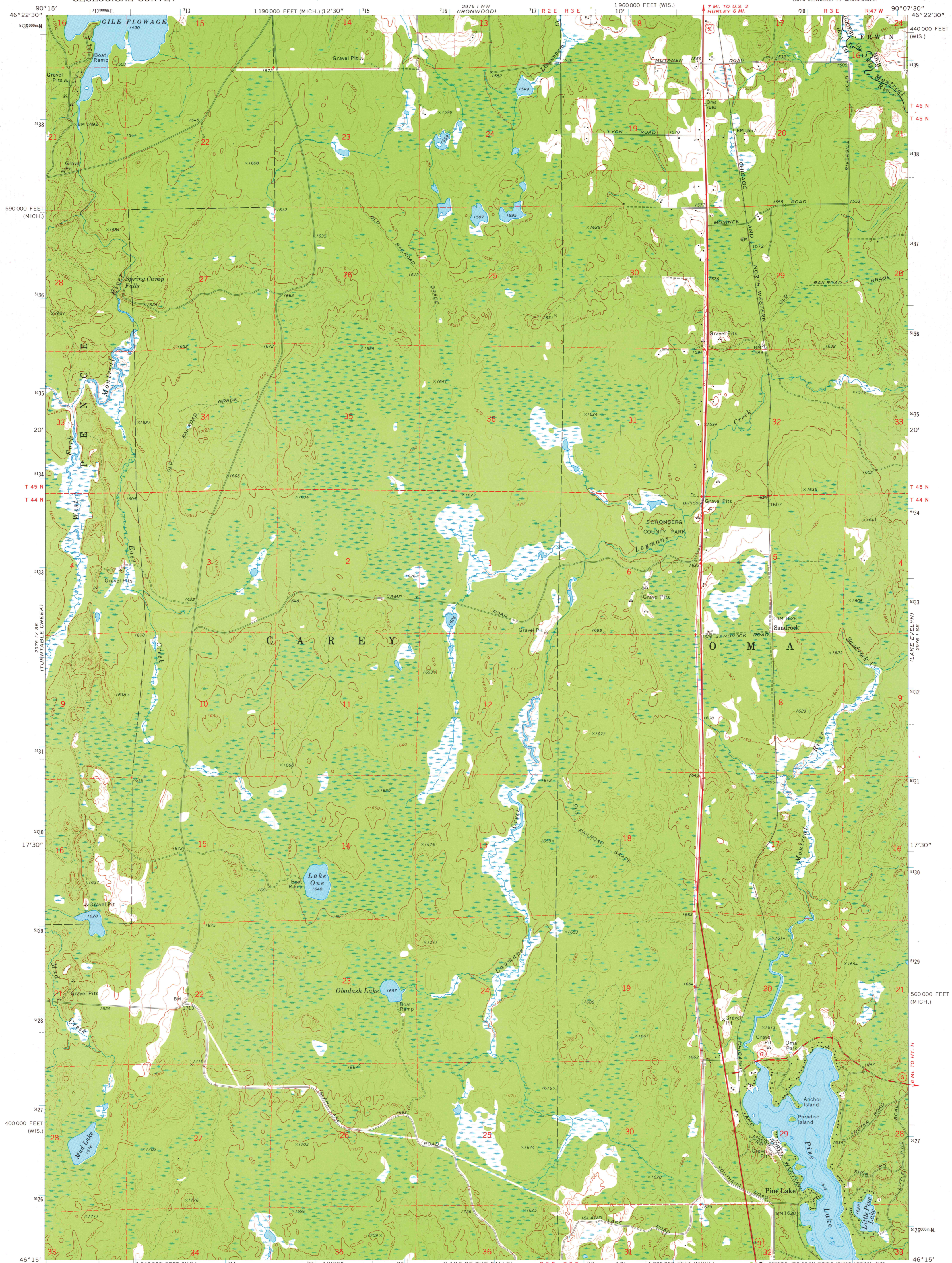


UNITED STATES  
DEPARTMENT OF THE INTERIOR  
GEOLOGICAL SURVEY

PINE LAKE QUADRANGLE  
WISCONSIN-MICHIGAN  
7.5 MINUTE SERIES (TOPOGRAPHIC)



Mapped, edited, and published by the Geological Survey

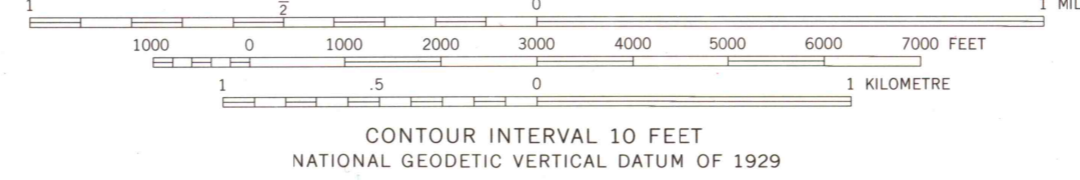
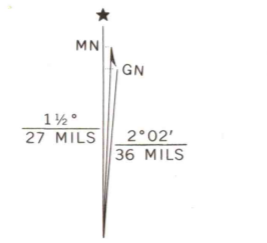
Control by USGS and NOS/NOAA

Topography by photogrammetric methods from aerial photographs taken 1973. Field checked 1973

Hydrography compiled from charts furnished by Wisconsin Department of Natural Resources

Projection: Wisconsin coordinate system, north zone (Lambert conformal conic)  
10,000-foot grid ticks based on Wisconsin coordinate system, north zone, and Michigan coordinate system, north zone  
1000-metre Universal Transverse Mercator grid ticks, zone 15, shown in blue. 1927 North American datum

Fine red dashed lines indicate selected fence and field lines where generally visible on aerial photographs  
This information is unchecked



THIS MAP COMPLIES WITH NATIONAL MAP ACCURACY STANDARDS  
FOR SALE BY U. S. GEOLOGICAL SURVEY, RESTON, VIRGINIA 22092  
AND BY THE WISCONSIN GEOLOGICAL AND NATURAL HISTORY SURVEY, MADISON, WISCONSIN 53706  
A FOLDER DESCRIBING TOPOGRAPHIC MAPS AND SYMBOLS IS AVAILABLE ON REQUEST

ROAD CLASSIFICATION

Primary highway, hard surface	Light-duty road, hard or improved surface
Secondary highway, hard surface	Unimproved road
Interstate Route	U. S. Route
	State Route



PINE LAKE, WIS.-MICH.  
SW/4 IRONWOOD 15' QUADRANGLE  
N4615-W9007.5/7.5

USGS  
Historical File  
Topographic Division

1973

AMS 2976 1 SW-SERIES V861

FEB 28 1977