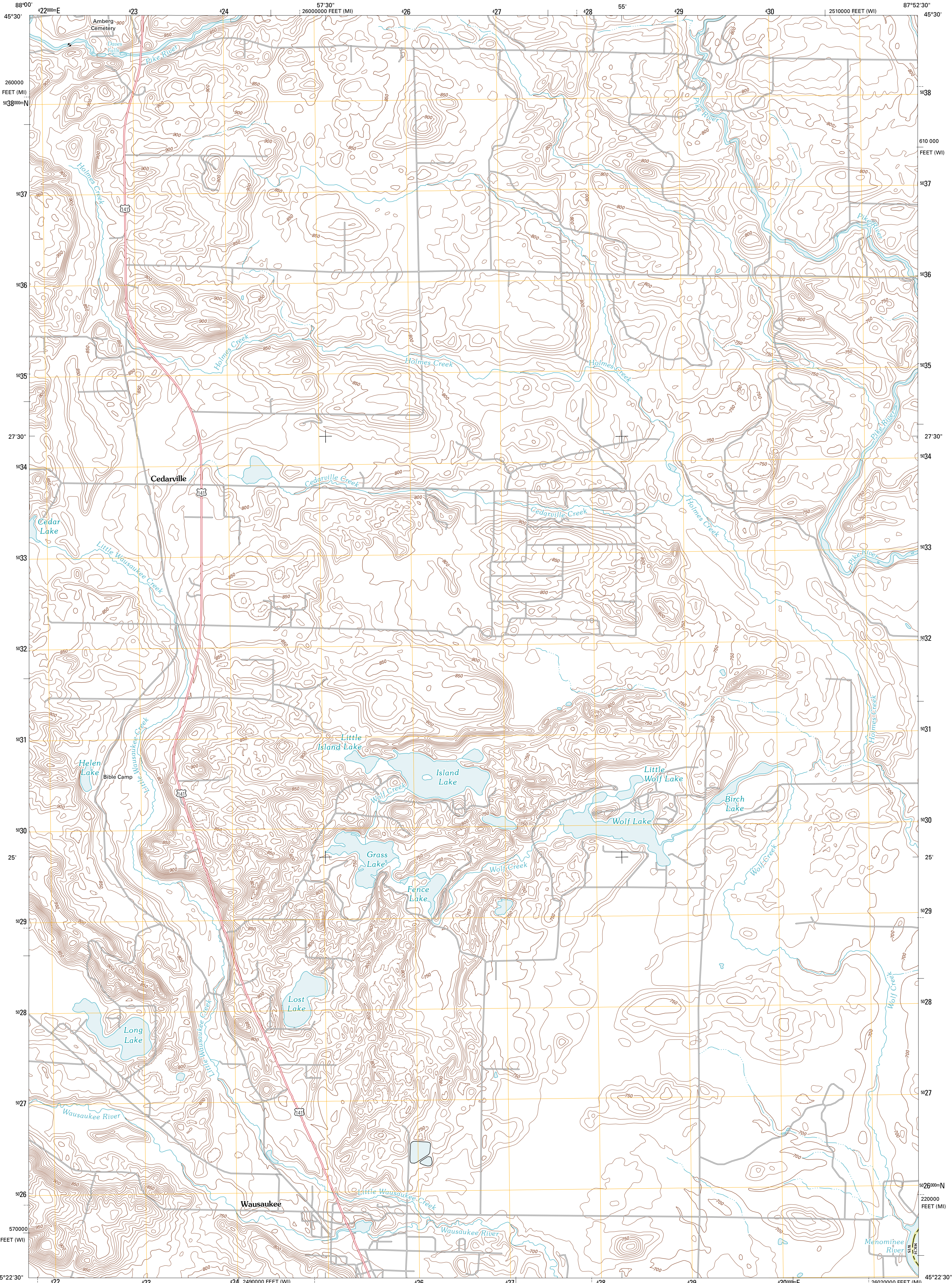




U.S. DEPARTMENT OF THE INTERIOR
U. S. GEOLOGICAL SURVEY

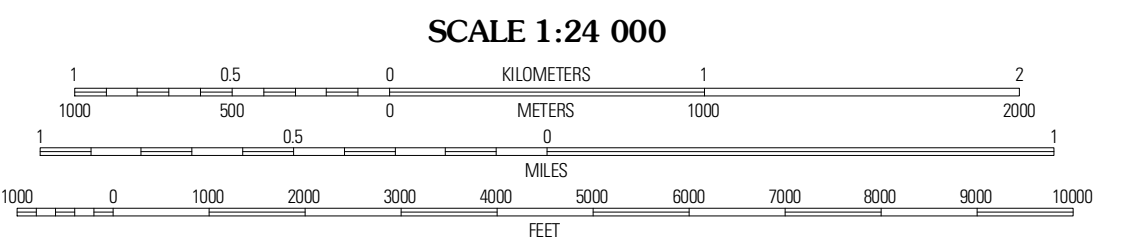
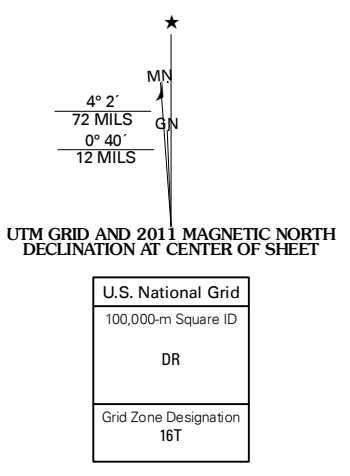


WAUSAUKEE NORTH QUADRANGLE
WISCONSIN-MICHIGAN
7.5-MINUTE SERIES



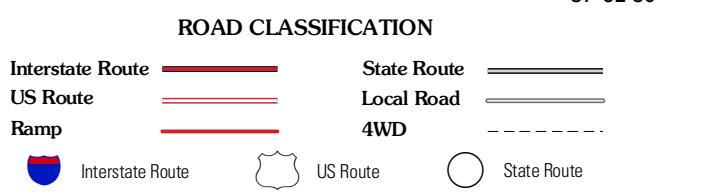
Produced by the United States Geological Survey
North American Datum of 1983 (NAD83)
World Geodetic System of 1984 (WGS84). Projection and
1 000-meter grid: Universal Transverse Mercator, Zone 16T
10 000-foot ticks: Wisconsin Coordinate System of 1983
(central zone), Michigan Coordinate System of 1983 (north
zone)

Imagery.....NAIP, July 2008
Roads.....©2006-2010 Tele Atlas
Names.....©2006-2010 Tele Atlas
Hydrography.....National Hydrography Dataset, 2008
Contours.....National Elevation Dataset, 1998
Boundaries.....Census, IBWC, IBC, USGS, 1972 - 2010



QUADRANGLE LOCATION

| | | |
|------------------------|--------------------|-------------------|
| Town Corner Lake | Amberg | Miscano Island |
| Athelstane | Wausaukee North | Resort Lake |
| Mount Tom | Wausaukee South | Bear Point |



CONTOUR INTERVAL 10 FEET
NORTH AMERICAN VERTICAL DATUM OF 1988

This map was produced to conform with version 0.5.10
of the USGS US Topo Product Standard.
A metadata file associated with this product is draft version 0.5.16

WAUSAUKEE NORTH, WI-MI
2011

ADJOINING 7.5 QUADRANGLES