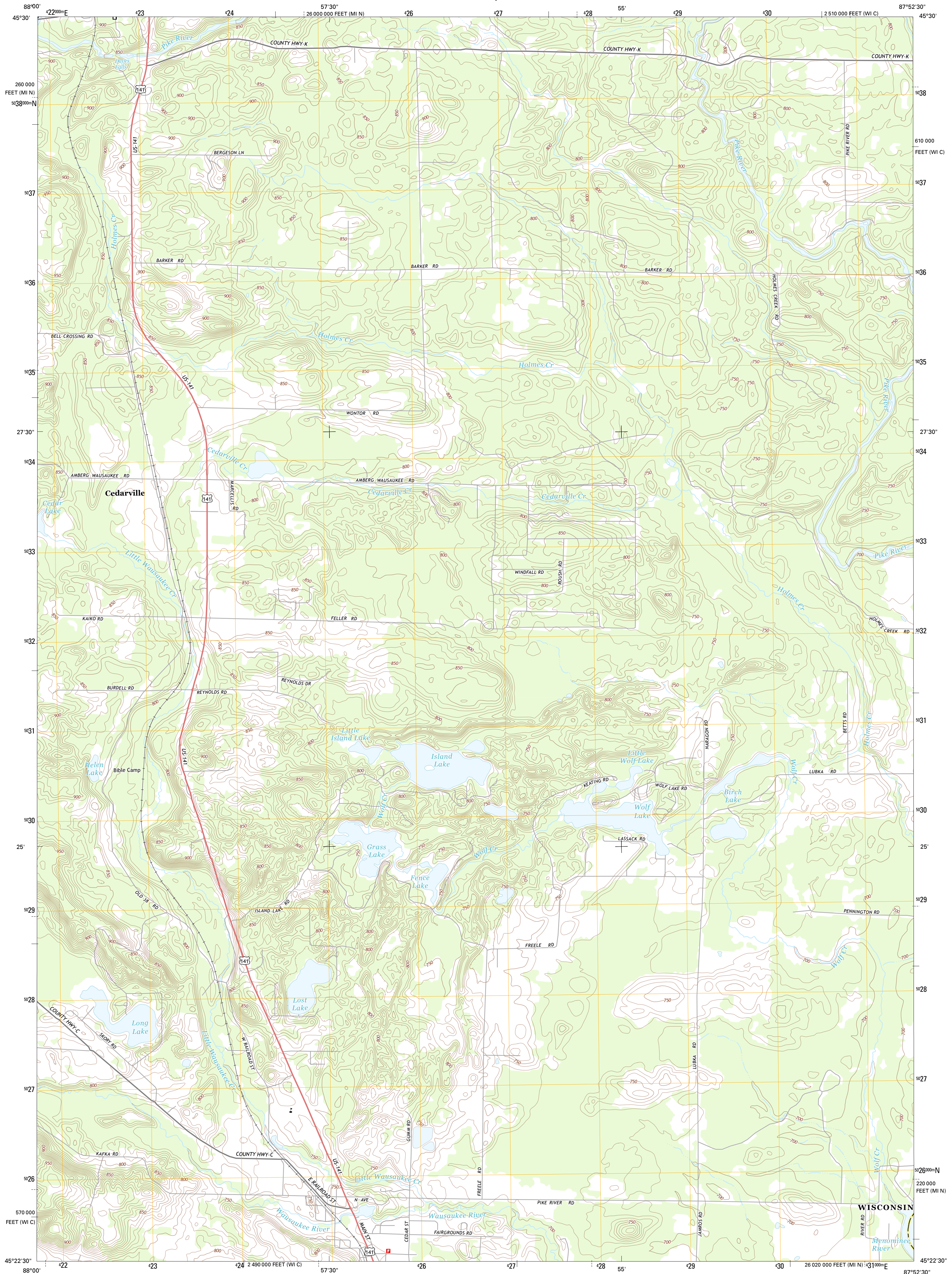




U.S. DEPARTMENT OF THE INTERIOR
U. S. GEOLOGICAL SURVEY



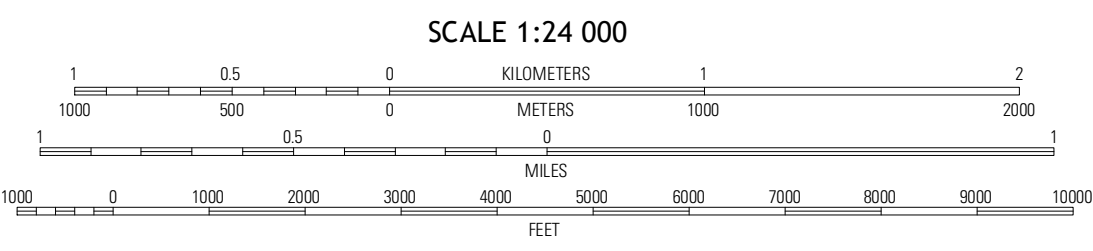
WAUSAUKEE NORTH QUADRANGLE
WISCONSIN-MICHIGAN
7.5-MINUTE SERIES



Produced by the United States Geological Survey
North American Datum of 1983 (NAD83)
World Geodetic System of 1984 (WGS84), Projection and
1 000-meter grid: Universal Transverse Mercator, Zone 16T
10 000-foot ticks: Wisconsin Coordinate System of 1983 (central zone), Michigan Coordinate System of 1983 (north zone)

Imagery.....NAIP, July 2010
Roads.....©2006-2012 TomTom
Names.....GNS, 2013
Hydrography.....National Hydrography Dataset, 2010
Contours.....National Elevation Dataset, 1998
Boundaries.....Census, IBWC, USGS, 1972-2012

UTM GRID AND 2013 MAGNETIC NORTH DECLINATION AT CENTER OF SHEET
U.S. National Grid
100,000 m Square ID
DR
Grid Zone Designation
16T



CONTOUR INTERVAL 10 FEET
NORTH AMERICAN VERTICAL DATUM OF 1988
This map was produced to conform with the National Geospatial Program US Topo Product Standard, 2011. A metadata file associated with this product is draft version 0.6.12



QUADRANGLE LOCATION

Town Center Lake	Amberg	Miscano Island
Albistane	Wausaukee North	Resort Lake
Mount Tom	Wausaukee South	Bear Point

ADJOINING 7.5 QUADRANGLES

ROAD CLASSIFICATION
Expressway
Secondary Hwy
Ramp
Interstate Route
Local Connector
Local Road
4WD
US Route
State Route

WAUSAUKEE NORTH, WI-MI
2013