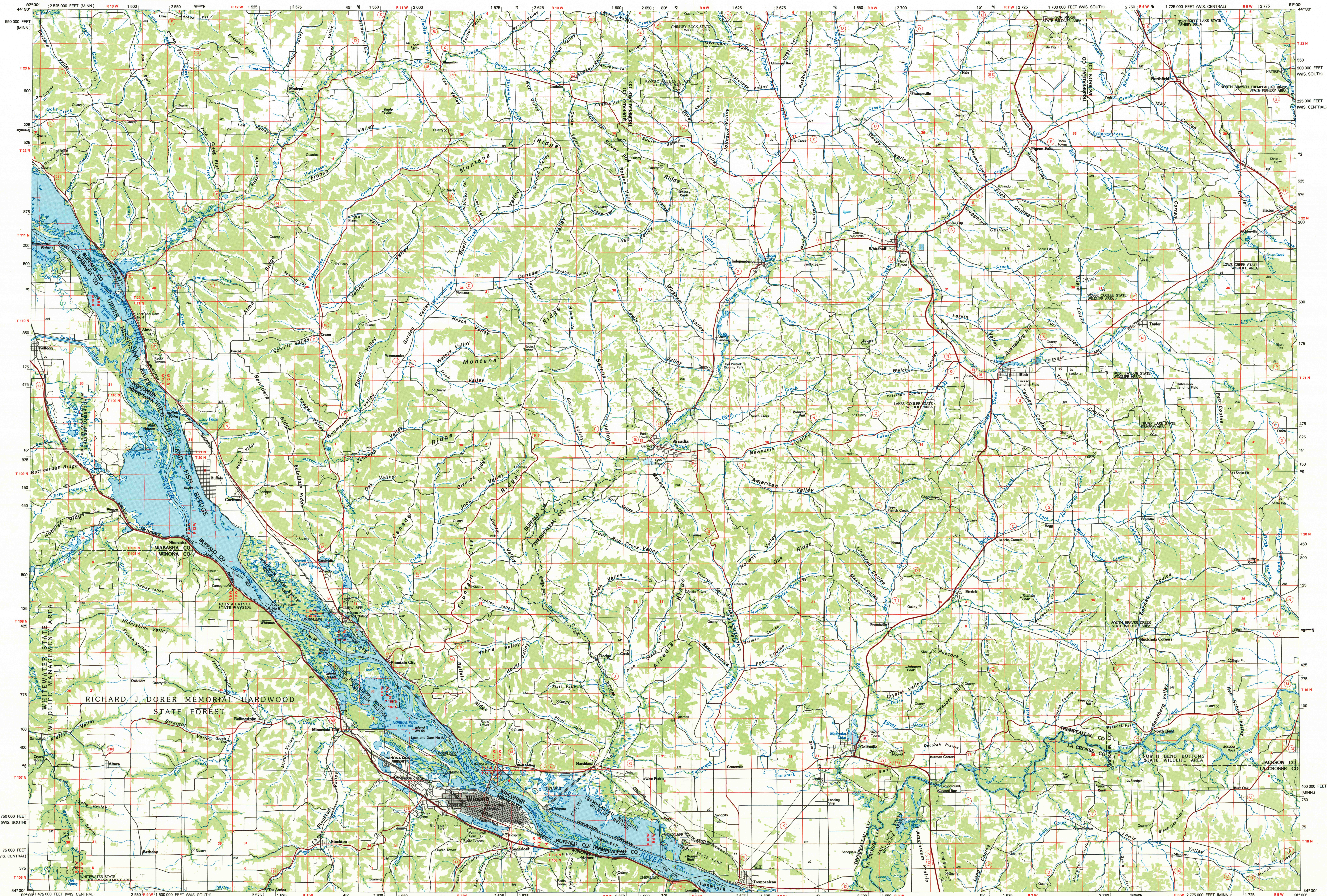


## WINONA, MINNESOTA-WISCONSIN

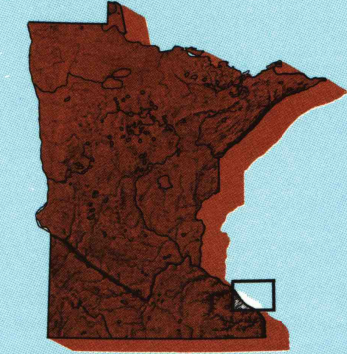
30 X 60 MINUTE SERIES (PLANIMETRIC)



# Winona

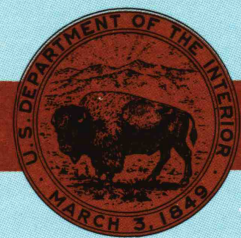
## MINNESOTA-WISCONSIN

1:100 000-scale  
planimetric map



30 X 60 MINUTE QUADRANGLE  
SHOWING

- Elevations in meters
- Highways, roads and other manmade structures
- Water features
- Woodland areas
- Geographic names




GEOLOGICAL SURVEY

1985 / 85

Produced by the United States Geological Survey  
Compiled from USGS 1:24 000 and 1:62 500-scale topographic maps dated 1968-1974. Planimetry revised from aerial photographs taken 1981 and other source data. Revised information not field checked. Map edited 1985.  
Projection and 10 000-meter grid, zone 15, Universal Transverse Mercator  
25 000-foot grid ticks based on Wisconsin coordinate system, central and south zones and Minnesota coordinate system, south zone. 1927 North American Datum  
To place on the predicted North American Datum 1983, move the projection lines 7 meters north and 13 meters east  
There may be private inholdings within the boundaries of the National or State reservations shown on this map

NATIONAL GEODETIC VERTICAL DATUM OF 1929  
ELEVATIONS SHOWN TO THE NEAREST METER

THIS MAP COMPLIES WITH NATIONAL MAP ACCURACY STANDARDS

CONVERSION TABLE		DECLINATION DIAGRAM	ADJOINING MAPS			
Meters	Feet		1	2	3	
1	3.2808		1	2	3	
2	6.5617		4	5		
3	9.8425					
4	13.1234					
5	16.4042					
6	19.6850					
7	22.9658					
8	26.2467					
9	29.5275					
10	32.8084					
To convert meters to feet multiply by 3.2808		UTM grid convergence (GM) and 1983 magnetic declination (MN) at center of map Diagram is approximate	1 Hastings 2 Eau Claire 3 Marshall 4 Rochester 5 Black River Falls 6 Austin 7 La Crosse 8 Sparta			
To convert feet to meters multiply by 0.3048						

FOR SALE BY U. S. GEOLOGICAL SURVEY  
RESTON, VIRGINIA 22092

### Topographic Map Symbols

Primary highway, hard surface.....	
Secondary highway, hard surface.....	
Light duty road, principal street, hard or improved surface.....	
Other road or street, trail.....	
Route marker, interstate, U.S., State.....	
Railroad: standard gage, narrow gage.....	
Bridge; overpass, underpass.....	
Tunnel: road, railroad.....	
Built up area, locality, elevation.....	
Airport: landing field; landing strip.....	
National boundary.....	
State boundary.....	
County boundary.....	
National or State reservation boundary.....	
Land grant boundary.....	
U.S. public lands survey: range, township, section.....	
Range, township, section line constructed.....	
Power transmission line; pipeline.....	
Dam; dam with lock.....	
Cemetery; building.....	
Windmill; water well; spring.....	
Mine shaft; adit or cave; mine, quarry; gravel pit.....	
Cenotaph; picnic area; U.S. location monument.....	
Rail; cliff dwelling.....	
Disrupted surface: strip mine, lava, sand.....	
Contours: index, intermediate; supplementary.....	
Bathymetric contours: index, intermediate.....	
Stream, lake: perennial, intermittent.....	
Rapids, large and small; falls, large and small.....	
Area to be submerged; maps, levees.....	
Land subject to controlled inundation; woodland.....	
Scrub; mangrove.....	
Orchard; vineyard.....	

A pamphlet describing topographic maps is available on request

WINONA, MINNESOTA-WISCONSIN  
44091-A1-PL-100

1985