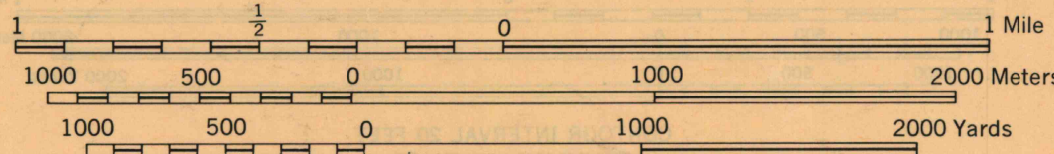


Scale 1:25,000 (Approximate)



PRINTED BY ARMY MAP SERVICE, CORPS OF ENGINEERS, 5-51, 701714

AMS V072A
First Edition-AMS

Prepared by the Army Map Service (SA), Corps of Engineers,
U. S. Army, Washington, D. C., 1951. Mosaic controlled by
best average ft. to Minnesota, 1:25,000, AMS, Sheet
7075 I NE, 1948. Aerial Photography May, June, July 1947.

HEIGHTS IN FEET

TRANSVERSE MERCATOR PROJECTION
DATUM IS 1929 MEAN SEA LEVEL

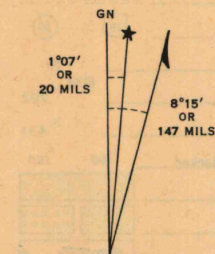
ONE THOUSAND METER UNIVERSAL TRANSVERSE MERCATOR GRID, ZONE 15

TICKS INSIDE THE HEATLINE INDICATE THE
1,000 YARD U. S. POLYCONIC GRID, ZONE D

THE LAST THREE DIGITS OF THE GRID NUMBERS ARE OMITTED

USERS NOTING ERRORS OR OMISSIONS ON THIS MAP ARE URGED TO MARK HEREON AND FORWARD DIRECTLY TO COMMANDING
OFFICER, ARMY MAP SERVICE, WASHINGTON, D. C. MAPS SO FORWARDED WILL BE RETURNED OR REPLACED IF DESIRED.

GRID ZONE DESIGNATION: 15T		TO GIVE A STANDARD REFERENCE ON THIS SHEET TO NEAREST 100 METERS	
100,000 M. SQUARE IDENTIFICATION		SAMPLE POINT: SWANVILLE ST. PETER CEMETERY	
UA	1. Locate first VERTICAL grid line to LEFT of point and read LARGE figures labeling the line either in the top or bottom margin, or on the line itself: Estimate tenths from grid line to point:		78 4
	2. Locate first HORIZONTAL grid line BELOW point and read LARGE figures labeling the line either in the left or right margin, or on the line itself: Estimate tenths from grid line to point:		87 7
	IGNORE THE SMALLER figures of any grid number; these are for finding the full coordinates. Use ONLY the LARGER figures of the grid number; example: 5082200		784877
	SAMPLE REFERENCE: If reporting beyond 100,000 meters or if sheet has an overlapping grid, prefix 100,000 Meter Square Identification, as: UA784877 If reporting beyond 18" in any direction, prefix Grid Zone Designation as: 15TUA784877		15TUA784877



APPROXIMATE MEAN DECLINATION 1951
FOR CENTER OF SHEET
ANNUAL MAGNETIC CHANGE 2" WESTERLY

Use diagram only to obtain numerical values.
To determine magnetic north line, connect the
pivot point "P" on the south edge of the map
with the value of the angle between GRID
NORTH and MAGNETIC NORTH, as plotted on
the degree scale at the north edge of the map.

INDEX TO ADJOINING SHEETS

CORNER SW 7075 I SW	CORNER E 7075 I E	CORNER NE 7075 I NE
CORNER SW 7075 I SW	CORNER E 7075 I E	CORNER NE 7075 I NE
CORNER SW 7075 I SW	CORNER E 7075 I E	CORNER NE 7075 I NE

FLensburg, MINNESOTA
CAMP RIPLEY AND VICINITY