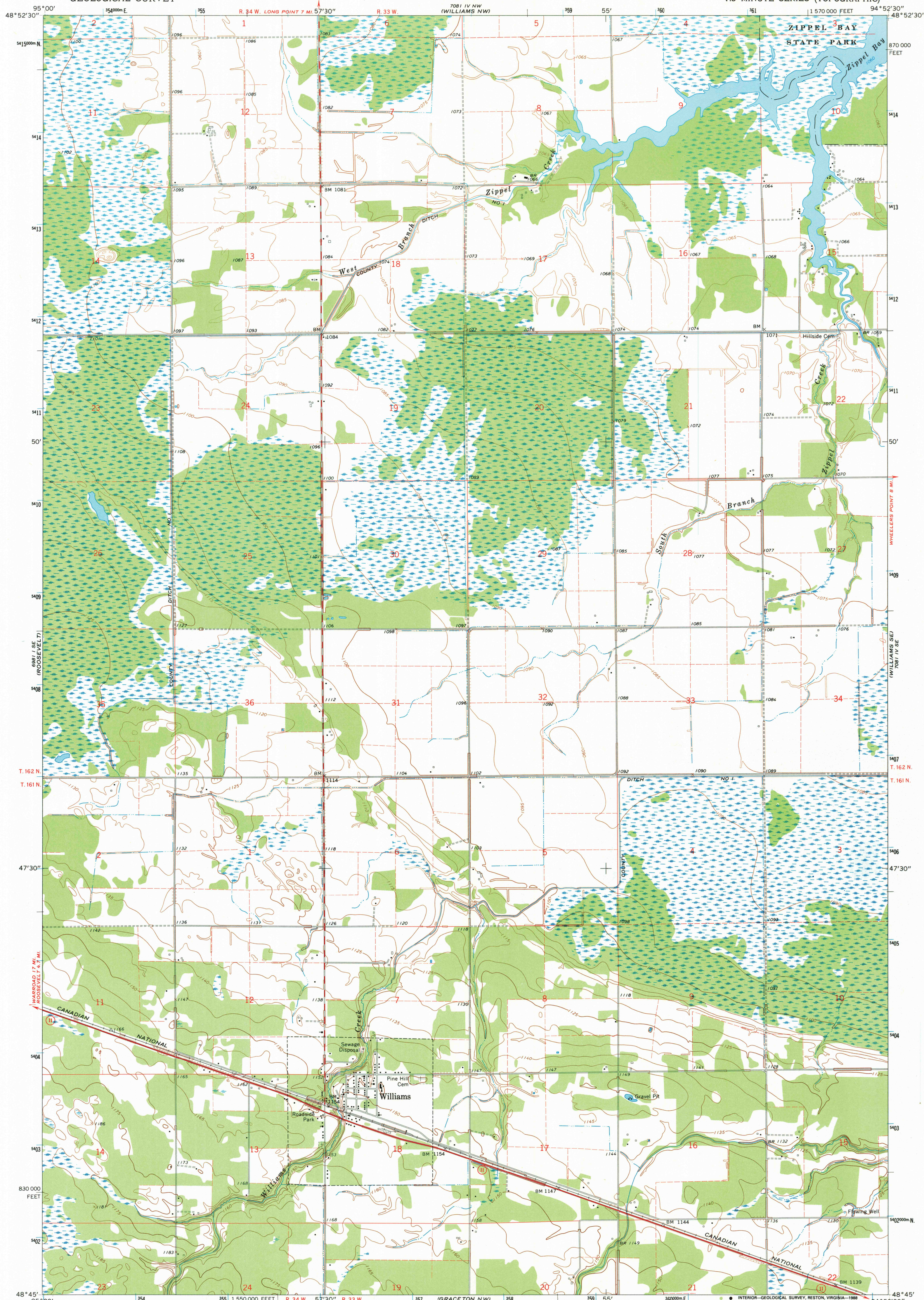


UNITED STATES
DEPARTMENT OF THE INTERIOR
GEOLOGICAL SURVEY

STATE OF MINNESOTA
DEPARTMENT OF ADMINISTRATION

WILLIAMS QUADRANGLE
MINNESOTA-LAKE OF THE WOODS CO.
7.5 MINUTE SERIES (TOPOGRAPHIC)



Mapped, edited, and published by the Geological Survey

Control by USGS and USC&GS

Planimetry by photogrammetric methods from aerial photographs taken 1965. Topography by planetable surveys 1967

Polyconic projection. 1927 North American datum

10,000 foot grid based on Minnesota coordinate system, north zone

1000-meter Universal Transverse Mercator grid ticks, zone 15, shown in blue

Fine red dashed lines indicate selected fence and field lines where generally visible on aerial photographs

This information is unchecked

To place on the predicted North American Datum 1983, move the projection lines 5 meters north and 17 meters east as shown by dashed corner ticks

SCALE 1:24 000

CONTOUR INTERVAL 5 FEET

NATIONAL GEODETIC VERTICAL DATUM OF 1929

ROAD CLASSIFICATION

Heavy-duty ——— Light-duty ———

Medium-duty ——— Unimproved dirt ———

State Route

THIS MAP COMPLIES WITH NATIONAL MAP ACCURACY STANDARDS

FOR SALE BY U. S. GEOLOGICAL SURVEY

DENVER, COLORADO 80225, OR RESTON, VIRGINIA 22092

A FOLDER DESCRIBING TOPOGRAPHIC MAPS AND SYMBOLS IS AVAILABLE ON REQUEST

WILLIAMS, MINN.

48094-G8-TF-024

1967

DMA 7081 IV SW-SERIES V872

USGS NMD HISTORICAL MAP

APR 19 1988

REC'D FILE COPY