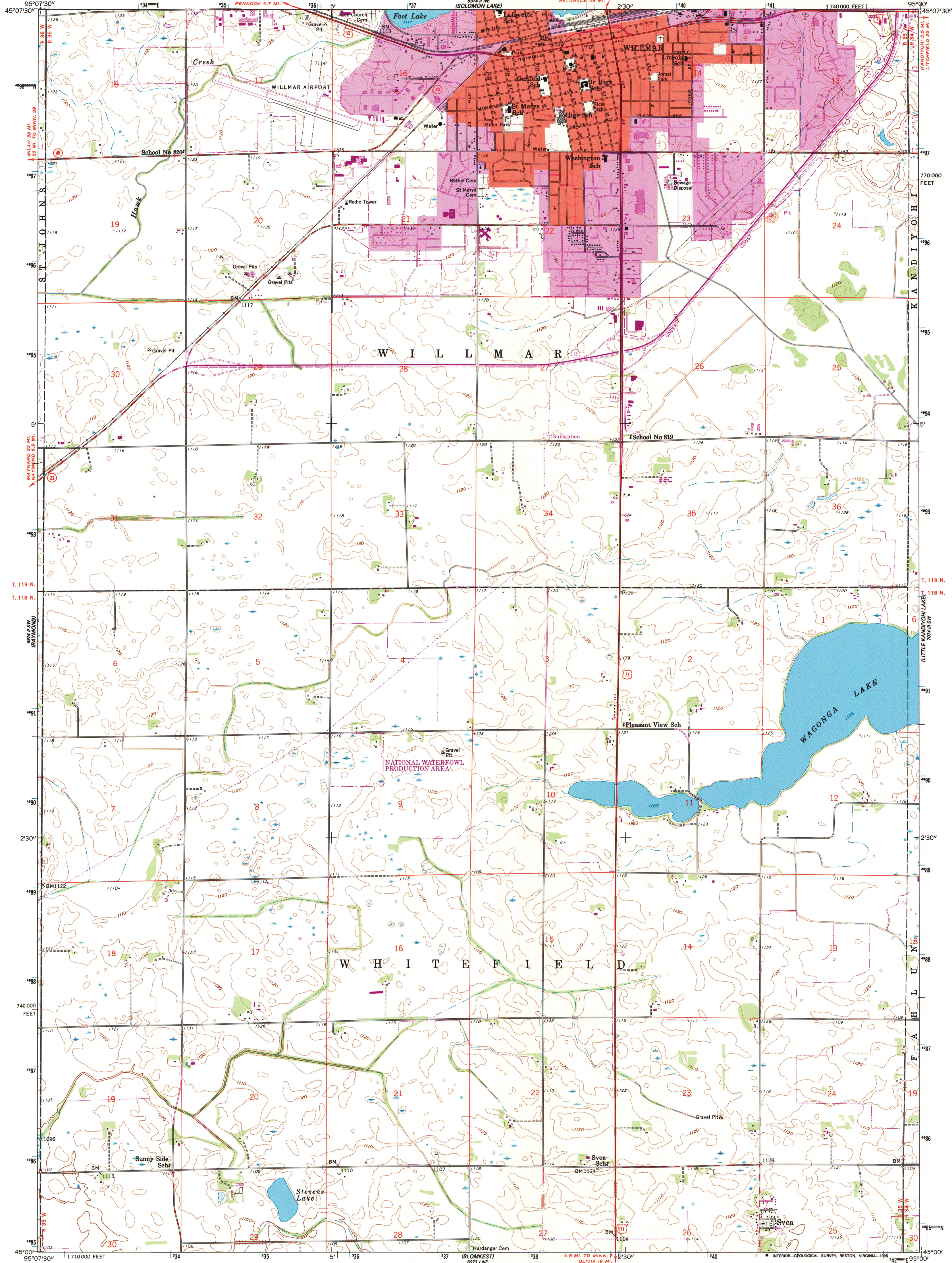


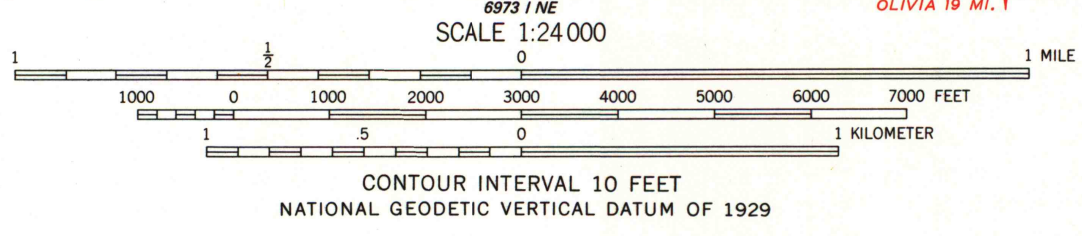
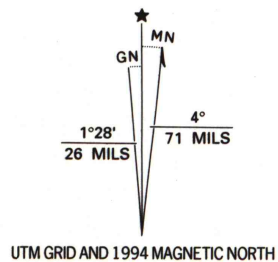
UNITED STATES
DEPARTMENT OF THE INTERIOR
GEOLOGICAL SURVEY

STATE OF MINNESOTA
DEPARTMENT OF ADMINISTRATION

WILLMAR QUADRANGLE
MINNESOTA-KANDIYOHI CO.
7.5 MINUTE SERIES (TOPOGRAPHIC)



Produced by the United States Geological Survey
Control by USGS, NOS/NOAA and Minnesota State Highway Department
Topography by photogrammetric methods from aerial photographs
taken 1956-57. Field checked 1958
North American Datum of 1927 (NAD 27). Projection and
10 000-foot ticks: Minnesota coordinate system, south zone
(Lambert conformal conic)
Blue 1000-meter Universal Transverse Mercator ticks, zone 15
North American Datum of 1983 (NAD 83) is shown by dashed
corner ticks. The values of the shift between NAD 27 and NAD 83
for 7.5-minute intersections are obtainable from National Geodetic
Survey NADCON software
There may be private inholdings within the boundaries of the
National or State reservations shown on this map
Red tint indicates areas in which only landmark buildings are shown
Fine red dashed lines indicate selected fence and field lines where
generally visible on aerial photographs. This information is unchecked



| ROAD CLASSIFICATION | |
|------------------------------------|--|
| Primary highway, hard surface | Light-duty road, hard or improved surface |
| Secondary highway, hard surface | Unimproved road |
| Interstate Route | U. S. Route |
| | State Route |

Revisions shown in purple and woodland compiled in
cooperation with State of Minnesota agencies from
aerial photographs taken 1991 and other sources.
This information not field checked. Map edited 1994
Information shown in purple may not meet USGS content
standards and may conflict with previously mapped contours
Purple tint indicates extension of urban areas

WILLMAR, MINN.
45095-A1-TF-024
1958
REVISED 1994
DMA 6974 II SE-SERIES V872

A.H. ROBINSON
MAP LIBRARY
JUN 25 1995
University of Wisconsin
Madison
U.S. Regional
Depository Copy
DO NOT DISCARD