

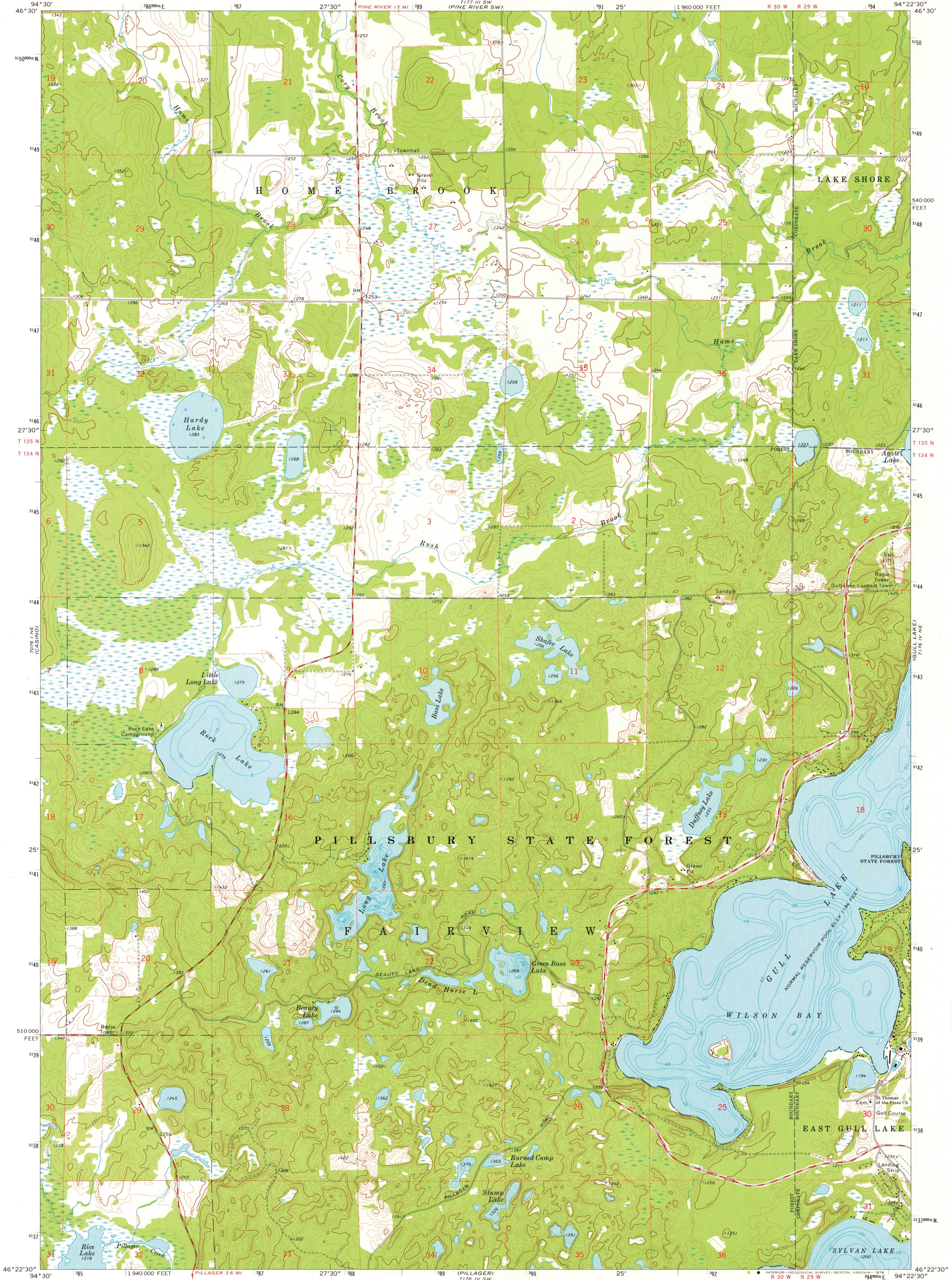
7171 15 SE
1064 15 SE

UNITED STATES
DEPARTMENT OF THE INTERIOR
GEOLOGICAL SURVEY

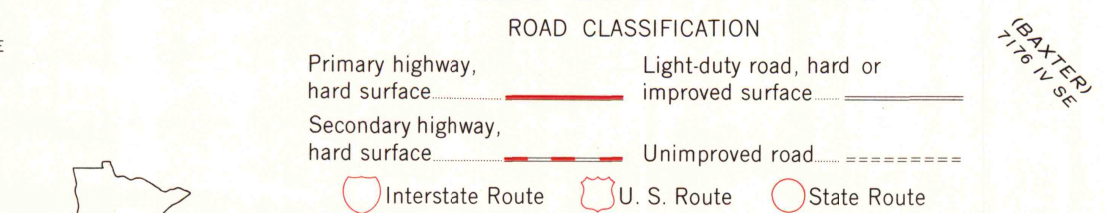
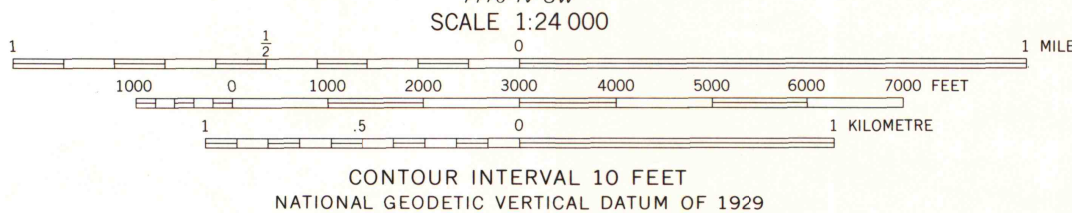
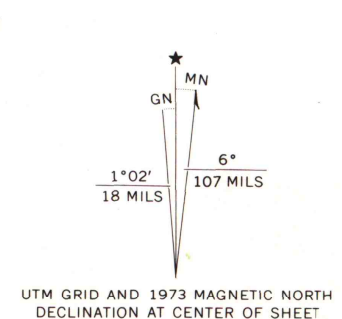
STATE OF MINNESOTA
DEPARTMENT OF ADMINISTRATION

WILSON BAY QUADRANGLE
MINNESOTA—CASS CO.
7.5 MINUTE SERIES (TOPOGRAPHIC)
NW 1/4 PILLAGER 15' QUADRANGLE

7171 15 SE
1064 15 SE



Mapped, edited, and published by the Geological Survey
Control by USGS and NOS/NOAA
Topography by photogrammetric methods from aerial
photographs taken 1973. Field checked 1973
Hydrography compiled from information furnished by
Minnesota Department of Natural Resources
Projection and 10,000-foot grid ticks; Minnesota coordinate
system, central zone (Lambert conformal conic)
1000-metre Universal Transverse Mercator grid ticks,
zone 15, shown in blue. 1927 North American datum
Fine red dashed lines indicate selected fence and field lines
where generally visible on aerial photographs
This information is unchecked



WILSON BAY, MINN.
NW 1/4 PILLAGER 15' QUADRANGLE
N4622.5—W9422.5/7.5

1973
AMS 7176 IV NW—SERIES V872

MAP AND AERIAL PHOTO
APR 24 1976
University of Wisconsin