

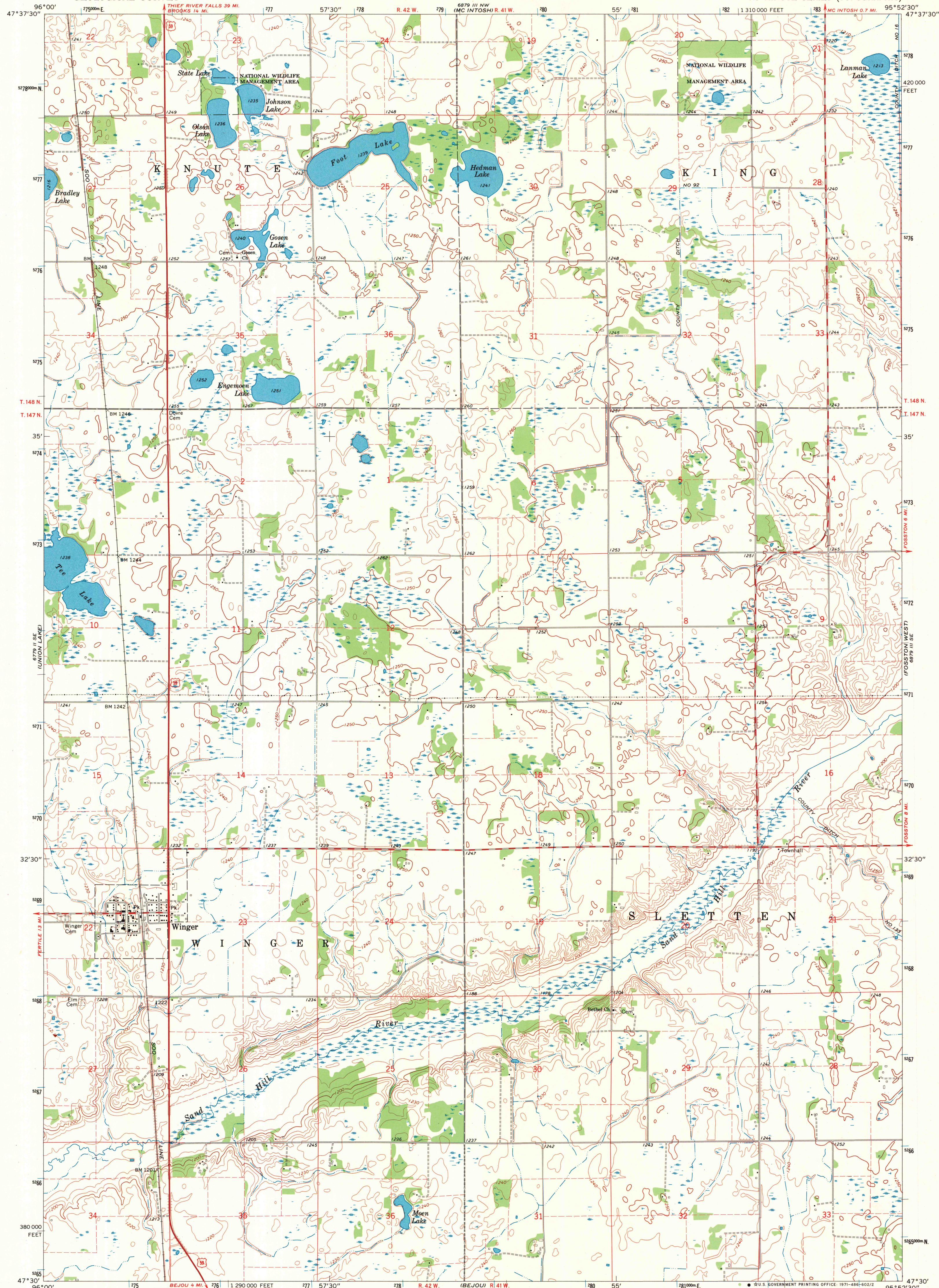
679 III SE
(ERSKINE)

UNITED STATES
DEPARTMENT OF THE INTERIOR
GEOLOGICAL SURVEY

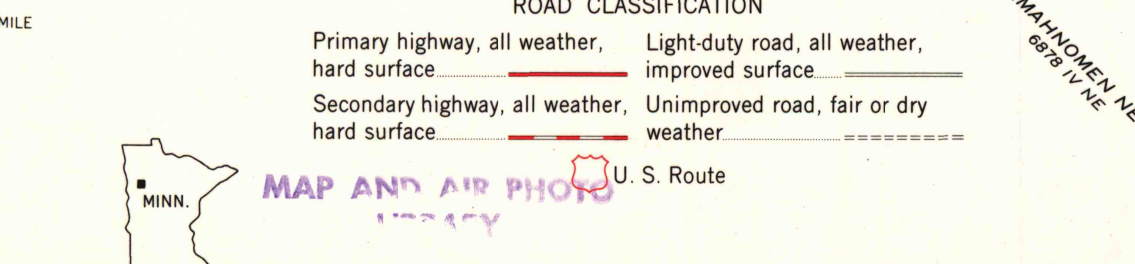
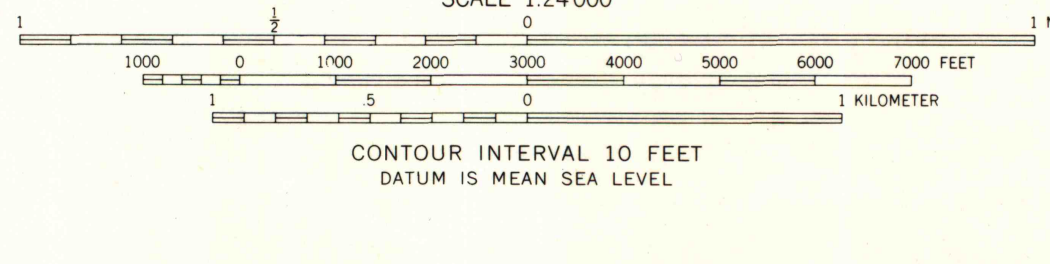
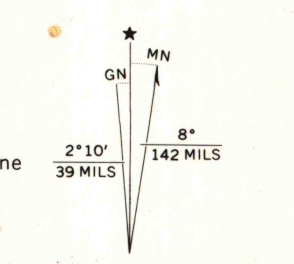
STATE OF MINNESOTA
DEPARTMENT OF ADMINISTRATION

WINGER QUADRANGLE
MINNESOTA—POLK CO.
7.5 MINUTE SERIES (TOPOGRAPHIC)

679 III NE
(MCINTOSH NE)



Mapped, edited, and published by the Geological Survey
Control by USGS and USC&GS
Topography by photogrammetric methods from aerial
photographs taken 1966. Field checked 1969
Polyconic projection. 1927 North American datum
10,000-foot grid based on Minnesota coordinate system, north zone
1000-meter Universal Transverse Mercator grid ticks,
zone 15, shown in blue
Fine red dashed lines indicate selected fence and field lines
where generally visible on aerial photographs
This information is unchecked



MAP AND AIR PHOTO
MAR 31 1972
WINGER, MINN.
N4730—W9552.5/7.5
1969
AMS 6879 III SW—SERIES V872

THIS MAP COMPLIES WITH NATIONAL MAP ACCURACY STANDARDS
FOR SALE BY U.S. GEOLOGICAL SURVEY, DENVER, COLORADO 80225, OR WASHINGTON, D. C. 20242
A FOLDER DESCRIBING TOPOGRAPHIC MAPS AND SYMBOLS IS AVAILABLE ON REQUEST