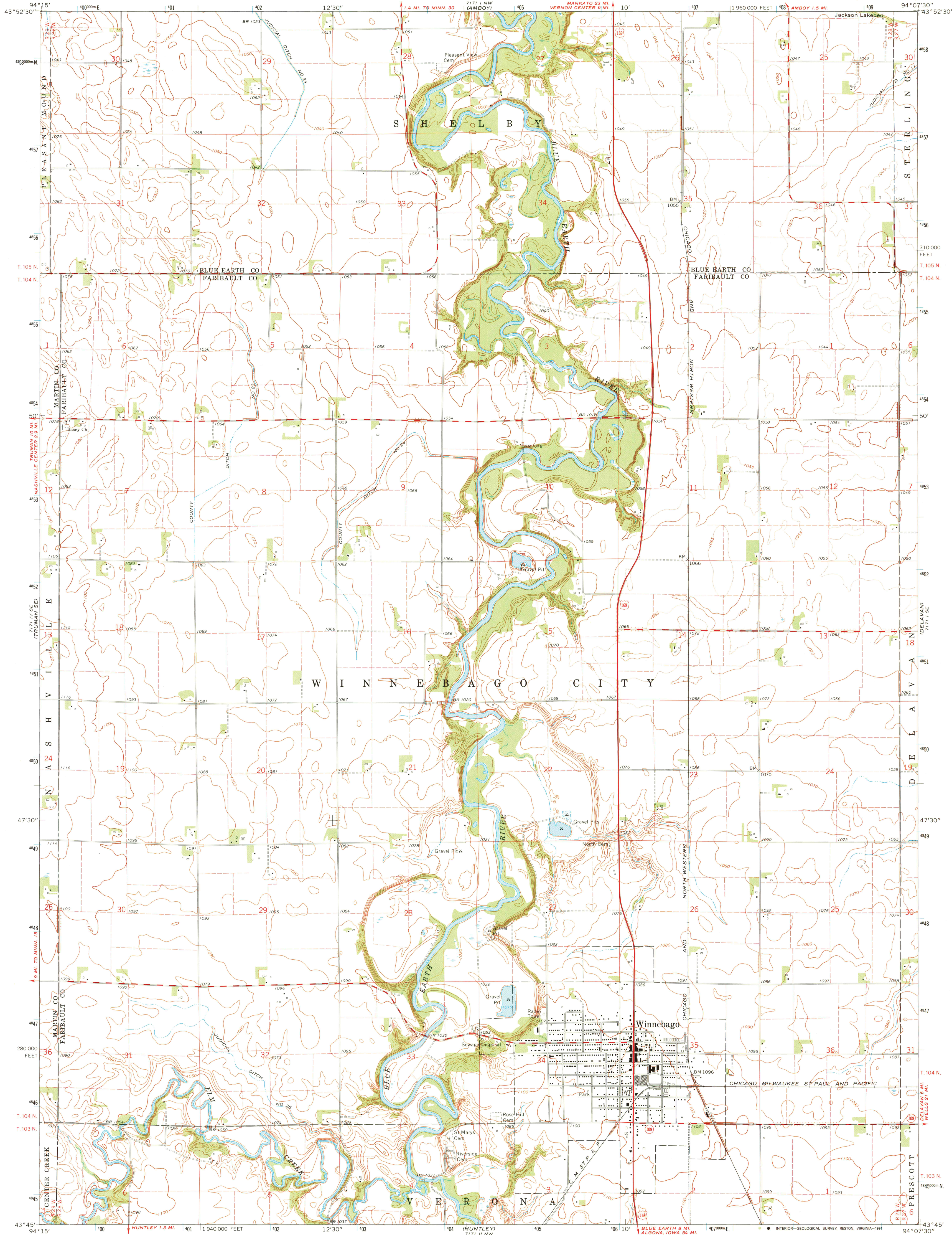


UNITED STATES
DEPARTMENT OF THE INTERIOR
GEOLOGICAL SURVEY

STATE OF MINNESOTA
DEPARTMENT OF ADMINISTRATION

WINNEBAGO QUADRANGLE
MINNESOTA
7.5 MINUTE SERIES (TOPOGRAPHIC)



Mapped, edited, and published by the Geological Survey
Control by USGS and USC&GS

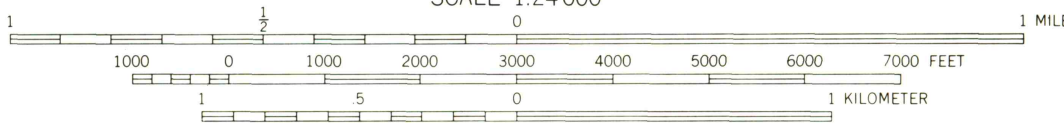
Topography by photogrammetric methods from aerial
photographs taken 1965. Field checked 1967

Polyconic projection. 1927 North American datum
10,000-foot grid based on Minnesota coordinate system, south zone
1000-meter Universal Transverse Mercator grid ticks,
zone 15, shown in blue

Fine red dashed lines indicate selected fence and field lines where
generally visible on aerial photographs
This information is unchecked

To place on the predicted North American Datum 1983
move the projection lines 6 meters north and
20 meters east as shown by dashed corner ticks

Map photoinspected 1977
No major culture or drainage changes observed



CONTOUR INTERVAL 10 FEET
DOTTED LINES REPRESENT 5-FOOT CONTOURS
NATIONAL GEODETIC VERTICAL DATUM OF 1929

THIS MAP COMPLIES WITH NATIONAL MAP ACCURACY STANDARDS
FOR SALE BY U.S. GEOLOGICAL SURVEY
DENVER, COLORADO 80225, OR RESTON, VIRGINIA 22092
A FOLDER DESCRIBING TOPOGRAPHIC MAPS AND SYMBOLS IS AVAILABLE ON REQUEST

ROAD CLASSIFICATION
Heavy-duty ——— Light-duty ———
Medium-duty ——— Unimproved dirt ———
U.S. Route ——— State Route ———



WINNEBAGO, MINN.
43094-G2-TF-024

1967
PHOTOINSPECTED 1977
DMA 7171 I SW—SERIES 1982

