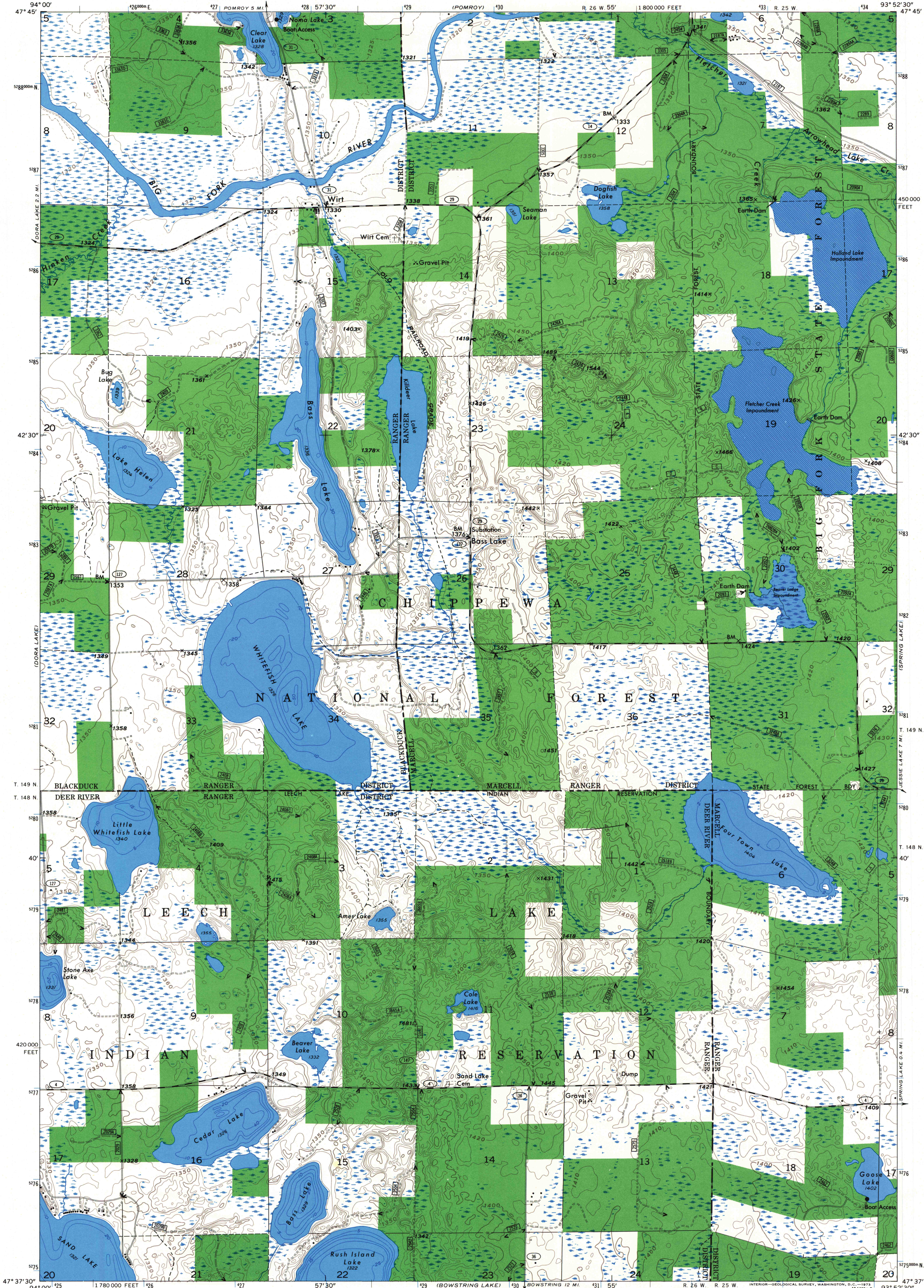


UNITED STATES
DEPARTMENT OF THE INTERIOR
GEOLOGICAL SURVEY
MODIFIED FOR USDA FOREST SERVICE USE

WIRT QUADRANGLE
MINNESOTA-ITASCA CO.
7.5 MINUTE SERIES (TOPOGRAPHIC)



Base map prepared by the U.S. Geological Survey
Control by USGS and USC&GS
Topography by photogrammetric methods from aerial
photographs taken 1969. Field checked 1970
Hydrography compiled from information furnished by
Minnesota Department of Conservation
Polyconic projection. 1927 North American datum
10,000-foot grid based on Minnesota coordinate system
north zone
1000-meter Universal Transverse Mercator grid ticks,
zone 15, shown in blue. 1927 North American datum
Modification to the USGS base map by the Geomatics
Service Center from 1981, 1984, and 1985 aerial photography
and 1987 correction guides furnished by the Eastern Region.

UTM GRID AND 1987
MAGNETIC NORTH
DECLINATION AT
CENTER OF SHEET

SCALE 1:24,000

CONTOUR INTERVAL 10 FEET
DASHED LINES REPRESENT 5-FOOT CONTOURS
DATUM IS MEAN SEA LEVEL

LEGEND

— National Forest Boundary	— Primary Highway	100 U.S. Highway
— National Forest Land as of 1987	— Secondary Highway	169 State Highway
TOWNSHIP AND SECTION LINE CLASSIFICATION	— Light Duty Road	488 County Highway
--- Surveyed, Location Reliable	--- Primitive Road	4055 Forest Road
--- Surveyed, Location Unreliable	--- Trail	2607 Forest Trail
--- Trail, Location Approximate	--- Road, Location Approximate	

QUADRANGLE LOCATION DIAGRAM
CHIPPEWA NATIONAL FOREST

Copies of this map are
available for purchase at:
Forest Supervisor's Office
Cass Lake, Minn. 56633

WIRT, MINN.
N4737.5—W9352.5/7.5
1970
DMA 7279 III NW—
U.S. GOVERNMENT PRINTING OFFICE: 1990-745-235

R10-23-90