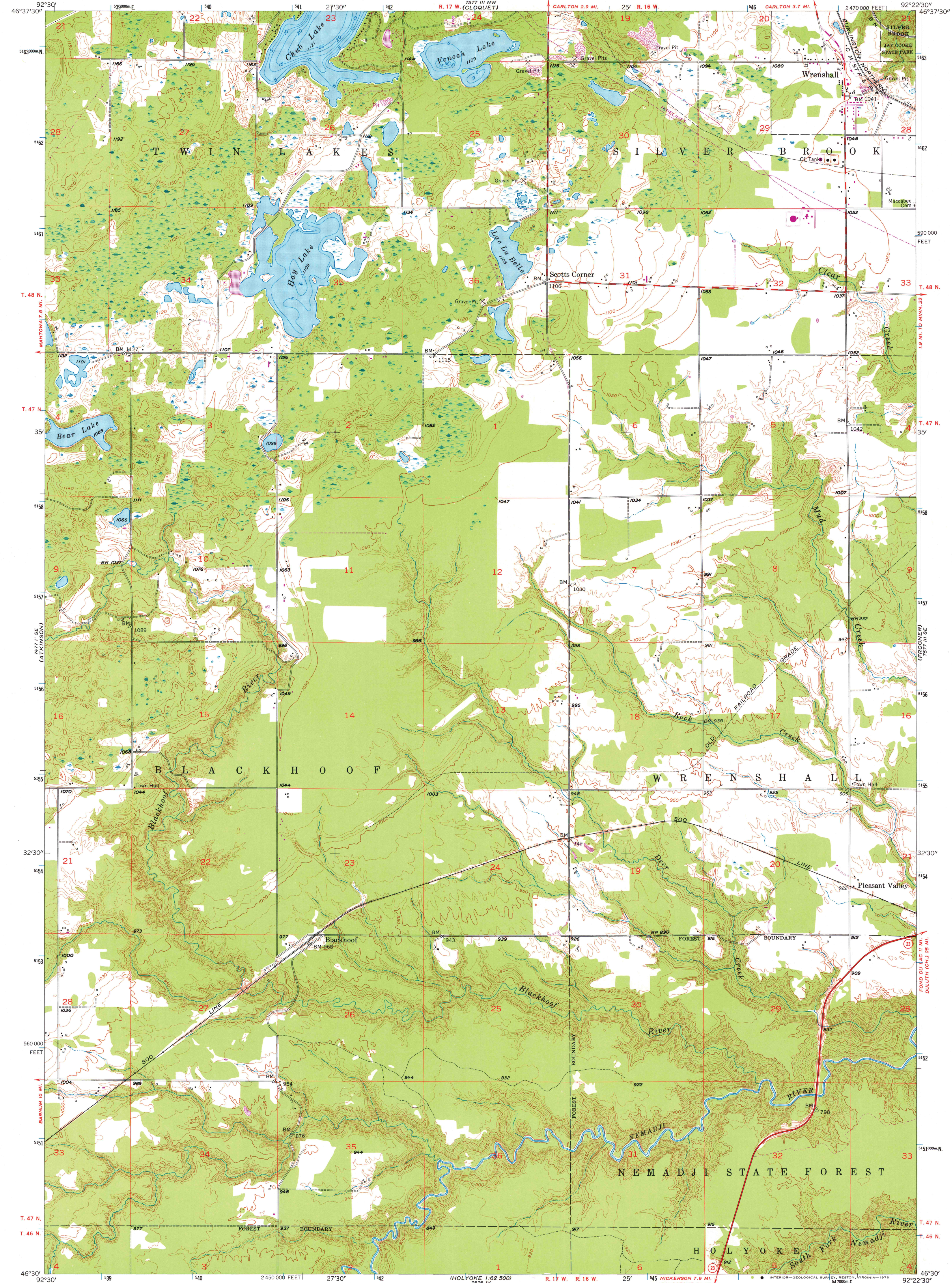


UNITED STATES
DEPARTMENT OF THE INTERIOR
GEOLOGICAL SURVEY

WRENSHALL QUADRANGLE
MINNESOTA—CARLTON CO.
7.5 MINUTE SERIES (TOPOGRAPHIC)



Mapped, edited, and published by the Geological Survey

Control by USGS and USC&GS

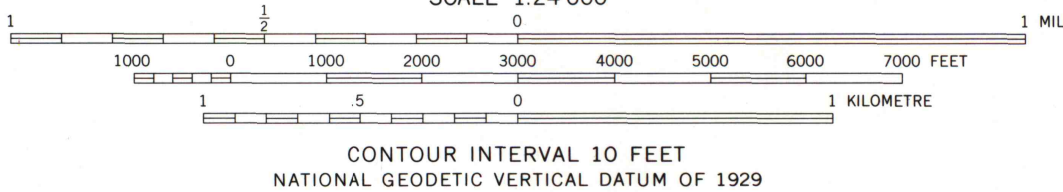
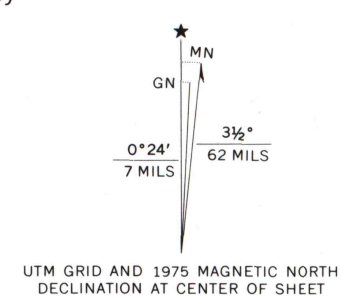
Topography from aerial photographs by Kelsh plotter
Aerial photographs taken 1952–1953. Field check 1954

Depth curves and soundings compiled from charts furnished
by Minnesota Department of Conservation

Polyconic projection. 1927 North American datum
10,000-foot grids based on Minnesota coordinate system,
central zone

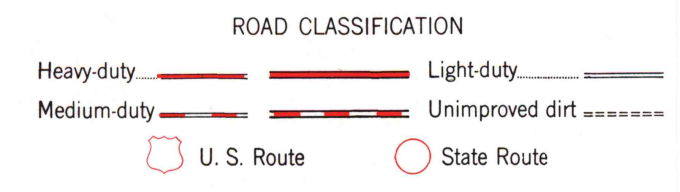
1000-metre Universal Transverse Mercator grid ticks,
zone 15, shown in blue

Revisions shown in purple compiled from aerial photographs
taken 1975. This information not field checked



NATIONAL GEODETIC VERTICAL DATUM OF 1929

THIS MAP COMPLIES WITH NATIONAL MAP ACCURACY STANDARDS
FOR SALE BY U.S. GEOLOGICAL SURVEY, RESTON, VIRGINIA 22092
A FOLDER DESCRIBING TOPOGRAPHIC MAPS AND SYMBOLS IS AVAILABLE ON REQUEST



WRENSHALL, MINN.

N 4630—W 9222.5/7.5

1954
PHOTOREVISED 1975
AMS 7577 III SW—SERIES V872

MAP AND AIR PHOTO
LIBRARY
JUN 3 1977

University of Wisconsin
Madison