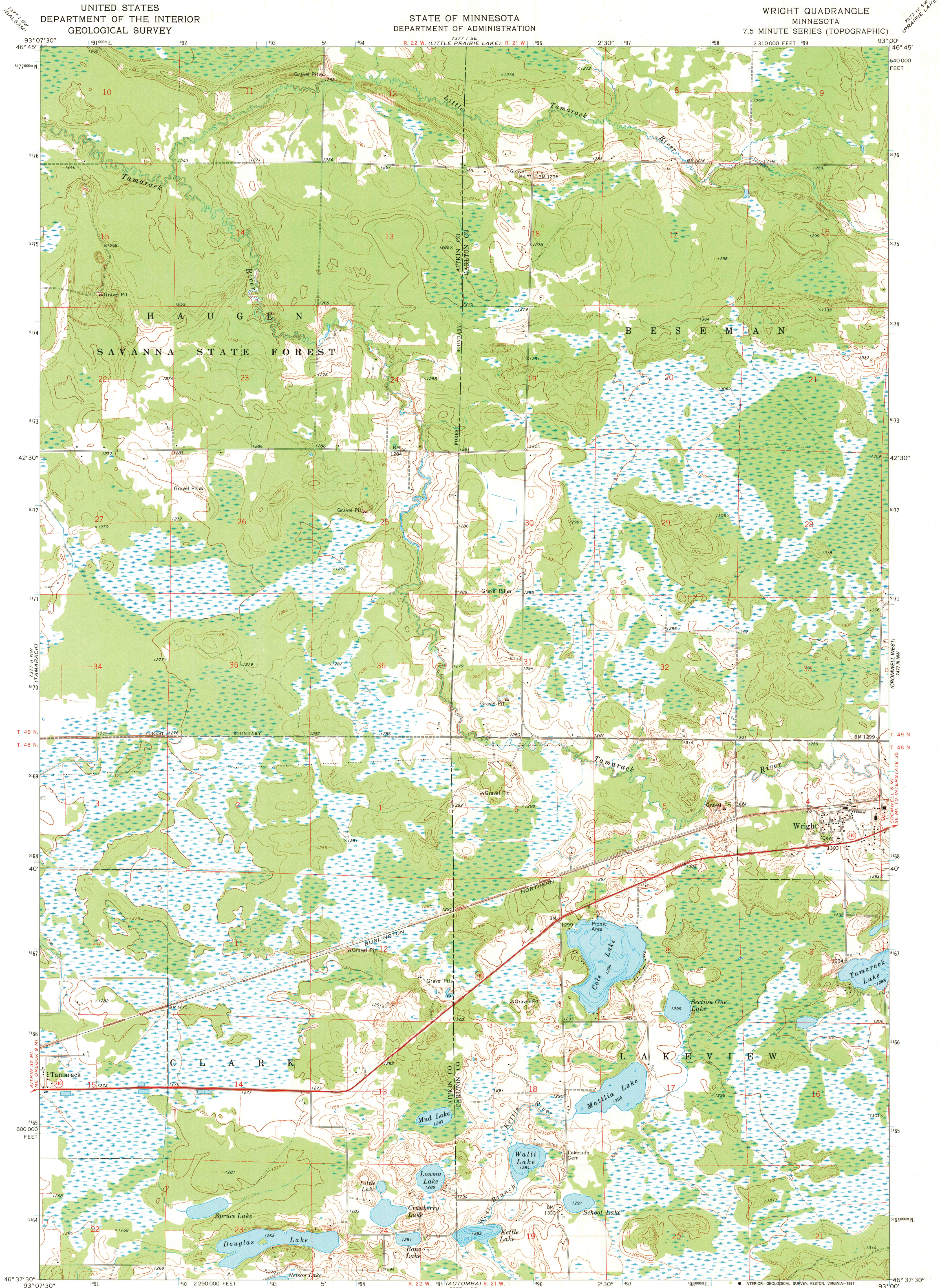


UNITED STATES  
DEPARTMENT OF THE INTERIOR  
GEOLOGICAL SURVEY

STATE OF MINNESOTA  
DEPARTMENT OF ADMINISTRATION

WRIGHT QUADRANGLE  
MINNESOTA  
7.5 MINUTE SERIES (TOPOGRAPHIC)



Mapped, edited, and published by the Geological Survey

Control by USGS and USC&GS

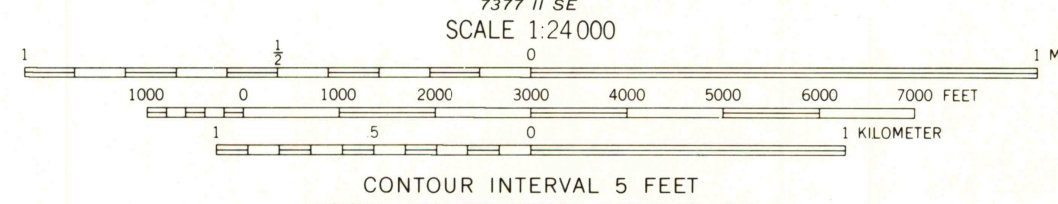
Topography by photogrammetric methods from aerial  
photographs taken 1966, 1968-69 and planetable surveys 1970

Hydrography compiled from information furnished by  
Minnesota Department of Conservation

Polyconic projection. 1927 North American datum  
10,000-foot grid based on Minnesota coordinate system, central zone  
1000-meter Universal Transverse Mercator grid ticks,  
zone 15, shown in blue

To place on the predicted North American Datum 1983  
move the projection lines 8 meters north and  
16 meters east as shown by dashed corner ticks

Map photoinspected 1980  
No major culture or drainage changes observed



THIS MAP COMPLIES WITH NATIONAL MAP ACCURACY STANDARDS  
FOR SALE BY U. S. GEOLOGICAL SURVEY  
DENVER, COLORADO 80225, OR RESTON, VIRGINIA 22092  
A FOLDER DESCRIBING TOPOGRAPHIC MAPS AND SYMBOLS IS AVAILABLE ON REQUEST



ROAD CLASSIFICATION  
Primary highway, all weather, Light-duty road, all weather,  
hard surface improved surface  
Unimproved road, fair or dry  
weather  
State Route

WRIGHT, MINN.  
46093F1-TF-024

1970  
PHOTOINSPECTED 1980  
DMA 7377 II NE - SERIES V872

