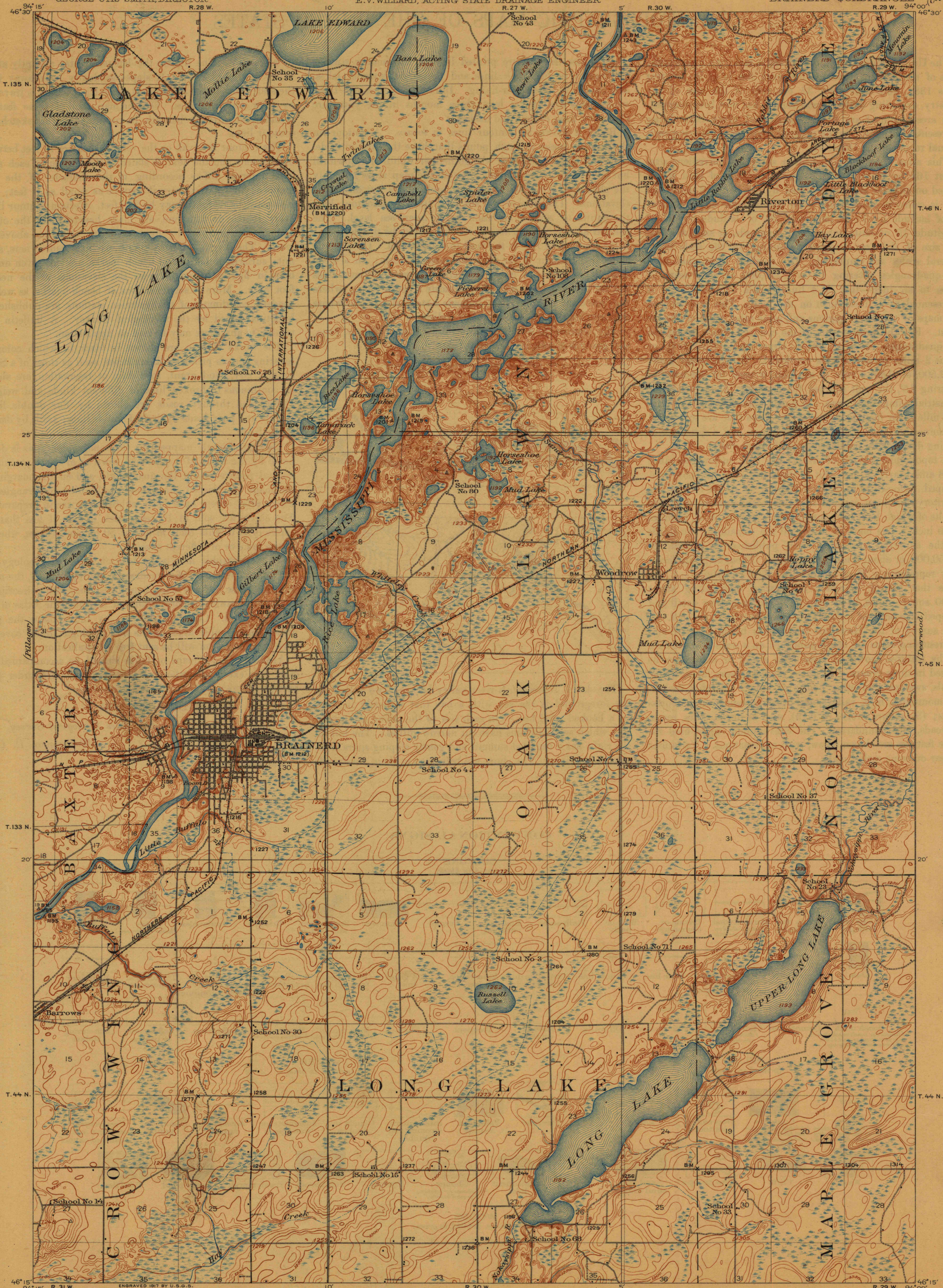


DEPARTMENT OF THE INTERIOR  
FRANKLIN K. LANE, SECRETARY  
U.S. GEOLOGICAL SURVEY  
GEORGE OTIS SMITH, DIRECTOR

TOPOGRAPHY  
STATE OF MINNESOTA  
W. S. HAMMOND, GOVERNOR  
J. A. O. PREUS, STATE AUDITOR  
JULIUS A. SCHMAHL, SEC. OF STATE  
E. V. WILLARD, ACTING STATE DRAINAGE ENGINEER

MINNESOTA  
(CROW WING COUNTY)  
BRainerd QUADRANGLE



ENGRAVED 1917 BY U.S.G.S.  
R. B. Marshall, Chief Geographer.  
W. H. Herron, Geographer in charge.  
Topography by F. B. Barrett and J. H. Wilson.  
Control by U.S. Coast and Geodetic Survey,  
Mississippi River Commission, E. L. McNair, and J. M. Ray.  
Surveyed in 1914-1915.

GEOGRAPHY LABORATORY  
DEPARTMENT OF GEOLOGY  
UNIVERSITY OF WISCONSIN

Scale 1:25,000  
1 2 3 4 Miles  
1 2 3 4 Kilometers  
Contour interval 10 feet.  
Datum is mean sea level.

Edition of 1918.

TRUE NORTH  
MAGNETIC NORTH  
APPROXIMATE MEAN  
DECLINATION 1918.

BRainerd