

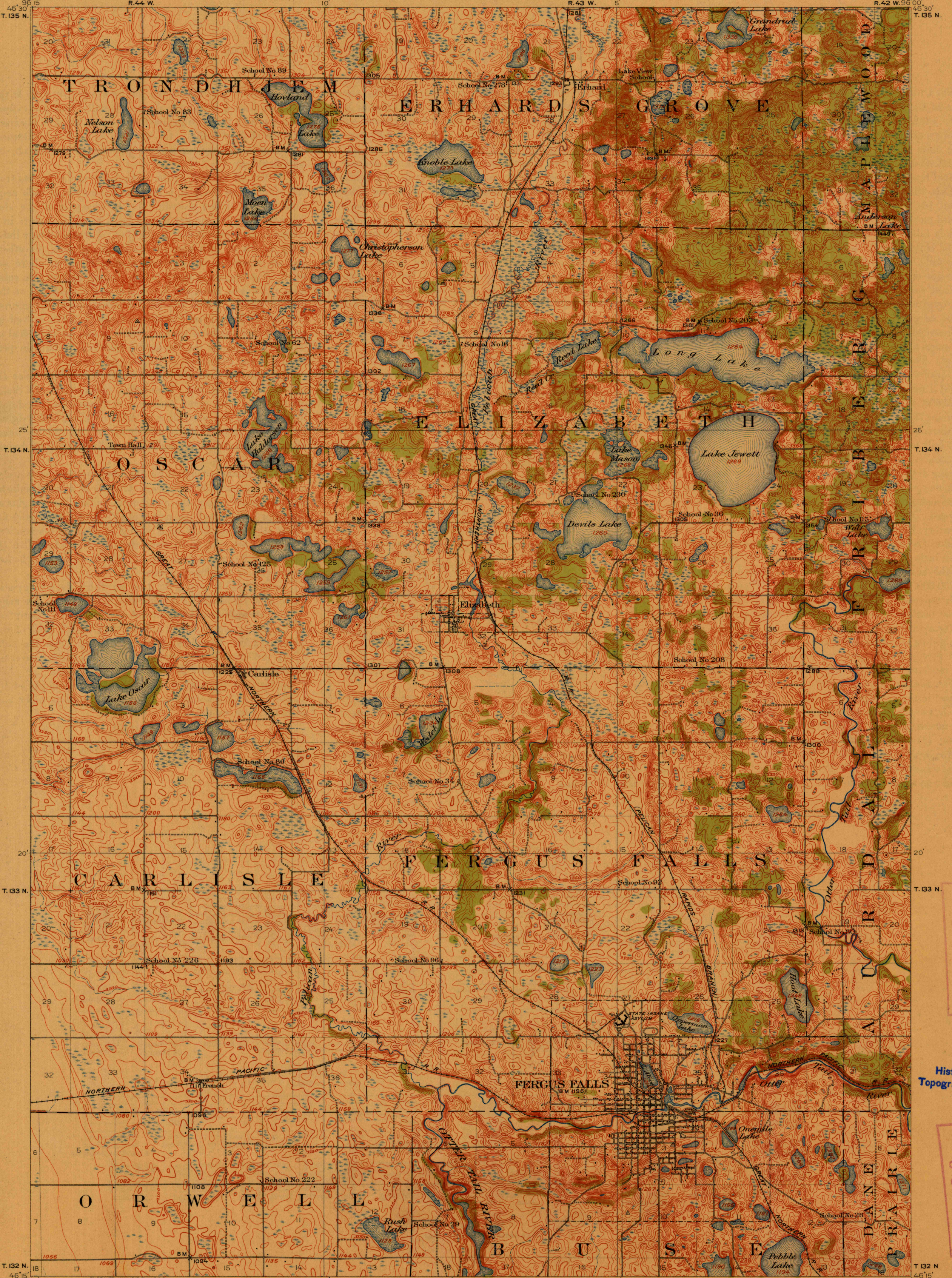
TOPOGRAPHY

STATE OF MINNESOTA

U.S. GEOLOGICAL SURVEY  
GEORGE OTIS SMITH  
DIRECTOR

A.O. EBERHART, GOVERNOR  
SAMUEL G. IVERSON, STATE AUDITOR  
JULIUS A. SCHMAHL, SEC. OF STATE  
GEORGE A. RALPH, CHIEF ENGINEER

MINNESOTA  
(OTTER TAIL COUNTY)  
FERGUS FALLS QUADRANGLE



FILE COPY  
Ed. Div. Topographic Maps.

FILE COPY  
Topographic Maps.

U.S.G.S.  
FILE COPY  
Ed. Div. Topographic Maps.

USCS  
Historical File  
Topographic Division

U.S.G.S.  
FILE COPY  
Ed. Div. Topographic Maps.

ENGRAVED JULY 1913 BY U.S.G.S.  
R.B. Marshall, Chief Geographer.  
W.H. Herron, Geographer in charge.  
Topography by C.L. Sadler, E.L. Hain,  
and O.H. Nelson.  
Control by Coast and Geodetic Survey,  
E.M. Douglas, C.B. Kendall, J.M. Ray, and  
E.C. Bibbee.  
Surveyed in 1911.  
SURVEYED IN COOPERATION WITH THE STATE OF MINNESOTA.

Sadler  
Hain  
Sadler

Scale 62500  
1 2 3 4 Miles  
1 2 3 4 5 Kilometers  
Contour interval 10 feet.  
Datum is mean sea level.

TRUE NORTH  
MAGNETIC NORTH  
APPROXIMATE MEAN  
DECLINATION 1911.

Edition of Sep. 1913.

NOV 29 1913 3518

FERGUS FALLS, Minn.