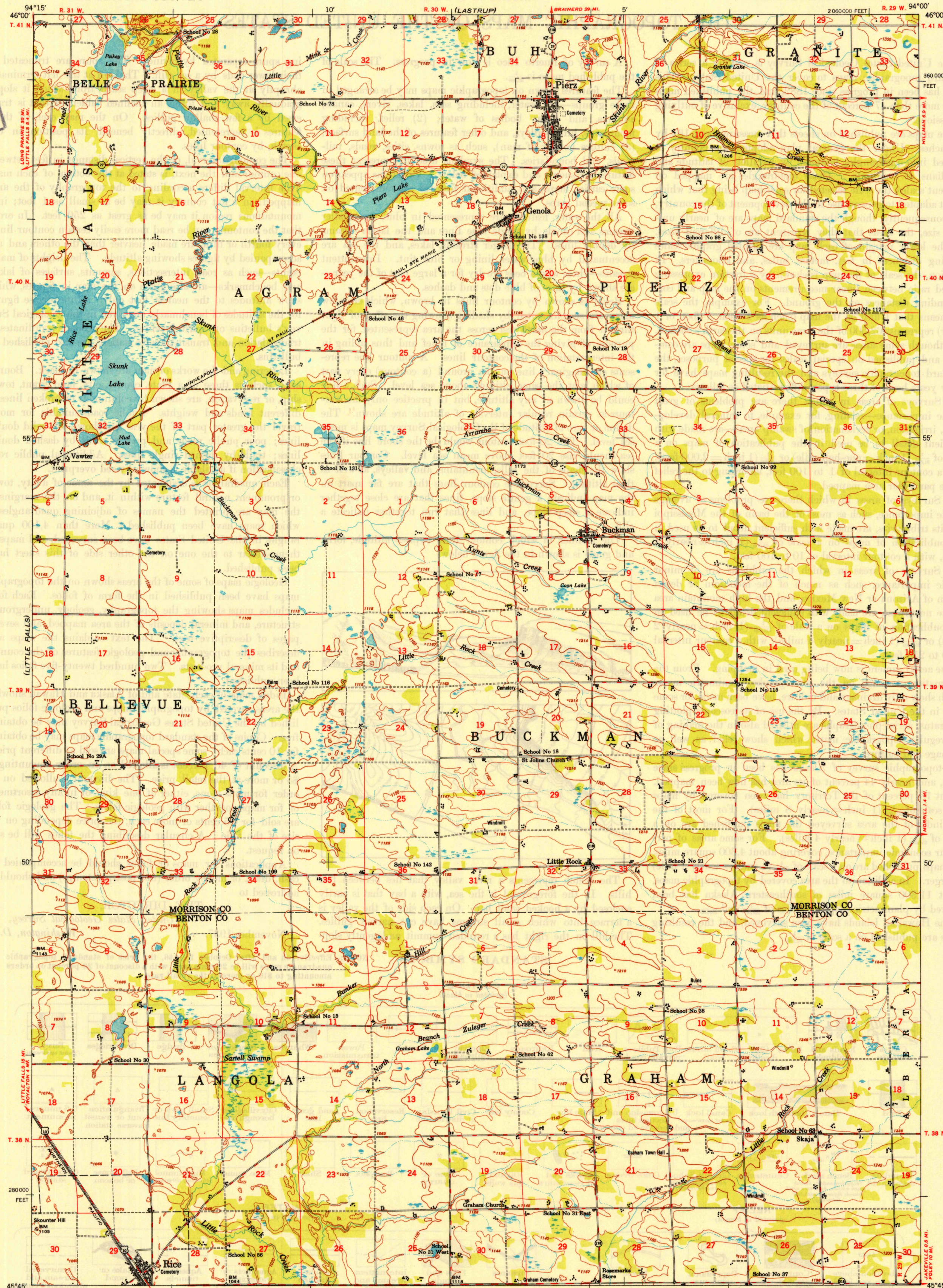


UNITED STATES
DEPARTMENT OF THE INTERIOR
GEOLOGICAL SURVEY

UNITED STATES
DEPARTMENT OF THE ARMY
CORPS OF ENGINEERS

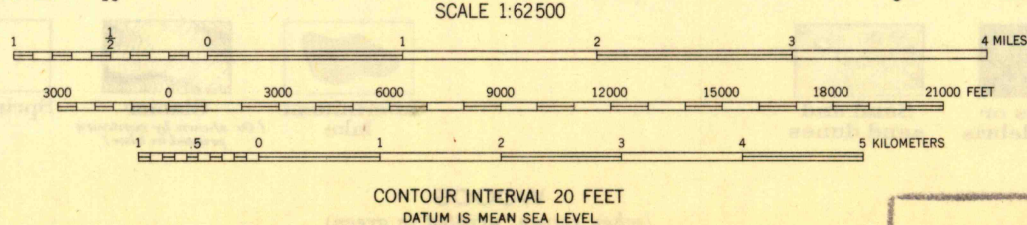
PIERZ QUADRANGLE
MINNESOTA
15 MINUTE SERIES (TOPOGRAPHIC)



U.S.G.S.
FILE COPY
Inspection and Editing.

Map by the Army Map Service
Edited and published by the Geological Survey
Control by USGS, USC&GS, and AMS
Topography from aerial photographs by multiplex methods
Aerial photographs taken 1947. Field check 1948
Polyconic projection. 1927 North American Datum
10,000-foot grid based on Minnesota coordinate system,
central zone
No distinction is made between dwellings, barns,
commercial, and industrial buildings

TRUE NORTH
MAGNETIC NORTH
APPROXIMATE MEAN
DECLINATION, 1948



ROAD CLASSIFICATION
HARD-SURFACE ALL WEATHER ROADS
Heavy-duty ————
Medium-duty ————
Loose-surface, graded, or narrow hard-surface ————
U.S. Route
State Route
DRY WEATHER ROADS
Improved dirt ————
Unimproved dirt ————

U.S. USGS
Historical File
Topographic Division
Inspection and Editing.

PIERZ, MINN.
N4545-W9400/15
EDITION OF 1950

THIS MAP COMPLIES WITH NATIONAL MAP ACCURACY STANDARDS
FOR SALE BY U.S. GEOLOGICAL SURVEY, WASHINGTON 25, D. C.