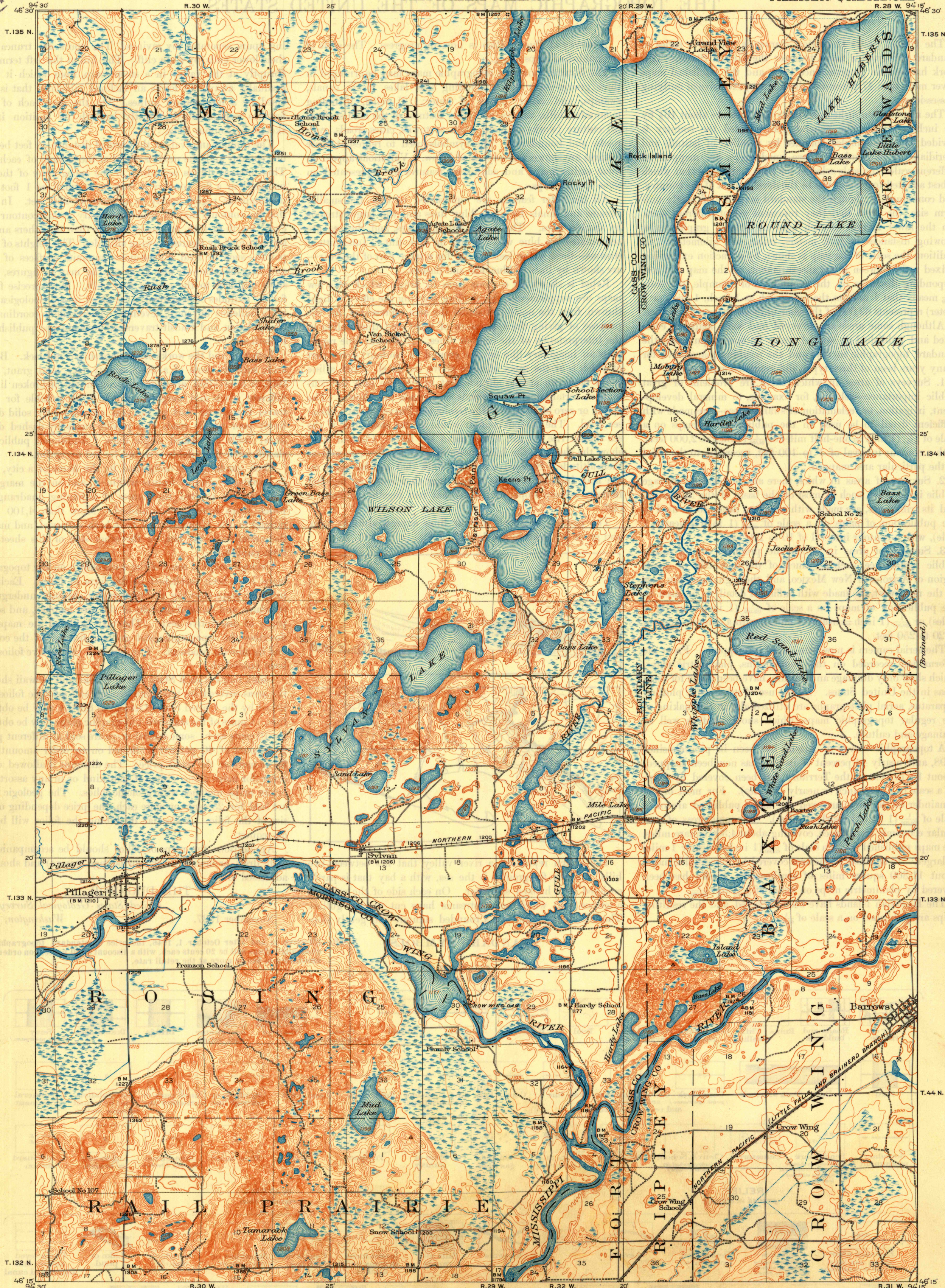


U.S.G.S  
FILE COPY  
Imposition and Editing

UNITED STATES  
DEPARTMENT OF THE INTERIOR  
GEOLOGICAL SURVEY

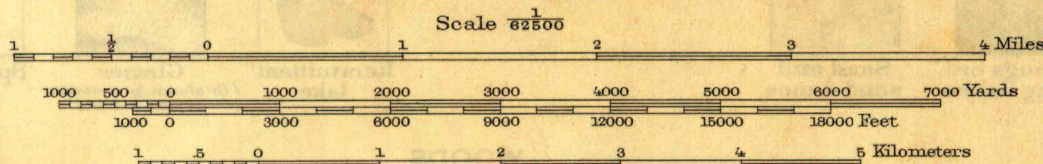
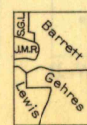
STATE OF MINNESOTA  
REPRESENTED BY THE  
STATE DRAINAGE COMMISSION

MINNESOTA  
PILLAGER QUADRANGLE

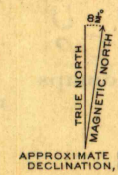


W. H. Herron, Acting Chief Geographer.  
Glenn S. Smith, Topographic Engineer in charge.  
Topography by J. L. Lewis, S. G. Lund, F. B. Barrett, J. M. Rawls, and W. S. Gehres.  
Control by U.S. Coast and Geodetic Survey, Mississippi River Commission, J. H. Wilson, and C. E. Mills.  
Surveyed in 1916.

SURVEYED IN COOPERATION WITH THE STATE OF MINNESOTA.



Contour interval 10 feet.  
Datum is mean sea level.



APPROXIMATE MEAN  
DECLINATION, 1916

Edition of 1919, reprinted 1949  
Polyconic projection.

MINN.  
PILLAGER  
N4615-W9415/15

USGS  
Historical File  
Topographic Division  
FILE COPY  
Imposition and Editing