

TOPOGRAPHY

STATE OF MINNESOTA

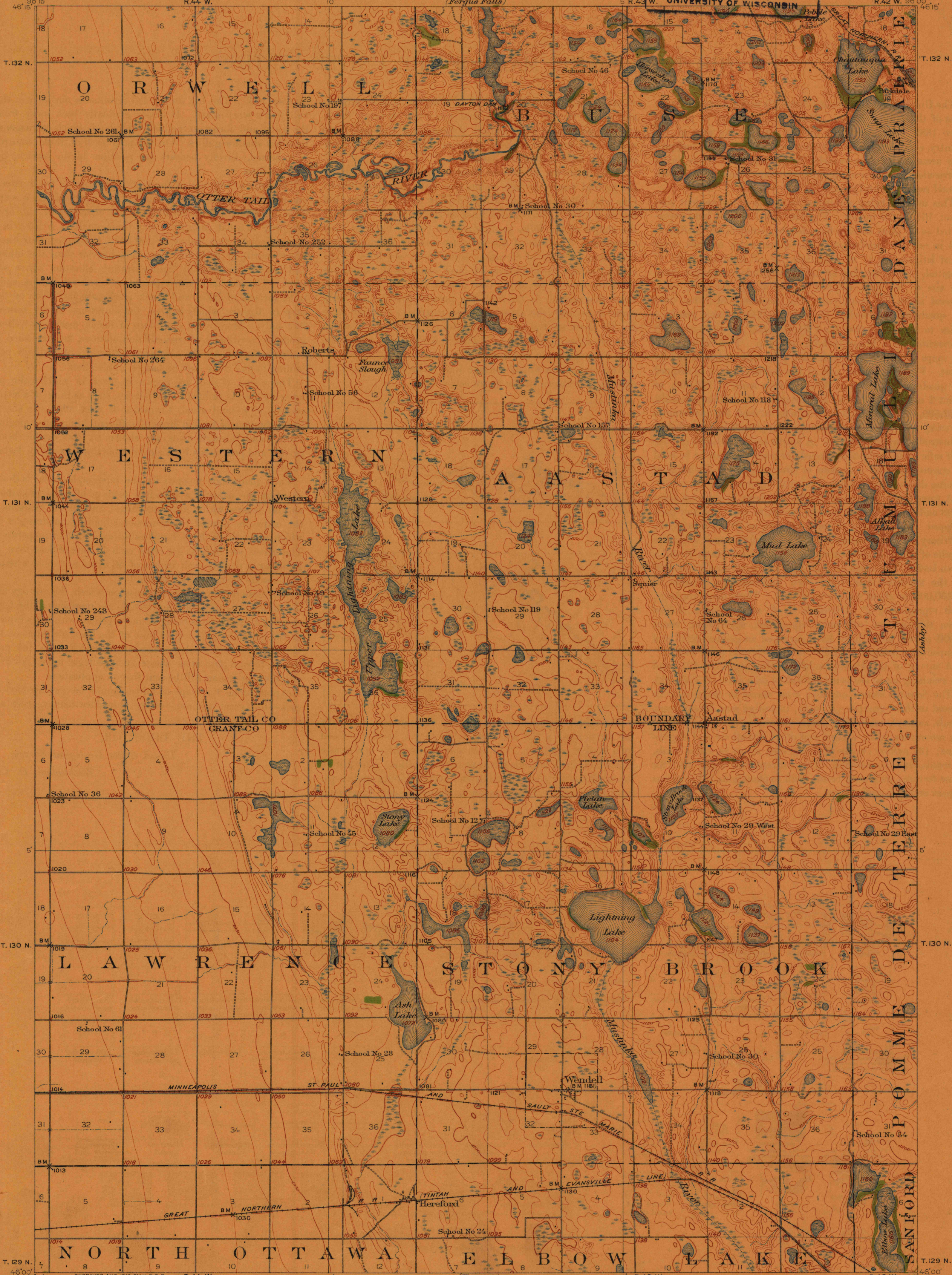
A. O. EBERHART, GOVERNOR. STATE
SAMUEL G. IVERSON, STATE AUDITOR. DRAINAGE
JULIUS A. SCHMAHL, SEC. OF STATE. COMMISSION
GEORGE A. RALPH, CHIEF ENGINEER.
(Fergus Falls)

U.S. GEOLOGICAL SURVEY
GEORGE OTIS SMITH, DIRECTOR
R. 44 W.

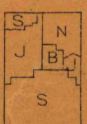
GEOGRAPHY LABORATORY

MINNESOTA

WENDELL QUADRANGLE
UNIVERSITY OF WISCONSIN
R. 42 W. 96° 00'



ENGRAVED AUG. 1912 BY U. S. G. S.
R. B. Marshall, Chief Geographer.
W. H. Heron, Geographer in charge.
Topography by C. L. Sadler, O. H. Nelson,
W. S. Johnson, and F. B. Barnett.
Control by Coast and Geodetic Survey,
E. M. Douglas, C. R. Beckler, and J. M. Ray.
Surveyed in 1910.
SURVEYED IN COOPERATION WITH THE STATE OF MINNESOTA.



Scale 62500
4 Miles
5 Kilometers
Contour interval 10 feet.
Datum is mean sea level.

Edition of Jan. 1913.

WENDELL

NOTE: Elevations and topography in accordance
with the level adjustment of 1907. To reduce
to 1912 adjustment subtract 1.4 feet.

APPROXIMATE MEAN
PRECIPITATION 1910.