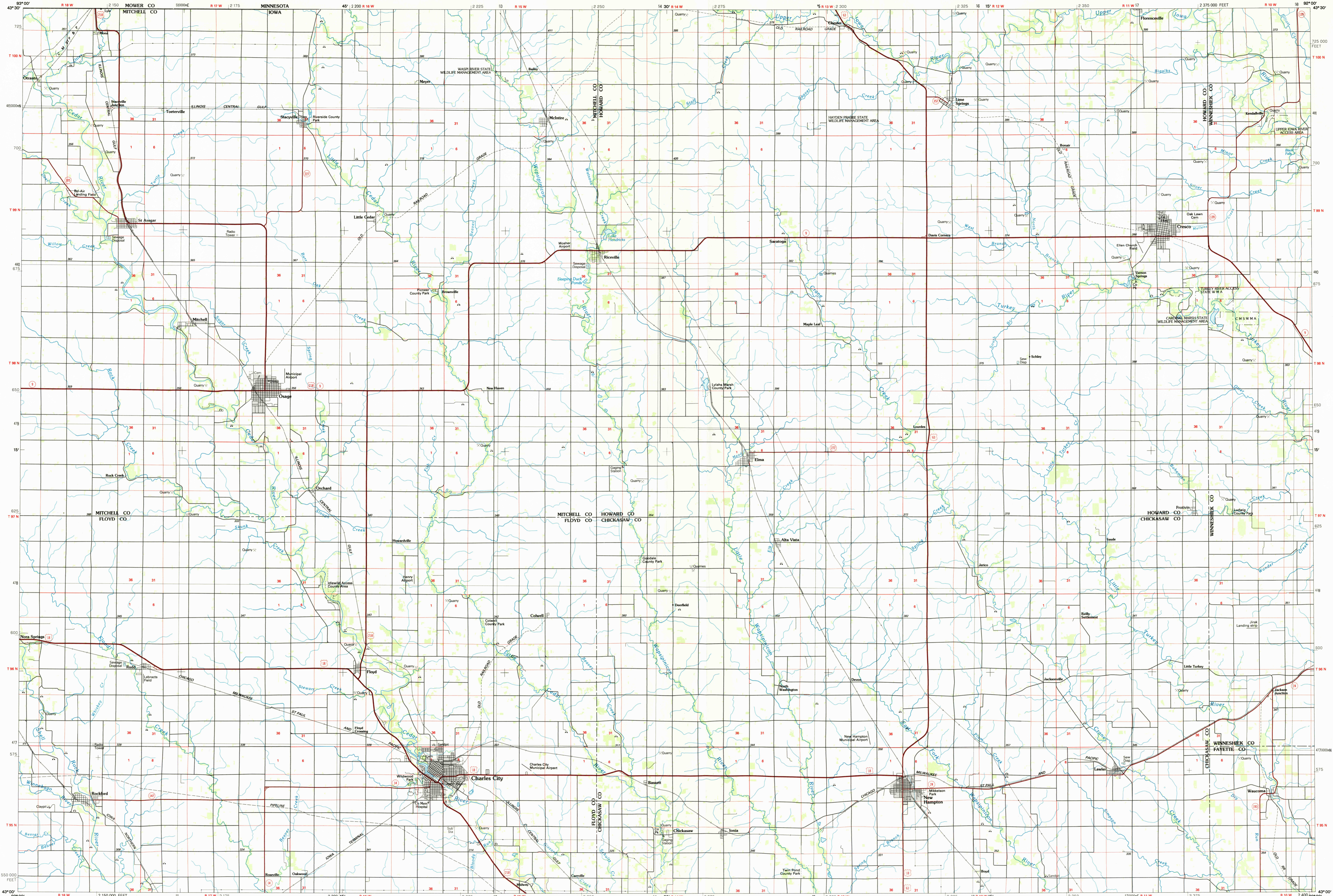


CHARLES CITY, IOWA-MINNESOTA

30 X 60 MINUTE SERIES (PLANIMETRIC)



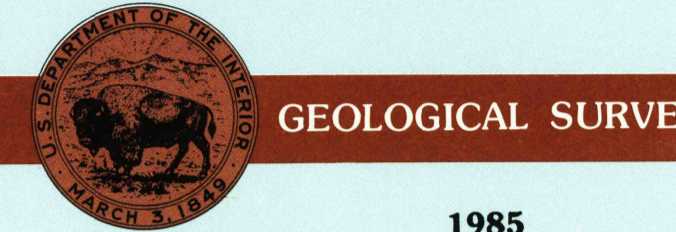
Charles City IOWA-MINNESOTA

1:100 000-scale planimetric map



30 X 60 MINUTE QUADRANGLE SHOWING

- Elevations in meters
- Highways, roads and other manmade structures
- Water features
- Woodland areas
- Geographic names



Produced by the United States Geological Survey
 Compiled from USGS 1:24 000-scale topographic maps dated 1971-1981. Planimetry revised from aerial photographs taken 1982-83 and other source data. Revised information not field checked. Map edited 1985.
 Projection and 10 000-meter grid, zone 15, Universal Transverse Mercator
 To place on the predicted North American Datum 1983, move the projection lines 6 meters north and 16 meters east
 There may be private inholdings within the boundaries of the National or State reservations shown on this map

NATIONAL GEODETIC VERTICAL DATUM OF 1929
 ELEVATIONS SHOWN TO THE NEAREST METER

THIS MAP COMPLIES WITH NATIONAL MAP ACCURACY STANDARDS

CONVERSION TABLE		DECLINATION DIAGRAM		ADJOINING MAPS		
Meters	Feet	Magnetic Declination		1	2	3
1	3.2808	G.M. 1983		4	5	
2	6.5617	Magnetic Declination		6	7	8
3	9.8425	at center of map				
4	13.1234	Diagram is approximate				
5	16.4042					
6	19.6850					
7	22.9659					
8	26.2467					
9	29.5275					
10	32.8084					

FOR SALE BY U.S. GEOLOGICAL SURVEY
 DENVER, COLORADO 80225, OR RESTON, VIRGINIA 22092

Topographic Map Symbols

Primary highway, hard surface	
Secondary highway, hard surface	
Light duty road, principal street, hard or improved surface	
Other road or street, trail	
Route marker: Interstate, U.S., State	
Railroad: standard gage; narrow gage	
Bridge: overpass; underpass	
Tunnel: road; railroad	
Built up area, locality, elevation	
Airport: landing field; landing strip	
National boundary	
State boundary	
County boundary	
National or State reservation boundary	
Land grant boundary	
U.S. public lands survey: range, township, section	
Range, township, section line: protracted	
Power transmission line: pipeline	
Dam; dam with lock	
Cemetery; building	
Wells: water well; spring	
Mine shaft; adit or cave; mine, quarry; gravel pit	
Campground; picnic area; U.S. location monument	
Ruins; cliff dwelling	
Distorted surface: strip mine, lava, sand	
Contours: index; intermediate; supplementary	
Bathymetric contours: index; intermediate	
Stream, lake: perennial; intermittent	
Rapids, large and small; falls, large and small	
Area to be submerged; marsh, swamp	
Land subject to controlled inundation; woodland	
Scrub; mangrove	
Orchards; vineyard	

A pamphlet describing topographic maps is available on request