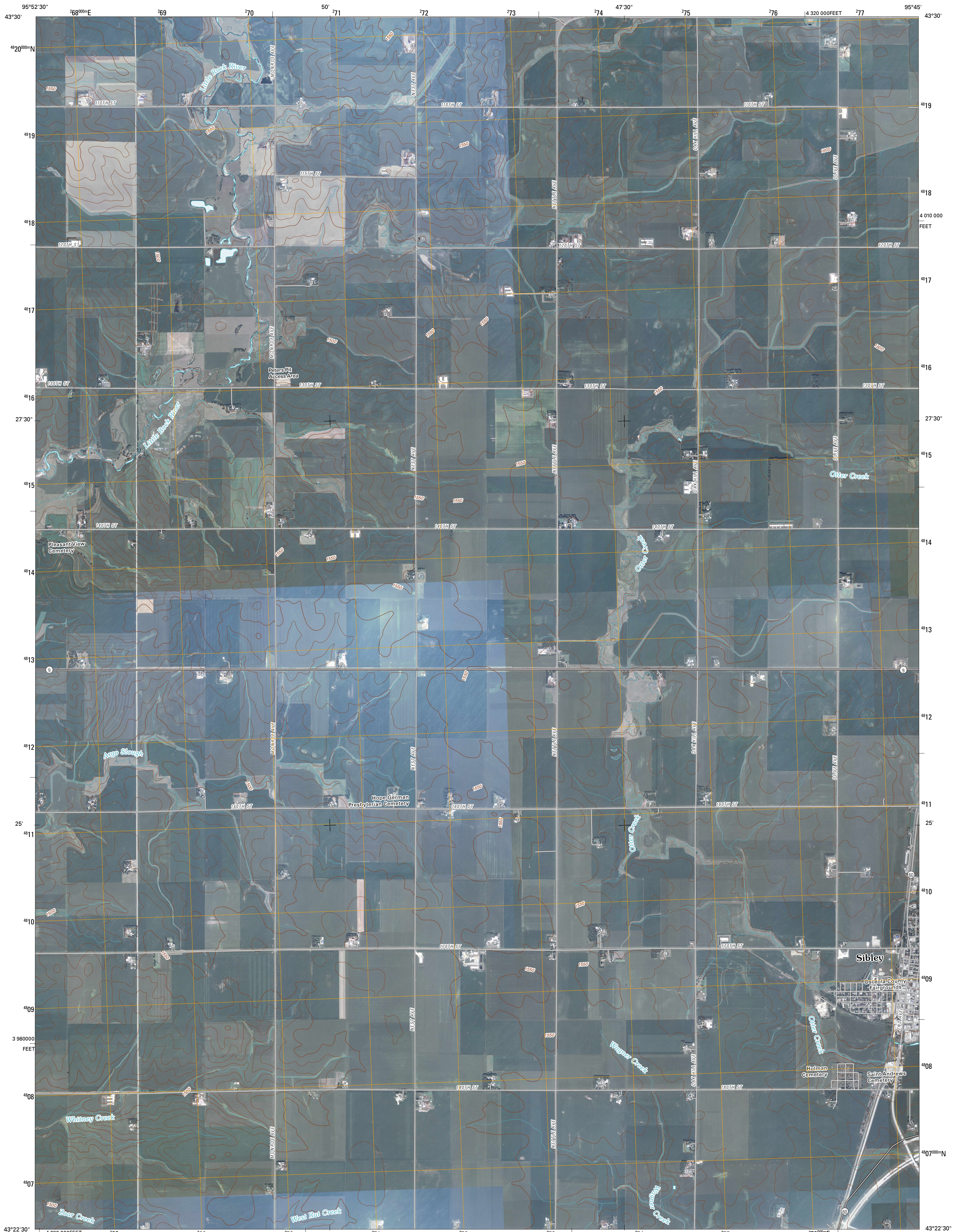




U.S. DEPARTMENT OF THE INTERIOR  
U. S. GEOLOGICAL SURVEY

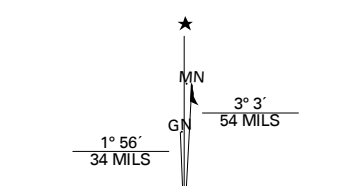


SIBLEY WEST QUADRANGLE  
IOWA-MINNESOTA  
7.5-MINUTE SERIES

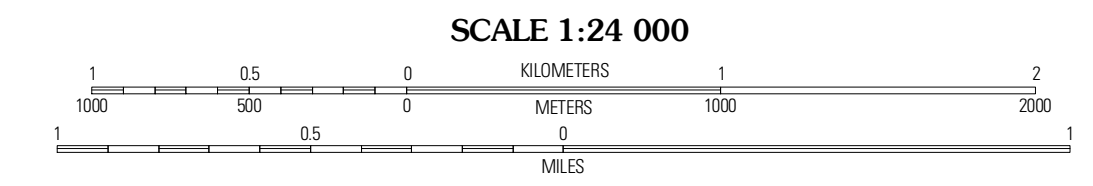


Produced by the United States Geological Survey  
North American Datum of 1983 (NAD83)  
World Geodetic System of 1984 (WGS84) Projection and  
1 000-meter grid: Universal Transverse Mercator, Zone 15T  
10 000-foot ticks: Iowa Coordinate System of 1983  
(north zone) and Minnesota Coordinate System of 1983  
(south zone)

Imagery.....NAP, August 2006  
Roads.....US Census Bureau TIGER data  
with limited USGS updates, 2005 - 2008  
Names.....GNIS, 2008  
Hydrography.....National Hydrography Dataset, 2006  
Contours.....National Elevation Dataset, 2006



U.S. National Grid
100,000m Square ID
TJ
Grid Zone Designation
15T



CONTOUR INTERVAL 10 FEET

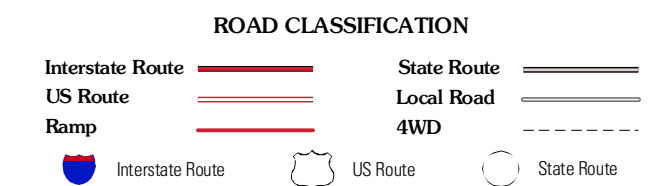
This map was produced to conform with version 0.5.10 of the  
draft USGS Standards for 7.5-Minute Quadrangle Maps.  
A metadata file associated with this product is also draft version 0.5.10



QUADRANGLE LOCATION

Adrian SW	Rushmore	Bigelow
Little Rock	Sibley West	Sibley East
George East	Ashton	Cloverdale

ADJOINING 7.5' QUADRANGLES



SIBLEY WEST, IA-MN  
2010