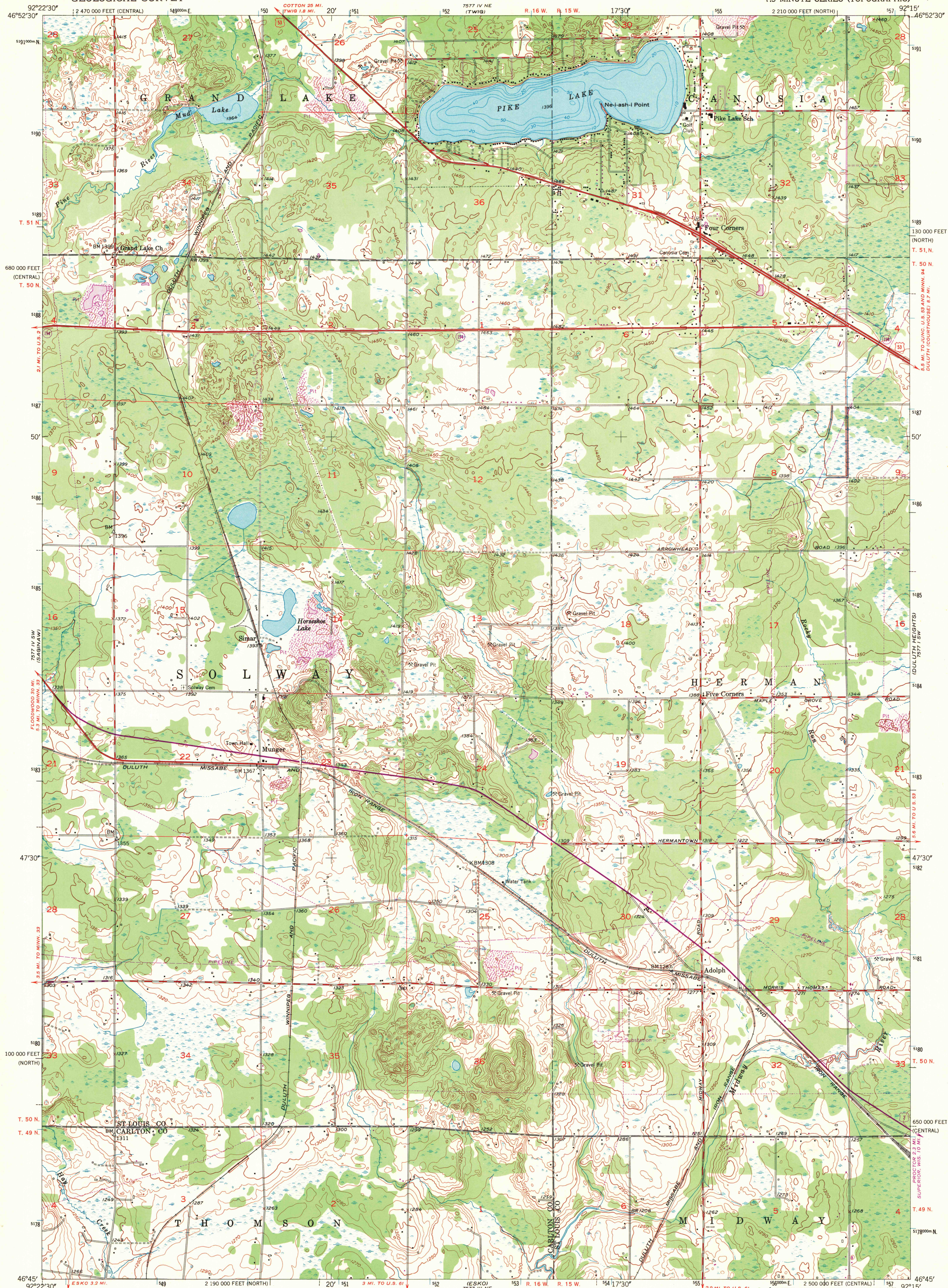


UNITED STATES
DEPARTMENT OF THE INTERIOR
GEOLOGICAL SURVEY

ADOLPH QUADRANGLE
MINNESOTA
7.5 MINUTE SERIES (TOPOGRAPHIC)



Mapped, edited, and published by the Geological Survey

Control by USGS and USC&GS

Topography from aerial photographs by Kelsh plotter

Aerial photographs taken 1952. Field check 1953

Depth curves compiled from charts furnished by Minnesota Department of Conservation

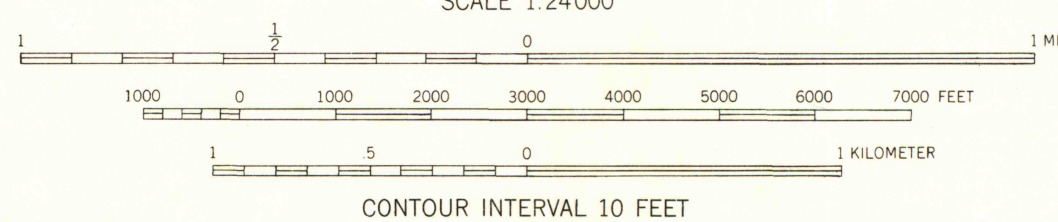
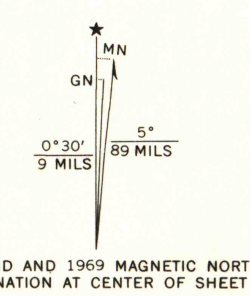
Polyconic projection. 1927 North American datum

10,000-foot grids based on Minnesota coordinate system, north and central zones

1000-meter Universal Transverse Mercator grid ticks, zone 15, shown in blue

Revisions shown in purple compiled in cooperation with the State of Minnesota from aerial photographs taken 1969

This information not field checked



CONTOUR INTERVAL 10 FEET
DATUM IS MEAN SEA LEVEL



QUADRANGLE LOCATION

ROAD CLASSIFICATION

Heavy-duty	4 LANE 6 LANE	Light-duty
Medium-duty	4 LANE 6 LANE	Unimproved dirt
	U. S. Route	State Route

THIS MAP COMPLIES WITH NATIONAL MAP ACCURACY STANDARDS
FOR SALE BY U. S. GEOLOGICAL SURVEY, DENVER, COLORADO 80225, OR WASHINGTON, D. C. 20242
A FOLDER DESCRIBING TOPOGRAPHIC MAPS AND SYMBOLS IS AVAILABLE ON REQUEST

1971

1953

ADOLPH, MINN.
N4645-W9215/7.5

PHOTOREVISED 1969
AMS 7577 IV SE-SERIES V872