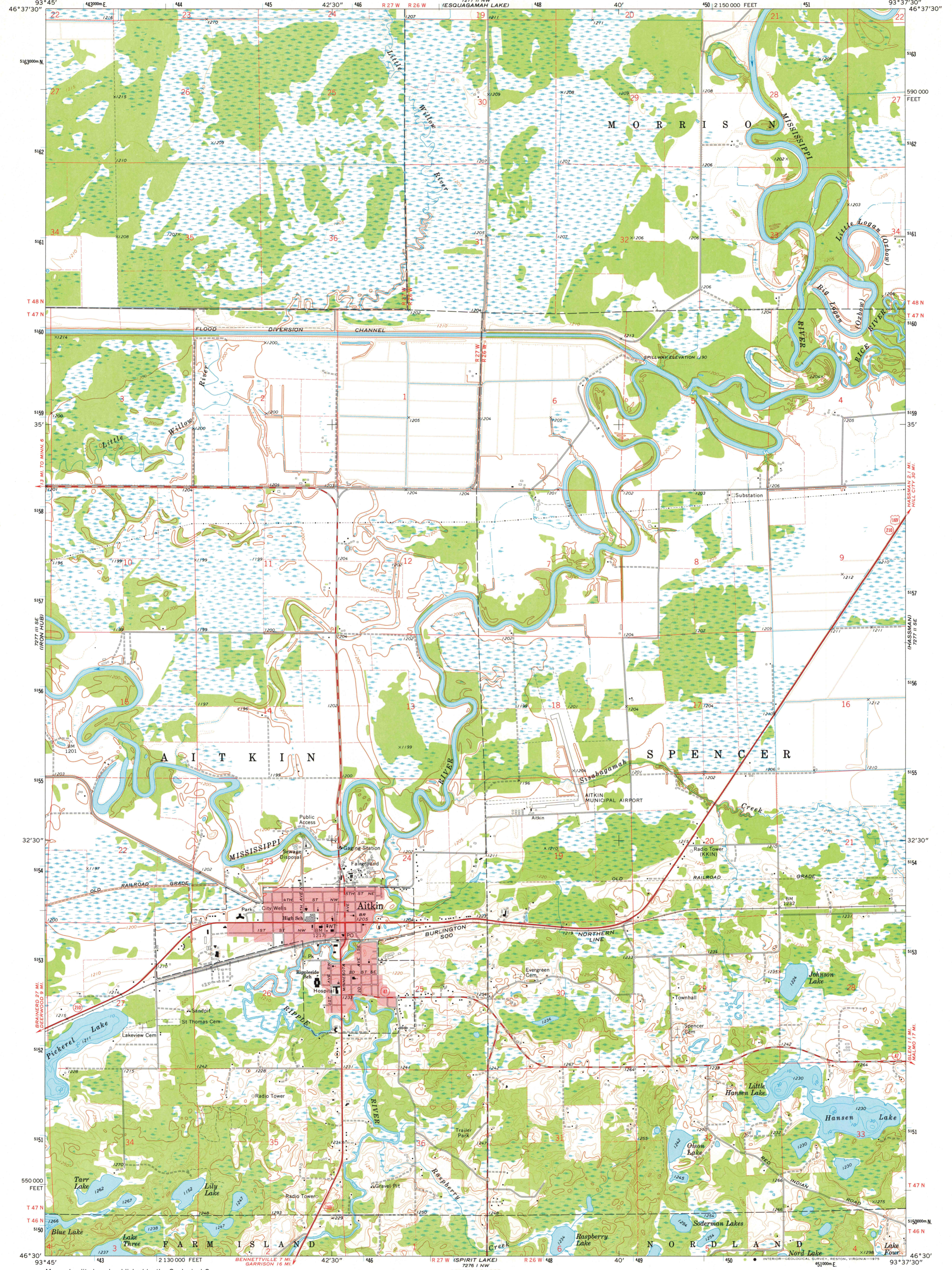
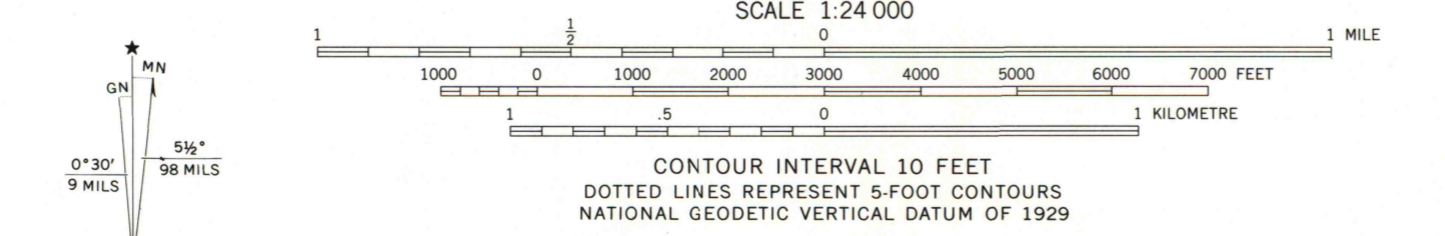


7277 II NE (ROSS LAKE)

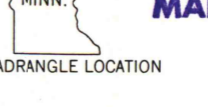
7277 II NE (WALKENABO)



Mapped, edited, and published by the Geological Survey
Control by USGS and NOS/NOAA
Topography by photogrammetric methods from aerial
photographs taken 1973. Field checked 1973
Hydrography compiled from information furnished by
Minnesota Department of Natural Resources
Projection and 10,000-foot grid ticks: Minnesota coordinate
system, central zone (Lambert conformal conic)
1000-metre Universal Transverse Mercator grid ticks,
zone 15, shown in blue. 1927 North American datum
Red tint indicates areas in which only landmark buildings are shown
Fine red dashed lines indicate selected fence and field lines
where generally visible on aerial photographs
This information is unchecked



ROAD CLASSIFICATION
Primary highway, hard surface
Secondary highway, hard surface
Unimproved road
Light-duty road, hard or improved surface
Interstate Route
U. S. Route
State Route



MAP AND AIR PHOTO LIBRARY
AITKIN, MINN.
SW/4 AITKIN 15' QUADRANGLE
N4630—W9337.5/7.5
FEB 9 - 1976
1973
AMS 7277 II SW—SERIES V872

THIS MAP COMPLIES WITH NATIONAL MAP ACCURACY STANDARDS
FOR SALE BY U. S. GEOLOGICAL SURVEY, RESTON, VIRGINIA 22092
A FOLDER DESCRIBING TOPOGRAPHIC MAPS AND SYMBOLS IS AVAILABLE ON REQUEST