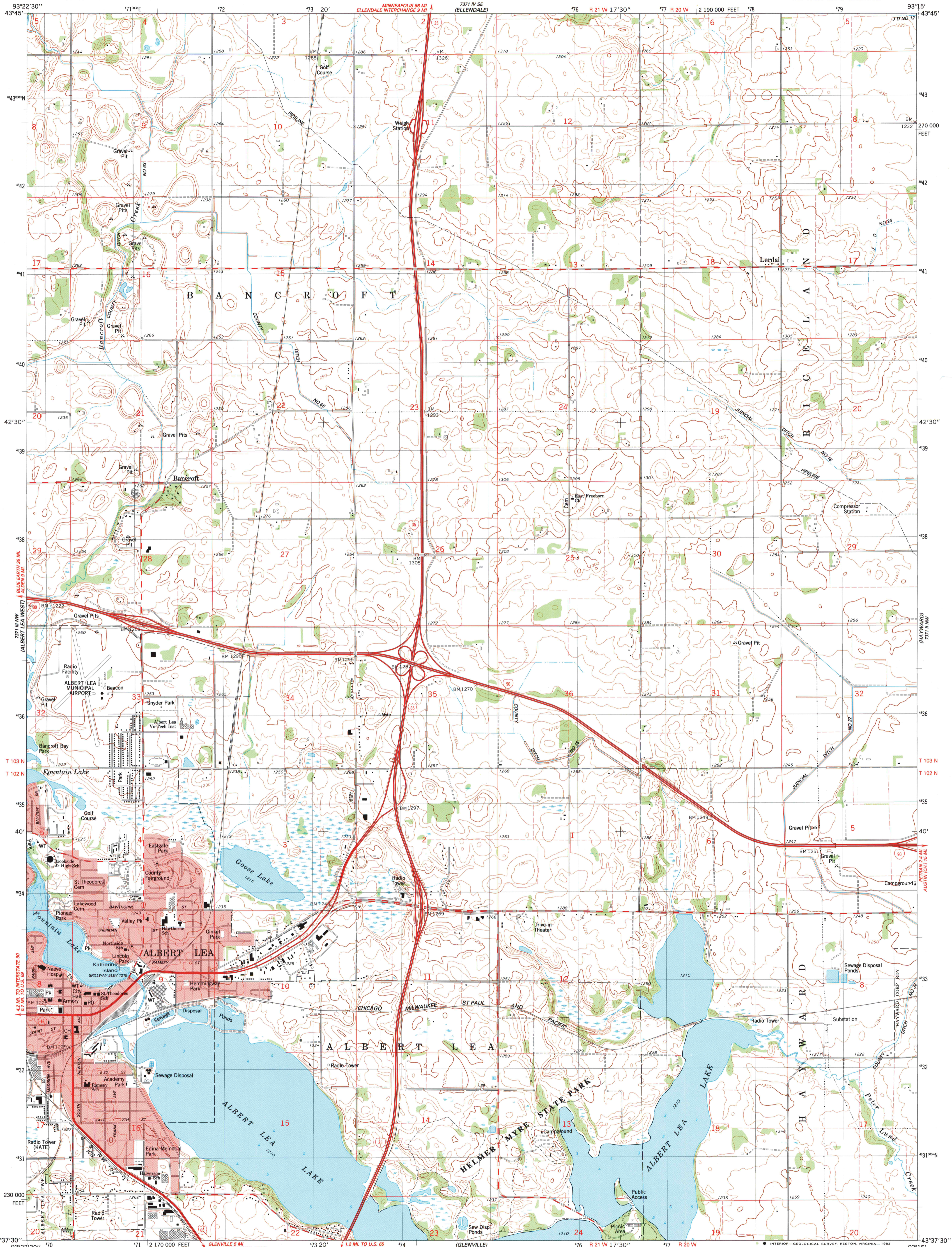


7371 1/4 NW
(PARTLAND)

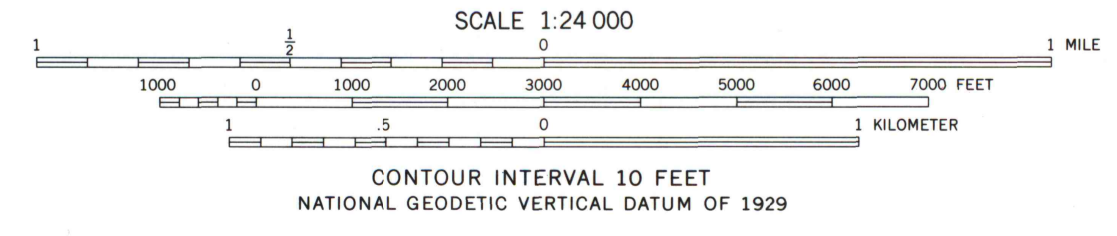
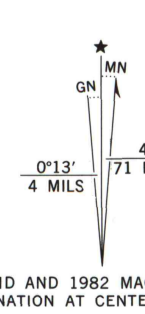
UNITED STATES
DEPARTMENT OF THE INTERIOR
GEOLOGICAL SURVEY

ALBERT LEA EAST QUADRANGLE
MINNESOTA-FREEBORN CO.
7.5 MINUTE SERIES (TOPOGRAPHIC)
NE/4 ALBERT LEA 15' QUADRANGLE

7371 1/4 SW
(HOLLANDALE)



Mapped, edited, and published by the Geological Survey
Control by USGS and NOS/NOAA
Topography by photogrammetric methods from aerial photographs
taken 1979. Field checked 1980. Map edited 1982
Hydrography compiled from information furnished by
Minnesota Department of Natural Resources
Projection and 10,000-foot grid ticks. Minnesota coordinate
system, south zone (Lambert conformal conic)
1000-meter Universal Transverse Mercator grid, zone 15
1927 North American Datum
To place on the predicted North American Datum 1983
move the projection lines 6 meters north and
18 meters east as shown by dashed corner ticks
There may be private inholdings within the boundaries of the
National or State reservations shown on this map
Red tint indicates areas in which only landmark buildings are shown
Fine red dashed lines indicate selected fence and field lines where
generally visible on aerial photographs. This information is unchecked



ROAD CLASSIFICATION

Primary highway, hard surface	Light-duty road, hard or improved surface
Secondary highway, hard surface	Unimproved road

Legend for road types: Interstate Route, U.S. Route, State Route



ALBERT LEA EAST, MINN.
NE/4 ALBERT LEA 15' QUADRANGLE
N4337.5-W9315/7.5

A.H. ROBINSON
MAP LIBRARY
MAY 29 1984
University of Wisconsin
Madison

THIS MAP COMPLIES WITH NATIONAL MAP ACCURACY STANDARDS
FOR SALE BY U.S. GEOLOGICAL SURVEY, RESTON, VIRGINIA 22092
A FOLDER DESCRIBING TOPOGRAPHIC MAPS AND SYMBOLS IS AVAILABLE ON REQUEST

1982
DMA 7371 III NE-SERIES V872