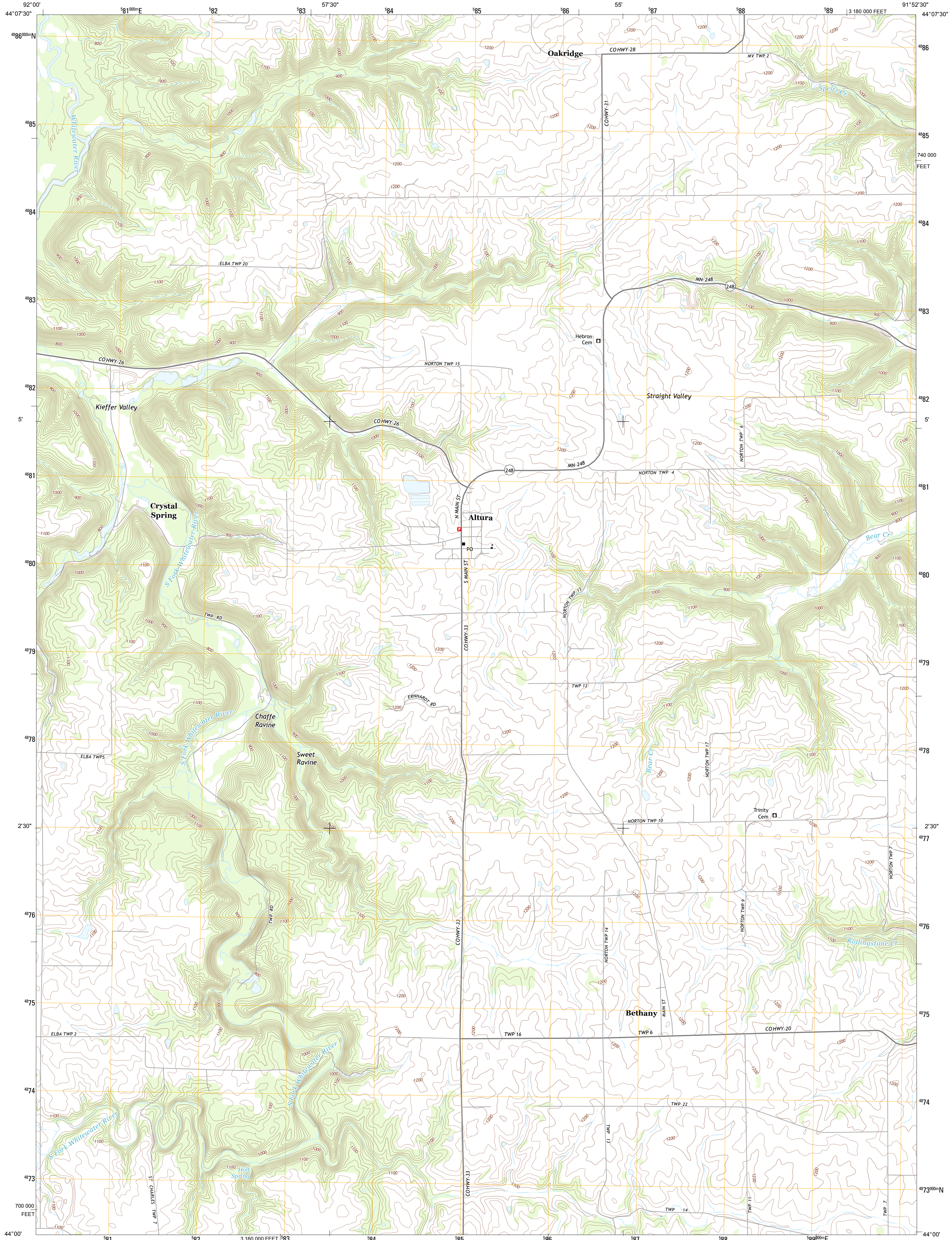




U.S. DEPARTMENT OF THE INTERIOR  
U. S. GEOLOGICAL SURVEY

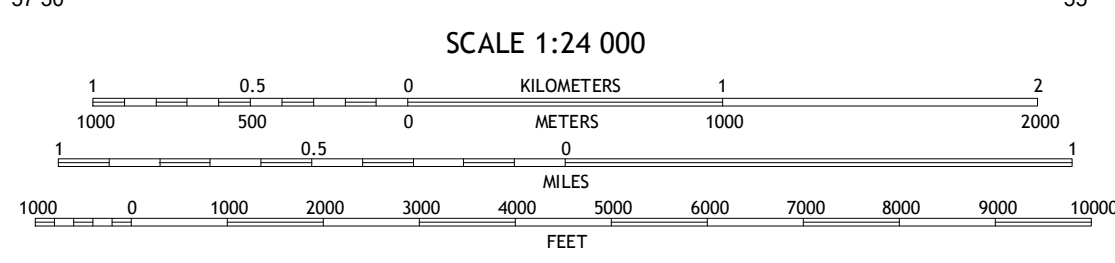
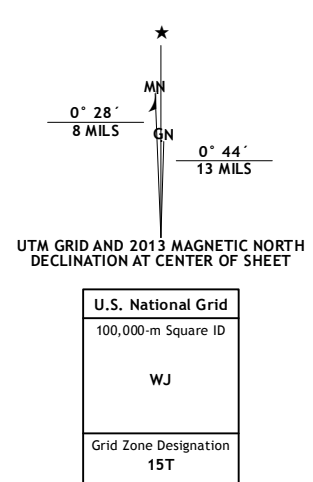


ALTURA QUADRANGLE  
MINNESOTA-WINONA CO.  
7.5-MINUTE SERIES



Produced by the United States Geological Survey  
North American Datum of 1983 (NAD83)  
World Geodetic System of 1984 (WGS84), Projection and  
1 000-meter grid: Universal Transverse Mercator, Zone 15T  
10 000-foot ticks: Minnesota Coordinate System of 1983 (south zone)

Imagery.....NAIP, July 2010  
Roads.....©2006-2012 TomTom  
Names.....©GNIS, 2013  
Hydrography.....National Hydrography Dataset, 2010  
Contours.....National Elevation Dataset, 1998  
Boundaries.....Census, IBWC, IBC, USGS, 1972 - 2012



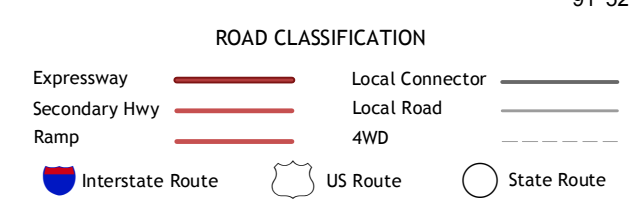
CONTOUR INTERVAL 20 FEET  
NORTH AMERICAN VERTICAL DATUM OF 1988  
This map was produced to conform with the  
National Geospatial Program US Topo Product Standard, 2011.  
A metadata file associated with this product is draft version 0.6.11



QUADRANGLE LOCATION

|               |        |              |
|---------------|--------|--------------|
| Beaver        | Weaver | Cochrane     |
| Elba          | Altura | Rollingstone |
| Saint Charles | Ulita  | Lewiston     |

ADJOINING 7.5 QUADRANGLES



ALTURA, MN  
2013