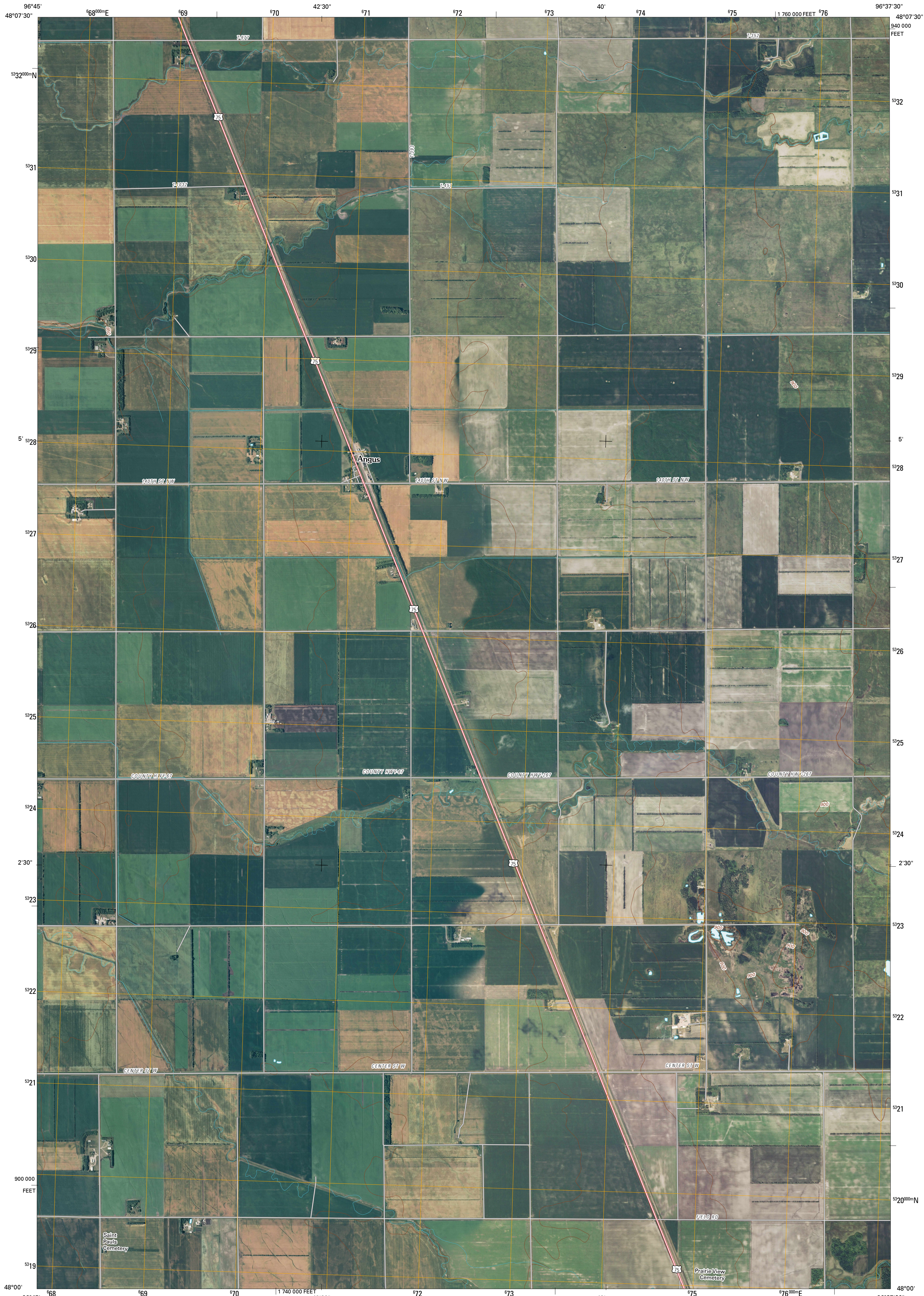




U.S. DEPARTMENT OF THE INTERIOR  
U. S. GEOLOGICAL SURVEY

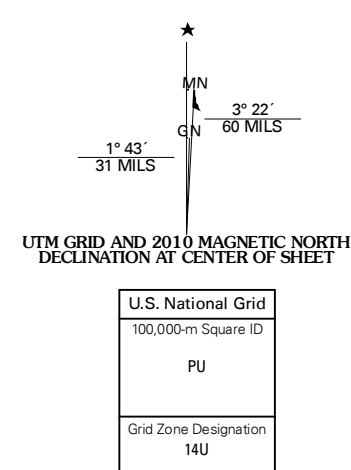


ANGUS QUADRANGLE  
MINNESOTA  
7.5-MINUTE SERIES



Produced by the United States Geological Survey  
North American Datum of 1983 (NAD83)  
World Geodetic System of 1984 (WGS84) Projection and  
1 000-meter grid: Universal Transverse Mercator, Zone 14U  
10 000-foot ticks: Minnesota Coordinate System of 1983  
(north zone)

Imagery:.....NAP, June 2009  
Roads:.....S2006-2010 Tele Atlas  
Names:.....GNIS, 2008  
Hydrography:.....National Hydrography Dataset, 2009  
Contours:.....National Elevation Dataset, 1999



SCALE 1:24 000

KILOMETERS  
METERS

MILES

FEET

CONTOUR INTERVAL 10 FEET

NORTH AMERICAN VERTICAL DATUM OF 1988

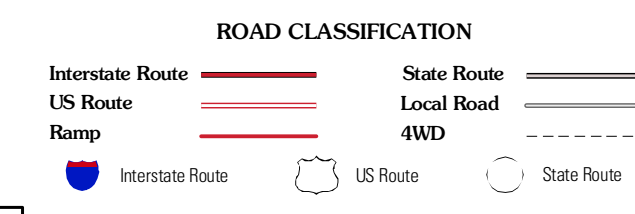
This map was produced to conform with version 0.5.10 of the  
draft USGS Standards for 7.5-Minute Quadrangle Maps.  
A metadata file associated with this product is draft version 0.5.11



QUADRANGLE LOCATION

Warren	Roan	Radium
Tabor	Angus	Angus SE
Key West	Euclid	Crookston

ADJOINING 7.5' QUADRANGLES



ANGUS, MN  
2010