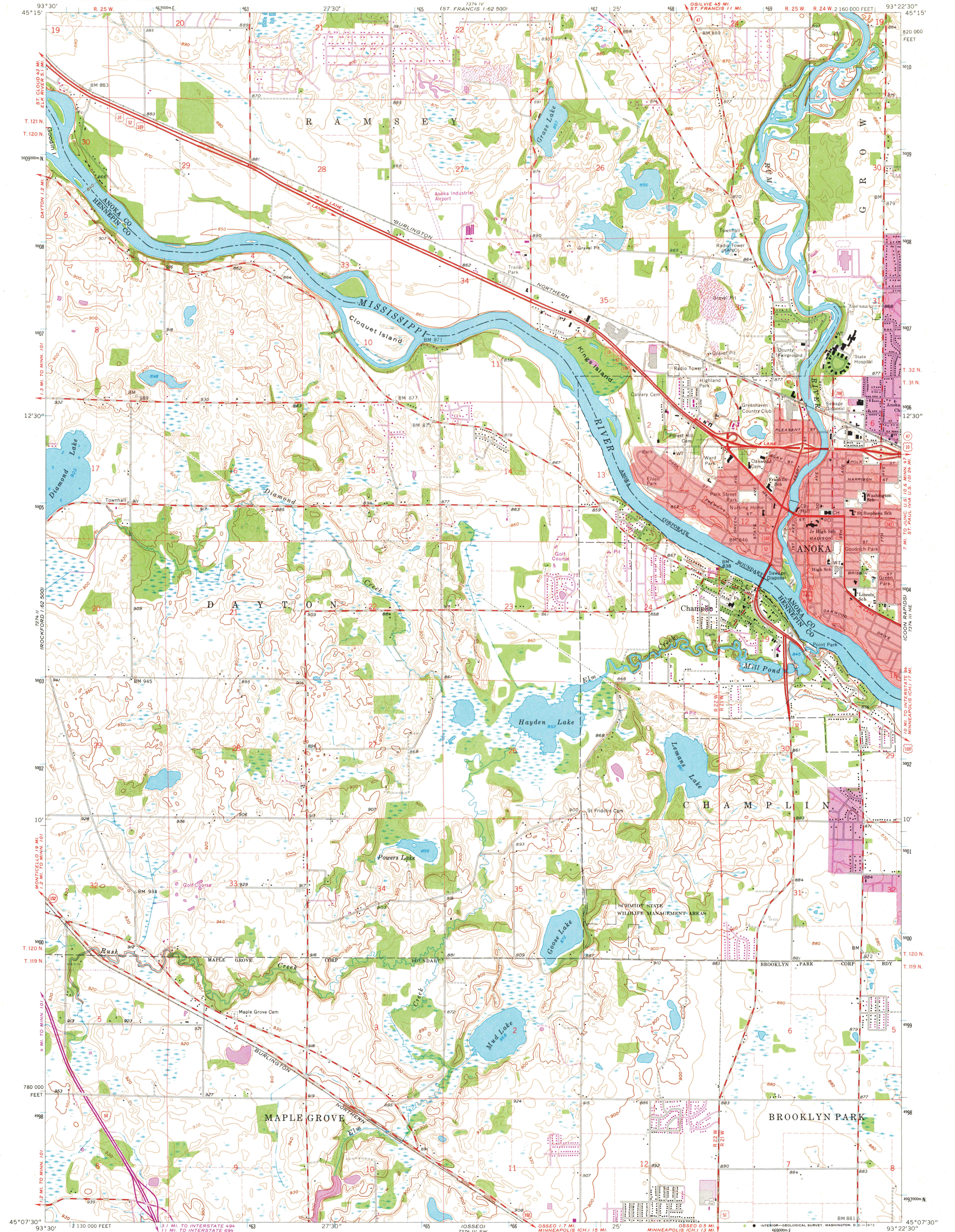
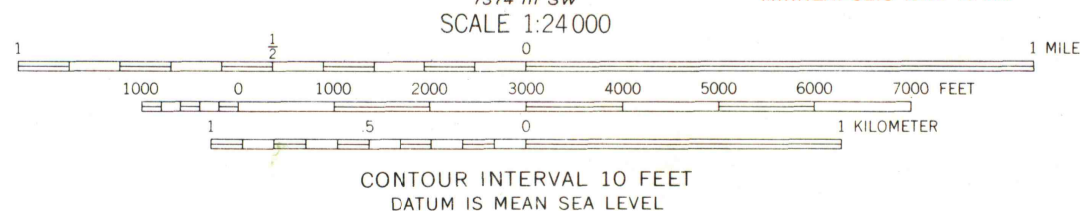


UNITED STATES
DEPARTMENT OF THE INTERIOR
GEOLOGICAL SURVEY

ANOKA QUADRANGLE
MINNESOTA
7.5 MINUTE SERIES (TOPOGRAPHIC)
NW/4 ANOKA 15' QUADRANGLE



Mapped, edited, and published by the Geological Survey
Control by USGS, USC&GS, USCE, and Minnesota Geodetic Survey
Topography by photogrammetric methods from aerial photographs
taken 1947. Field checked 1955. Revised from aerial
photographs taken 1966. Field checked 1967
Hydrography compiled from information furnished by
Minnesota Department of Conservation
Polyconic projection, 1927 North American datum
10,000-foot grid based on Minnesota coordinate system, south zone
1000-meter Universal Transverse Mercator grid ticks,
zone 15, shown in blue
Red tint indicates areas in which only landmark buildings are shown
Fine red dashed lines indicate selected fence and field lines where
generally visible on aerial photographs. This information is unchecked



ROAD CLASSIFICATION

Heavy-duty	Light-duty
Medium-duty	Unimproved dirt
Interstate Route	U.S. Route
	State Route



THIS MAP COMPLIES WITH NATIONAL MAP ACCURACY STANDARDS
FOR SALE BY U.S. GEOLOGICAL SURVEY, DENVER, COLORADO 80225, OR WASHINGTON, D. C. 20242
A FOLDER DESCRIBING TOPOGRAPHIC MAPS AND SYMBOLS IS AVAILABLE ON REQUEST

Revision shown in purple compiled from aerial photographs
taken 1972. This information not field checked
Purple tint indicates extension of urban areas

ANOKA, MINN.
NW/4 ANOKA 15' QUADRANGLE
N4507.5—W9322.5/7.5
1967
PHOTOREVISED 1972
AMS 7374 III NW—SERIES V872

MAP AND AIR PHOTO
LIBRARY
OCT 10 1973