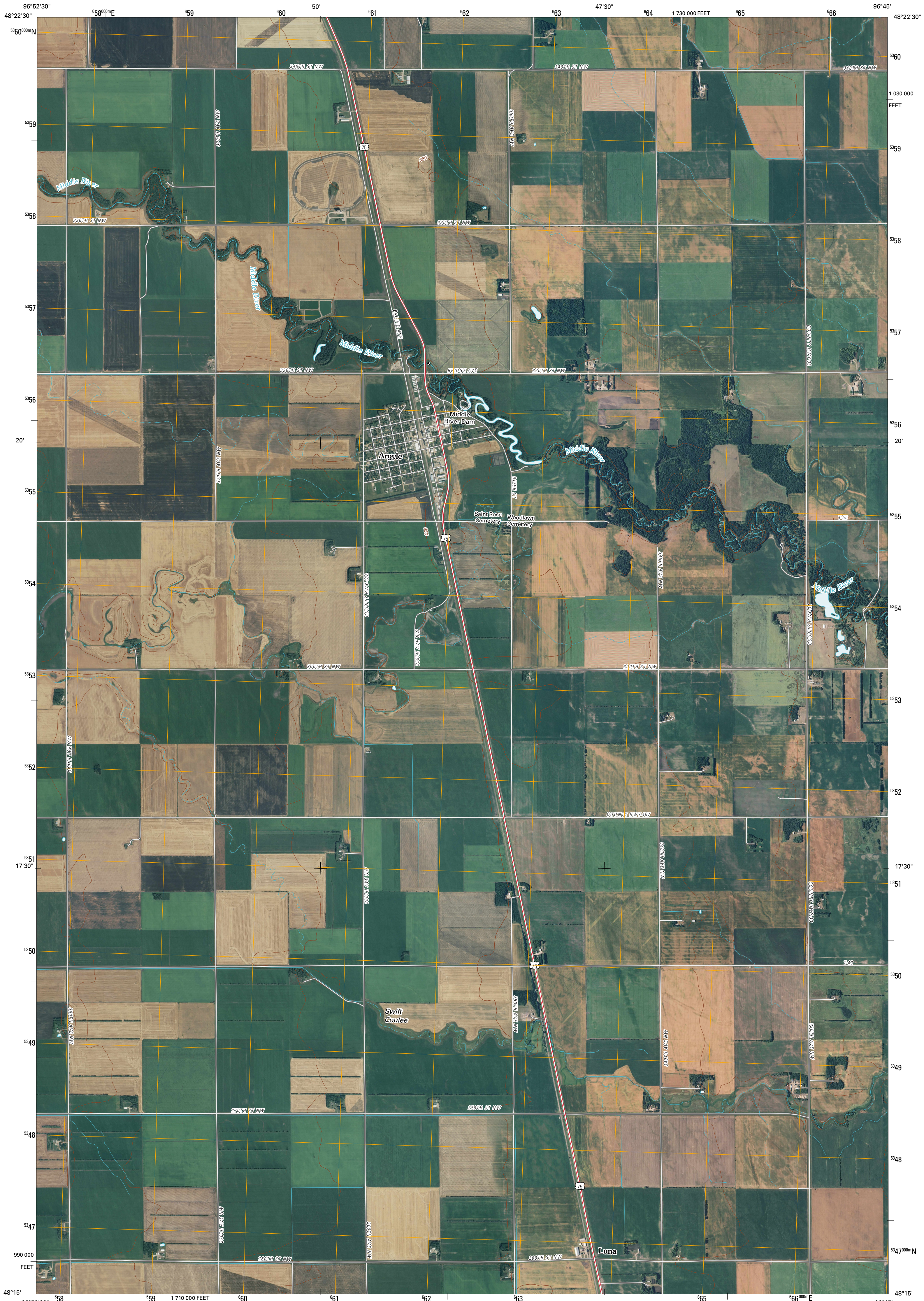




U.S. DEPARTMENT OF THE INTERIOR
U. S. GEOLOGICAL SURVEY



ARGYLE QUADRANGLE
MINNESOTA
7.5-MINUTE SERIES

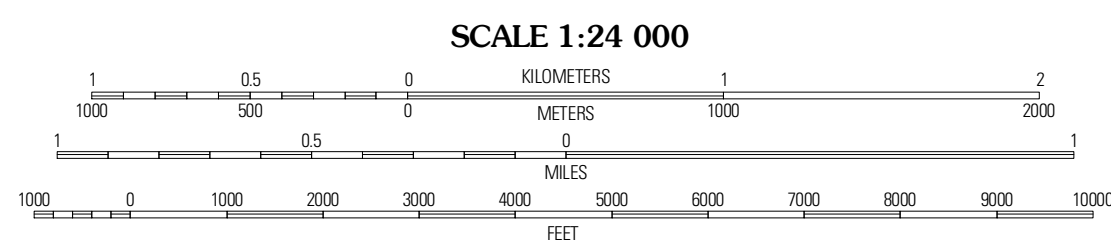


Produced by the United States Geological Survey
North American Datum of 1983 (NAD83)
World Geodetic System of 1984 (WGS84). Projection and
1 000-meter grid: Universal Transverse Mercator, Zone 14U
10 000-foot ticks: Minnesota Coordinate System of 1983
(north zone)

Imagery.....NAIP, June 2009
Roads.....©2006-2010 Tele Atlas
Names.....GNIS, 2008
Hydrography.....National Hydrography Dataset, 2009
Contours.....National Elevation Dataset, 1999

UTM GRID AND 2010 MAGNETIC NORTH DECLINATION AT CENTER OF SHEET

U.S. National Grid
100,000-m Square Grid
PU
Grid Zone Designation
14U



CONTOUR INTERVAL 10 FEET
NORTH AMERICAN VERTICAL DATUM OF 1988

This map was produced to conform with version 0.5.10 of the
draft USGS Standards for 7.5-Minute Quadrangle Maps.
A metadata file associated with this product is draft version 0.5.11

ROAD CLASSIFICATION

Interstate Route (Red line with blue shield)
US Route (Red line)
Ramp (Red line with blue arrow)
State Route (Grey line)
Local Road (Grey line)
4WD (Dashed grey line)

QUADRANGLE LOCATION

Stephen West	Stephen East	Florlan
Stephen SW	Argyle	Florlan SW
Alvarado	Warren	Roan

ADJOINING 7.5' QUADRANGLES

MINNESOTA

ARGYLE, MN
2010