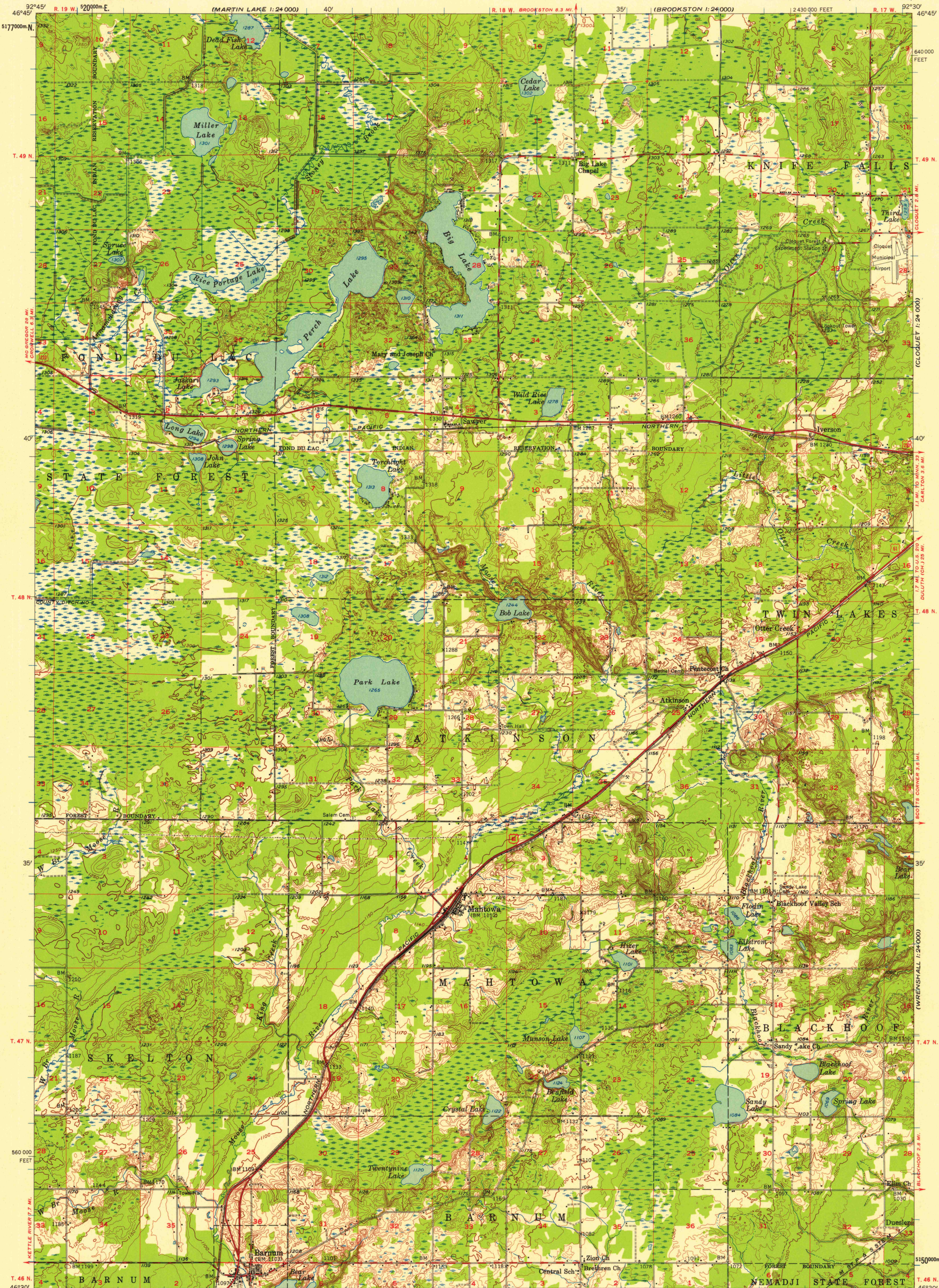
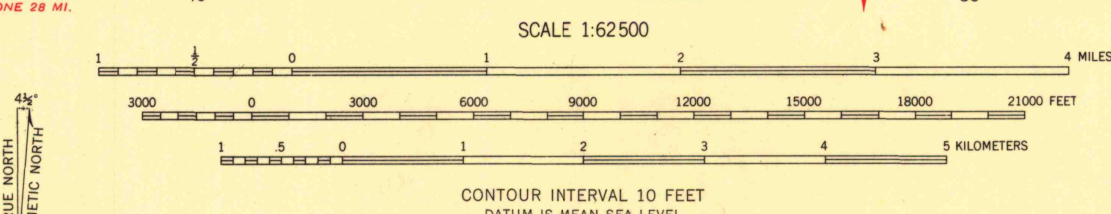


(SAGINAW 1:24,000)



Mapped, edited, and published by the Geological Survey
Control by USGS and USC&GS
Topography from aerial photographs by Kelsh plottor
Aerial photographs taken 1952-1953. Field check 1954 and 1956
Polyconic projection. 1927 North American datum
10,000-foot grid based on Minnesota coordinate system, central zone
1000-meter Universal Transverse Mercator grid ticks,
zone 15, shown in blue



ROAD CLASSIFICATION
Heavy-duty ——— Light-duty ———
Medium-duty ——— Unimproved dirt - - - - -
U.S. Route



USGS Historical Topographic Division
The east half and NW/4 of this area also covered by 1:24,000 scale maps of Iverson, Atkinson, and 7.5 minute quadrangles, surveyed 1954
BARNUM, MINN.
N 4630—W 9230/15

U.S.G.S.
FILE COPY
TOPOGRAPHIC DIVISION

APPROXIMATE MEAN DECLINATION, 1956
THIS MAP COMPLIES WITH NATIONAL MAP ACCURACY STANDARDS
FOR SALE BY U. S. GEOLOGICAL SURVEY, DENVER 2, COLORADO OR WASHINGTON 25, D. C.