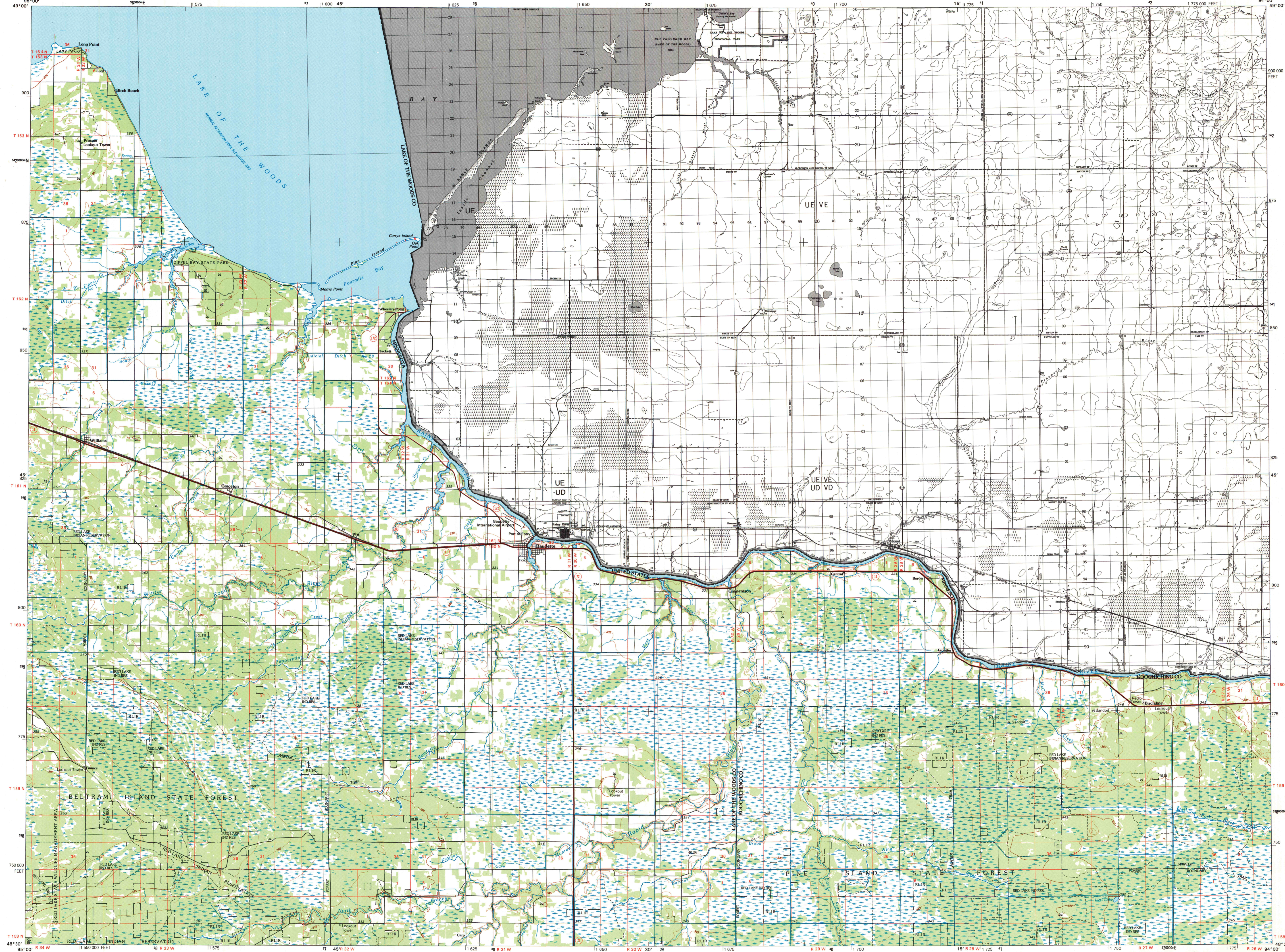


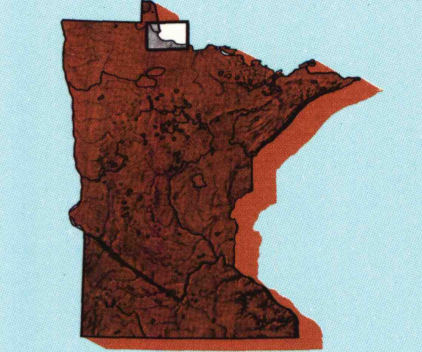
BAUDETTE, MINNESOTA-ONTARIO

30 X 60 MINUTE SERIES (TOPOGRAPHIC)



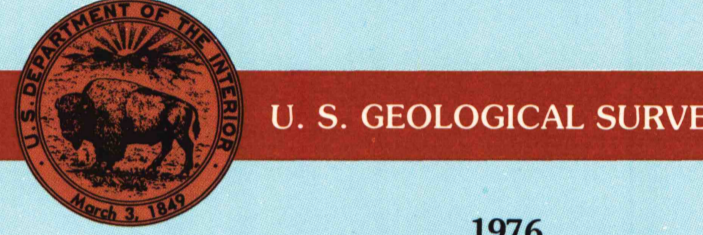
Baudette MINNESOTA-ONTARIO

1:100 000-scale metric topographic map



30 X 60 MINUTE QUADRANGLE SHOWING

- Contours and elevations in meters
- Highways, roads and other manmade structures
- Water features
- Woodland areas
- Geographic names



Produced by the United States Geological Survey
 Compiled from USGS 1:24 000-scale topographic maps dated 1967-68. Planimetry revised from aerial photographs taken 1974 and other source data. Revised information not field checked. Map edited 1976
 Canadian portion copied from Department of Energy, Mines and Resources, 1:50 000-scale topographic maps dated 1979-80
 Canadian portion of this map © by Her Majesty the Queen in Right of Canada, and may not be reproduced or redistributed without express consent of Energy, Mines and Resources Canada, 4th Floor, 615 Booth Street, Ottawa, Ontario, K1A 0E9
 1927 North American Datum (NAD 27). Projection and 10 000-meter grid: Universal Transverse Mercator, zone 19
 25 000-foot ticks; Minnesota coordinate system, north zone
 The difference between NAD 27 and North American Datum of 1983 (NAD 83) is too small to show at this scale. The values of the shift between the datums for 7.5-minute intersections are given in USGS Bulletin 1875
 There may be private inholdings within the boundaries of the National of State reservations shown on this map
 The U.S. portion of this map photostereoscopic using 1987 and 1990 photographs
 No major culture or drainage changes found
 CONTOUR INTERVAL 5 METERS IN UNITED STATES
 CONTOUR INTERVAL 50 FEET IN CANADA
 NATIONAL GEODETIC VERTICAL DATUM OF 1929
 ELEVATIONS SHOWN TO THE NEAREST METER IN UNITED STATES
 ELEVATIONS SHOWN TO THE NEAREST FOOT IN CANADA
 THE U.S. PORTION OF THIS MAP COMPLIES WITH NATIONAL MAP ACCURACY STANDARDS

Meters	Feet
1	3.2808
2	6.5617
3	9.8425
4	13.1234
5	16.4042
6	19.6850
7	22.9659
8	26.2467
9	29.5275
10	32.8084

To convert meters to feet multiply by 3.2808
 To convert feet to meters multiply by 0.3048

UTM grid convergence (GM) and 1978 magnetic declination (MD) at center of map
 Diagram is approximate

ADJOINING MAPS	1	2	3
1 Angle Inlet			
2 Oak Island			
3			
4 Roseau			
5 International Falls			
6 Circle			
7 Upper Red Lake			
8 Littlefork			

FOR SALE BY U.S. GEOLOGICAL SURVEY
 DENVER, COLORADO 80225, OR RESTON, VIRGINIA 22092
A.H. ROBINSON
 MAP LIBRARY
 FEB 6 1995
 U.S. Regional Depository Copy
 DO NOT DISCARD
 University of Wisconsin
 Madison

Topographic Map Symbols

Primary highway, hard surface	
Secondary highway, hard surface	
Light duty road, principal street, hard or improved surface	
Other road or street; trail	
Route marker: Interstate; U.S.; State	
Railroad: standard gauge, narrow gauge	
Bridge: overpass, underpass	
Tunnel: road, railroad	
Built up area; locality; elevation	
Airport; landing field; landing strip	
National boundary	
State boundary	
County boundary	
Civil township boundary	
National or State reservation boundary	
Land grant boundary	
U.S. public lands survey: range, township, section	
Range, township, section line: protracted	
Power transmission line; pipeline	
Dam; dam with lock	
Cemetery; building	
Wellhead; water well; spring	
Mine shaft; adit or cave; mine, quarry, gravel pit	
Campground; picnic area; U.S. location monument	
Ruins; cliff dwelling	
Disturbed surface: strip mine, lava; sand	
Contours: index, intermediate, supplementary	
Bathymetric contours: index, intermediate	
Stream, lake, perennial, intermittent	
Rapids, large and small; falls, large and small	
Area to be submerged; marsh, swamp	
Land subject to controlled inundation; woodland	
Scrub; mangrove	
Orchard; vineyard	

A pamphlet describing topographic maps is available on request
 3006-1/8