

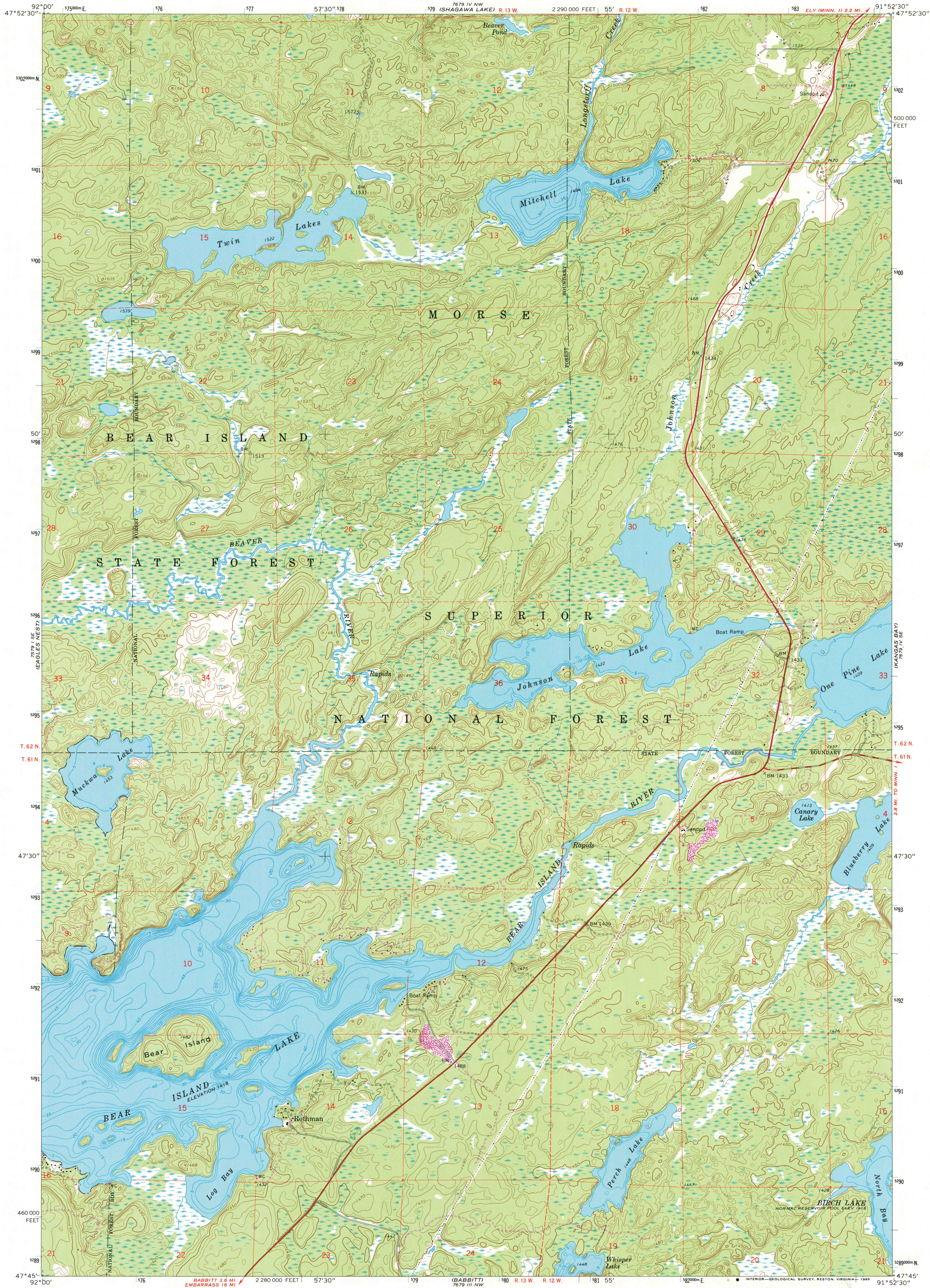
229 LINE
(CRAB LAKE)

UNITED STATES
DEPARTMENT OF THE INTERIOR
GEOLOGICAL SURVEY

STATE OF MINNESOTA
DEPARTMENT OF ADMINISTRATION

BEAR ISLAND QUADRANGLE
MINNESOTA - ST. LOUIS CO.
7.5 MINUTE SERIES (TOPOGRAPHIC)

7679 IV NE
TO ELY



229 LINE
(CRAB LAKE)

Mapped, edited, and published by the Geological Survey

Control by USGS and NOS/NOAA

Topography by photogrammetric methods from aerial photographs taken 1964. Field checked 1965

Depth curves and soundings compiled from charts furnished by Minnesota Department of Conservation

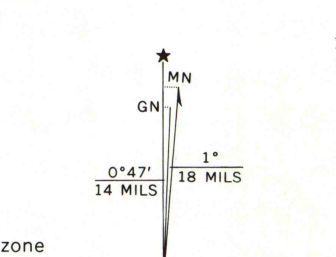
Polyconic projection. 1927 North American Datum

10,000-foot grid based on Minnesota coordinate system, north zone

1000-meter Universal Transverse Mercator grid ticks, zone 15, shown in blue

To place on the predicted North American Datum 1983 move the projection lines 5 meters north and 13 meters east as shown by dashed corner ticks

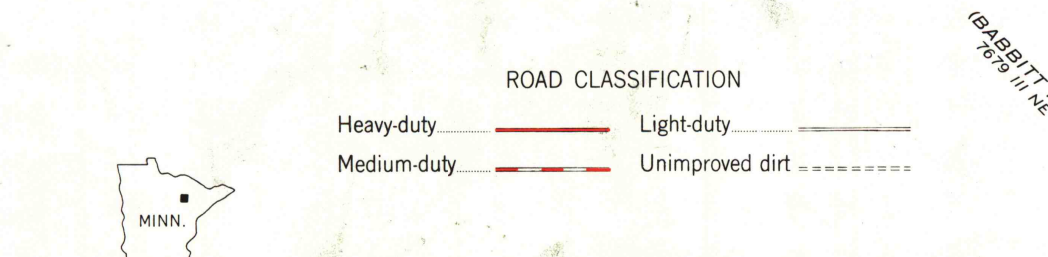
There may be private inholdings within the boundaries



UTM GRID AND 1986 MAGNETIC NORTH DECLINATION AT CENTER OF SHEET
Revisions shown in purple and woodland compiled from aerial photographs taken 1982 and other source data. Partial field check by U. S. Forest Service. Map edited 1986

SCALE 1:24,000
CONTOUR INTERVAL 10 FEET
NATIONAL GEODETIC VERTICAL DATUM OF 1929

THIS MAP COMPLIES WITH NATIONAL MAP ACCURACY STANDARDS
FOR SALE BY U. S. GEOLOGICAL SURVEY
DENVER, COLORADO 80225, OR RESTON, VIRGINIA 22092
A FOLDER DESCRIBING TOPOGRAPHIC MAPS AND SYMBOLS IS AVAILABLE ON REQUEST



BEAR ISLAND, MINN.
47091-G8-TF-024
1965
PHOTOREVISED 1986

MAY 20 1987

U. S. Regional Depository Copy