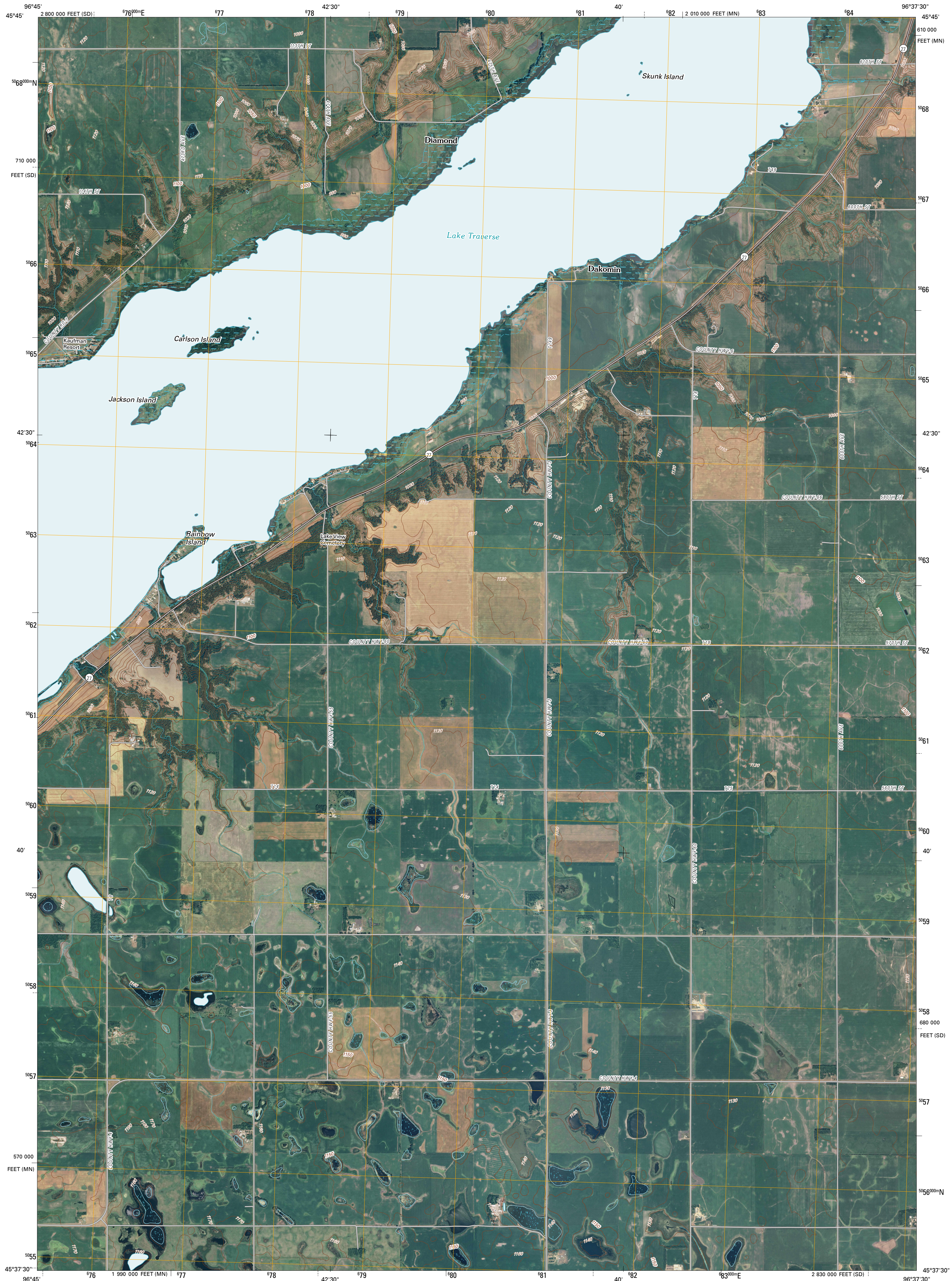




U.S. DEPARTMENT OF THE INTERIOR  
U. S. GEOLOGICAL SURVEY

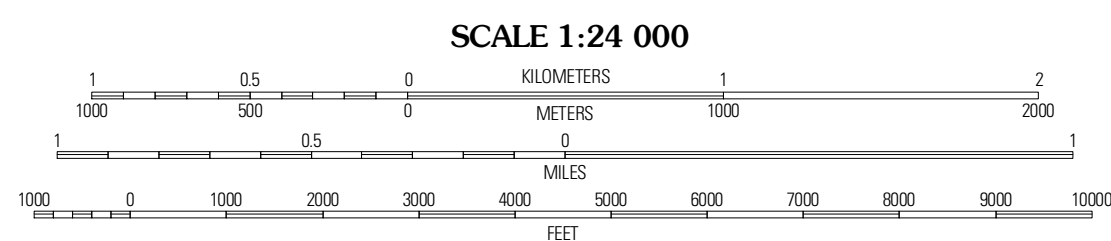
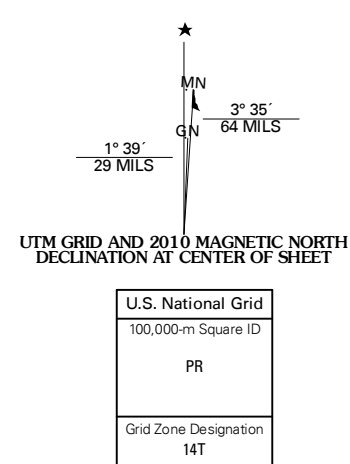


BEARDSLEY NW QUADRANGLE  
MINNESOTA-SOUTH DAKOTA  
7.5-MINUTE SERIES



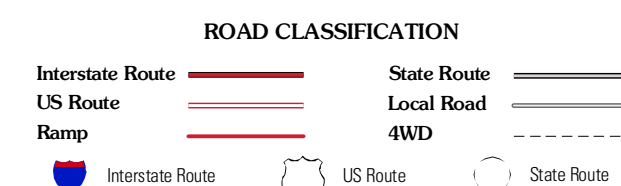
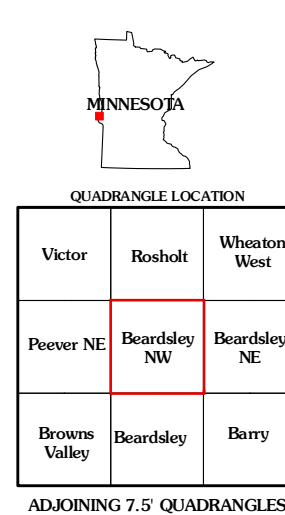
Produced by the United States Geological Survey  
North American Datum of 1983 (NAD83)  
World Geodetic System of 1984 (WGS84) Projection and  
1 000-meter grid: Universal Transverse Mercator, Zone 14T  
10 000-foot ticks: Minnesota Coordinate System of 1983  
(central zone) and South Dakota Coordinate System of 1983  
(north zone)

Imagery: N/AIP, June 2009  
Roads: 2006-2010 Tele Atlas  
Names: GNSI, 2008  
Hydrography: National Hydrography Dataset, 2009  
Contours: National Elevation Dataset, 1999



CONTOUR INTERVAL 10 FEET  
NORTH AMERICAN VERTICAL DATUM OF 1988

This map was produced to conform with version 0.5.10 of the  
draft USGS Standards for 7.5-Minute Quadrangle Maps.  
A metadata file associated with this product is draft version 0.5.11



BEARDSLEY NW, MN-SD  
2010