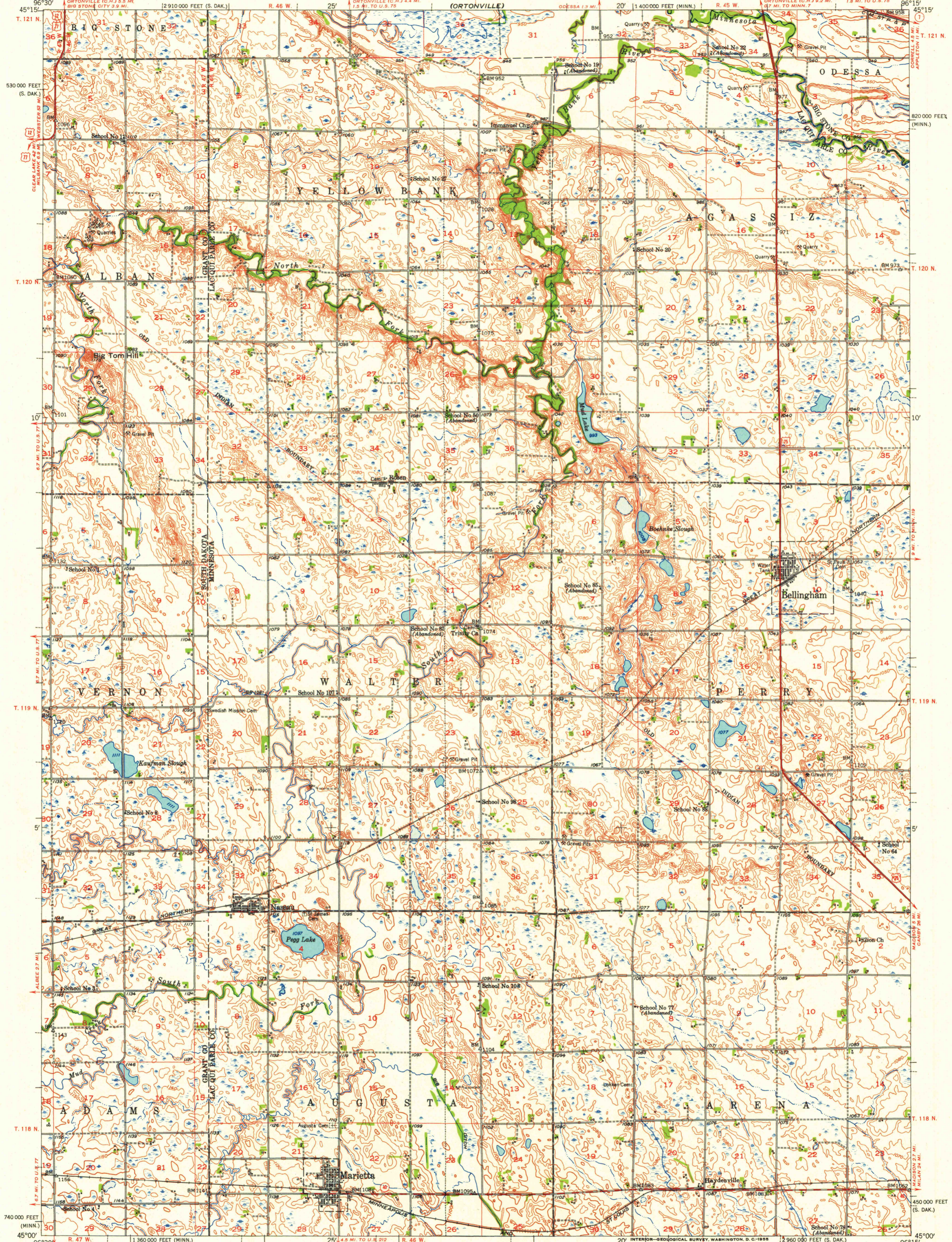


(BIG STONE LAKE)

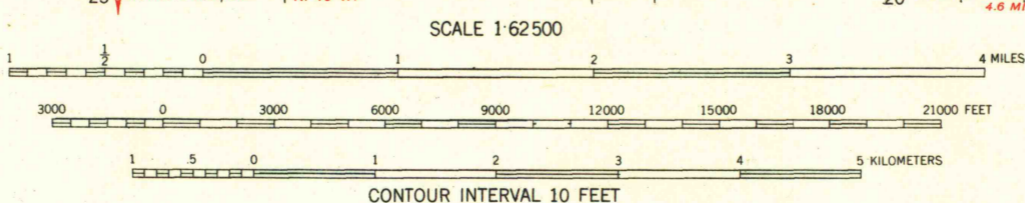
UNITED STATES
DEPARTMENT OF THE INTERIOR
GEOLOGICAL SURVEY

STATE OF MINNESOTA
DEPARTMENT OF CONSERVATION
CHESTER S. WILSON, COMMISSIONER

BELLINGHAM QUADRANGLE
MINNESOTA-SOUTH DAKOTA
15 MINUTE SERIES (TOPOGRAPHIC)



Mapped, edited, and published by the Geological Survey
Control by USGS and USC&GS
Topography from aerial photographs by Kesh plotter
and by plane-table surveys 1953. Aerial photographs taken 1951
Polyconic projection. 1927 North American datum
10,000-foot grids based on Minnesota coordinate system,
south zone, and South Dakota coordinate system, north zone



ROAD CLASSIFICATION

Heavy-duty	4 LANE 12 LANE	Light-duty
Medium-duty	4 LANE 12 LANE	Unimproved dirt
U. S. Route		State Route

BELLINGHAM, MINN.-S. DAK.
N4500-W9619/75

1953

UNIVERSITY OF WISCONSIN
Department of

THIS MAP COMPLIES WITH NATIONAL MAP ACCURACY STANDARDS
FOR SALE BY U. S. GEOLOGICAL SURVEY, FEDERAL CENTER, DENVER, COLORADO OR WASHINGTON 25, D. C.
A FOLDER DESCRIBING TOPOGRAPHIC MAPS AND SYMBOLS IS AVAILABLE ON REQUEST