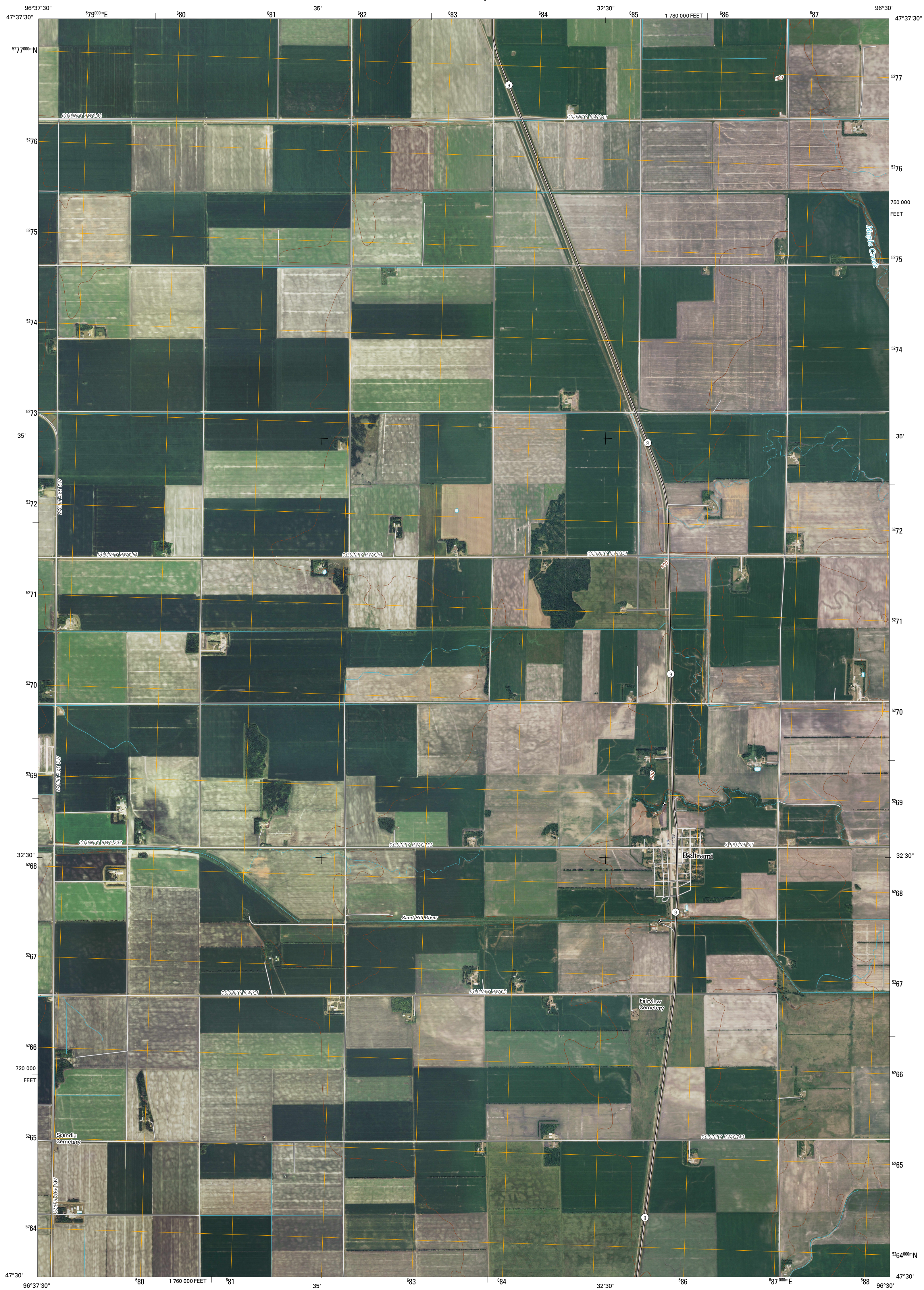




U.S. DEPARTMENT OF THE INTERIOR  
U. S. GEOLOGICAL SURVEY



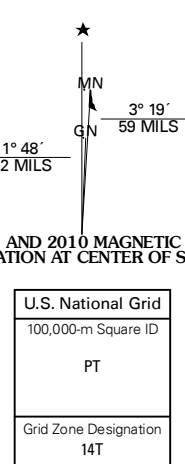
BELTRAMI QUADRANGLE  
MINNESOTA  
7.5-MINUTE SERIES



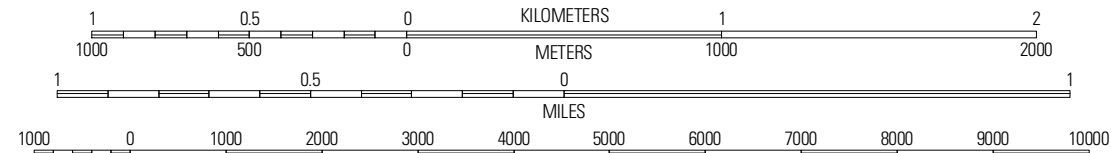
Produced by the United States Geological Survey  
North American Datum of 1983 (NAD83)  
Roads.....©2006-2010 Tele Atlas  
Names.....GNS, 2008  
Hydrography.....National Hydrography Dataset, 2009  
Contours.....National Elevation Dataset, 1999

Imagery.....NAP, June 2009  
Roads.....©2006-2010 Tele Atlas  
Names.....GNS, 2008  
Hydrography.....National Hydrography Dataset, 2009  
Contours.....National Elevation Dataset, 1999

UTM GRID AND 2010 MAGNETIC NORTH DECLINATION AT CENTER OF SHEET



SCALE 1:24 000



CONTOUR INTERVAL 10 FEET  
NORTH AMERICAN VERTICAL DATUM OF 1988

This map was produced to conform with version 0.5.10 of the draft USGS Standards for 7.5-Minute Quadrangle Maps. A metadata file associated with this product is draft version 0.5.11

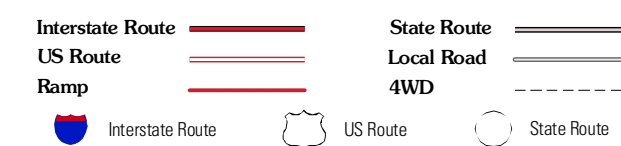


QUADRANGLE LOCATION

Grand	Greenview	Harold
Beltrami SW	<b>Beltrami</b>	Melvin
Ada NW	Lockhart	Twin Valley NW

ADJOINING 7.5 QUADRANGLES

ROAD CLASSIFICATION



BELTRAMI, MN  
2010