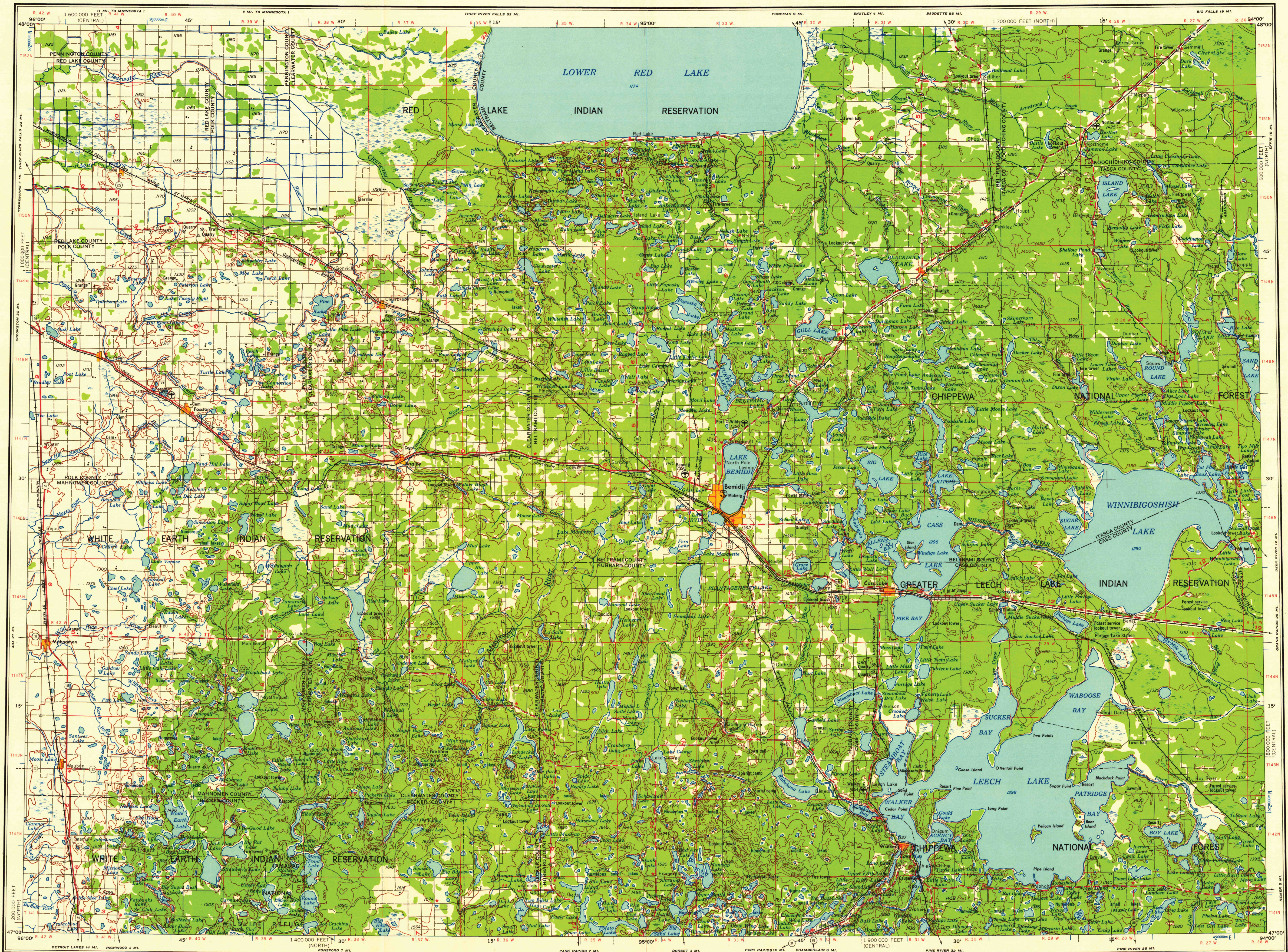


U.S.G.S. FILE COPY TOPOGRAPHIC DIVISION



Prepared by the Army Map Service (ASCTT), Corps of Engineers, U. S. Army, Washington, D. C. Compiled in 1955 by photogrammetric methods. Horizontal and vertical control by USGS and USC&GS. Aerial photography 1953. Photography field annotated in 1954. 100,000-foot grids based on Minnesota coordinate system, north and central zones. 10,000-meter Universal Transverse Mercator grid ticks, zone 15, shown in blue.

LEGEND

ROAD DATA 1954
Figures in red denote approximate distances in miles between stars

POPULATED PLACES

LOS ANGELES
OMAHA
GALVESTON
Laramie
Grand Coulee

RAILROADS

BOUNDARIES

LANDMARKS

SYMBOLS

ROADS

RAILROADS

BOUNDARIES

LANDMARKS

SYMBOLS

Scale 1:250,000

0 5 10 15 20 25 30 Statute Miles

0 5 10 15 20 25 30 Kilometers

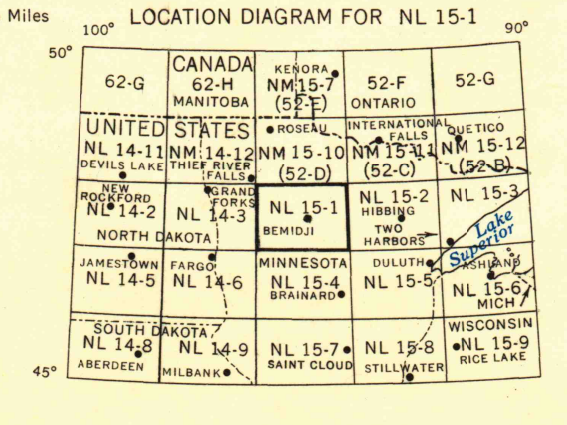
0 5 10 15 20 25 30 Nautical Miles

CONTOUR INTERVAL 50 FEET

TRANSVERSE MERCATOR PROJECTION

1955 MAGNETIC DECLINATION FOR THIS SHEET VARIES FROM 7°45' EASTERLY FOR THE CENTER OF THE WEST EDGE TO 9°45' EASTERLY FOR THE CENTER OF THE EAST EDGE. MEAN ANNUAL CHANGE IS 0°03' WESTERLY.

FOR SALE BY U. S. GEOLOGICAL SURVEY, DENVER 2, COLORADO OR WASHINGTON 25, D. C.



INTERIOR—GEOLOGICAL SURVEY, WASHINGTON, D. C.—1958—NS M R-2666

TOWNSHIP OR RANGE LINE

LAND GRANT BOUNDARY

USGS Historical File Topographic Division

SECTIONED TOWNSHIP

6	5	4	3	2	1
7	8	9	10	11	12
13	14	15	16	17	18
19	20	21	22	23	24
25	26	27	28	29	30
31	32	33	34	35	36

BEMIDJI, MINNESOTA

U.S.G.S. FILE COPY TOPOGRAPHIC DIVISION

APR 25 1958 2920