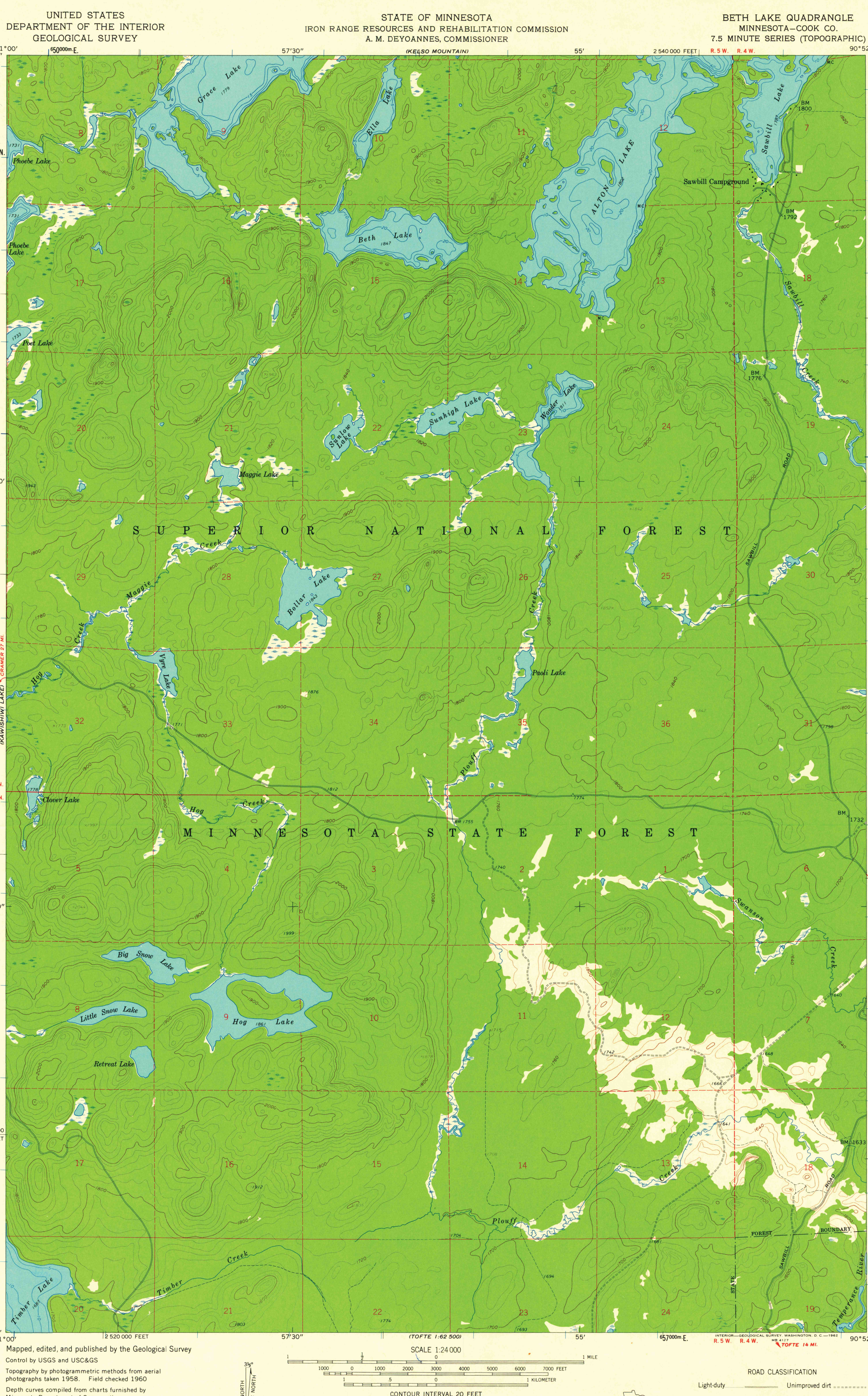


Lake Polly
47°52'30"
5303000m N
50'
50'
47°30"
47°30"
47°000 FEET
47°45'
91°00'
650000m E
57°30"
55'
657000m E
90°52'30"
47°52'30"



91°00'
57°30"
55'
657000m E
90°52'30"
47°52'30"
500 000 FEET
50'
50'
47°30"
47°30"
47°000 FEET
47°45'
91°00'
650000m E
57°30"
55'
657000m E
90°52'30"
47°52'30"

Mapped, edited, and published by the Geological Survey
Control by USGS and USC&GS
Topography by photogrammetric methods from aerial
photographs taken 1958. Field checked 1960
Depth curves compiled from charts furnished by
Minnesota Department of Conservation
Polyconic projection. 1927 North American datum
10,000-foot grid based on Minnesota coordinate system, north zone
1000-meter Universal Transverse Mercator grid ticks,
zone 15, shown in blue

THIS MAP COMPLIES WITH NATIONAL MAP ACCURACY STANDARDS
FOR SALE BY U. S. GEOLOGICAL SURVEY, DENVER 25, COLORADO OR WASHINGTON 25, D. C.
A FOLDER DESCRIBING TOPOGRAPHIC MAPS AND SYMBOLS IS AVAILABLE ON REQUEST

MAP AND AIR PHOTO LIBRARY