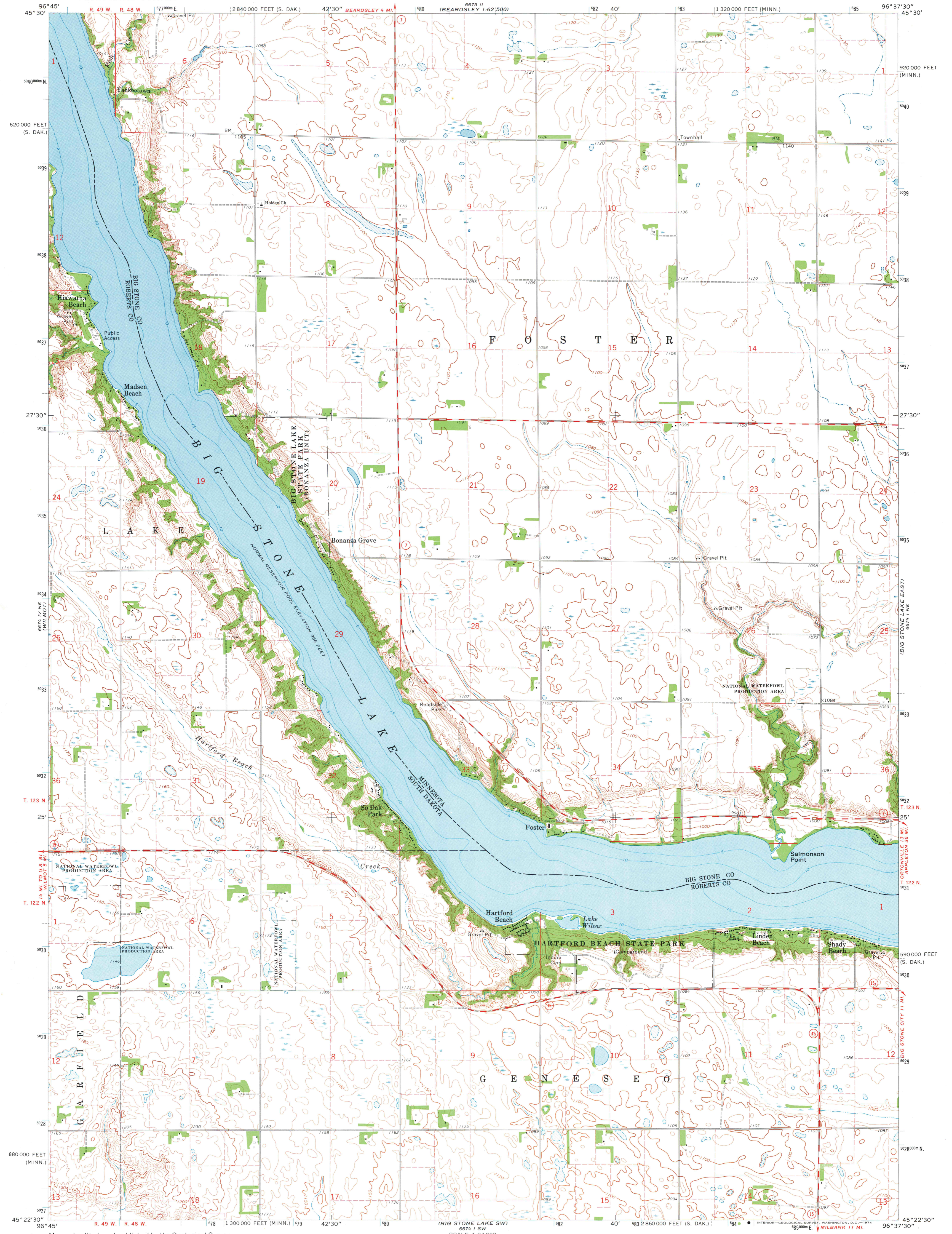
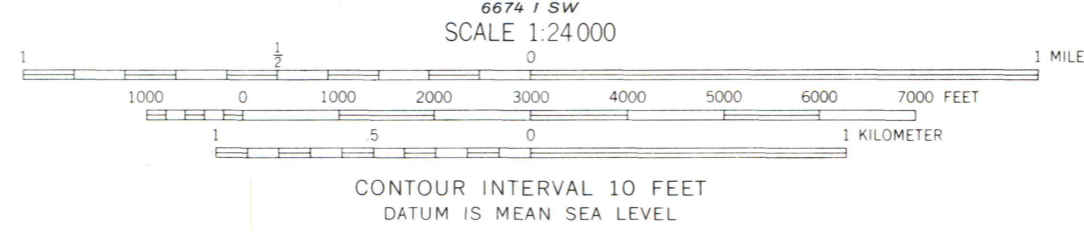


UNITED STATES  
DEPARTMENT OF THE INTERIOR  
GEOLOGICAL SURVEY

BIG STONE LAKE WEST QUADRANGLE  
MINNESOTA—SOUTH DAKOTA  
7.5 MINUTE SERIES (TOPOGRAPHIC)  
NW 1/4 BIG STONE LAKE 15' QUADRANGLE



Mapped, edited, and published by the Geological Survey  
Control by USGS and USC&GS  
Topography by photogrammetric methods from aerial photographs taken 1971. Field checked 1971  
Hydrography compiled from information furnished by Minnesota Department of Conservation  
Projection: Minnesota coordinate system, south zone (Lambert conformal conic)  
10,000-foot grid ticks based on Minnesota coordinate system, south zone and South Dakota coordinate system, north zone  
1000-meter Universal Transverse Mercator grid ticks, zone 14, shown in blue. 1927 North American datum  
Fine red dashed lines indicate selected fence and field lines where generally visible on aerial photographs. This information is unchecked



ROAD CLASSIFICATION

Primary highway, hard surface	Light-duty road, hard or improved surface
Secondary highway, hard surface	Unimproved road
Interstate Route	U. S. Route
	State Route



THIS MAP COMPLIES WITH NATIONAL MAP ACCURACY STANDARDS  
FOR SALE BY U. S. GEOLOGICAL SURVEY, DENVER, COLORADO 80225, OR WASHINGTON, D. C. 20242  
A FOLDER DESCRIBING TOPOGRAPHIC MAPS AND SYMBOLS IS AVAILABLE ON REQUEST

BIG STONE LAKE WEST, MINN.—S. DAK.  
NW 1/4 BIG STONE LAKE 15' QUADRANGLE  
N4522.5—W9637.5/7.5

1971

AMS 6674 1 NW—SERIES V872

MAP AND AIR PHOTO  
LIBRARY  
MAY 19 1974

University of Wisconsin