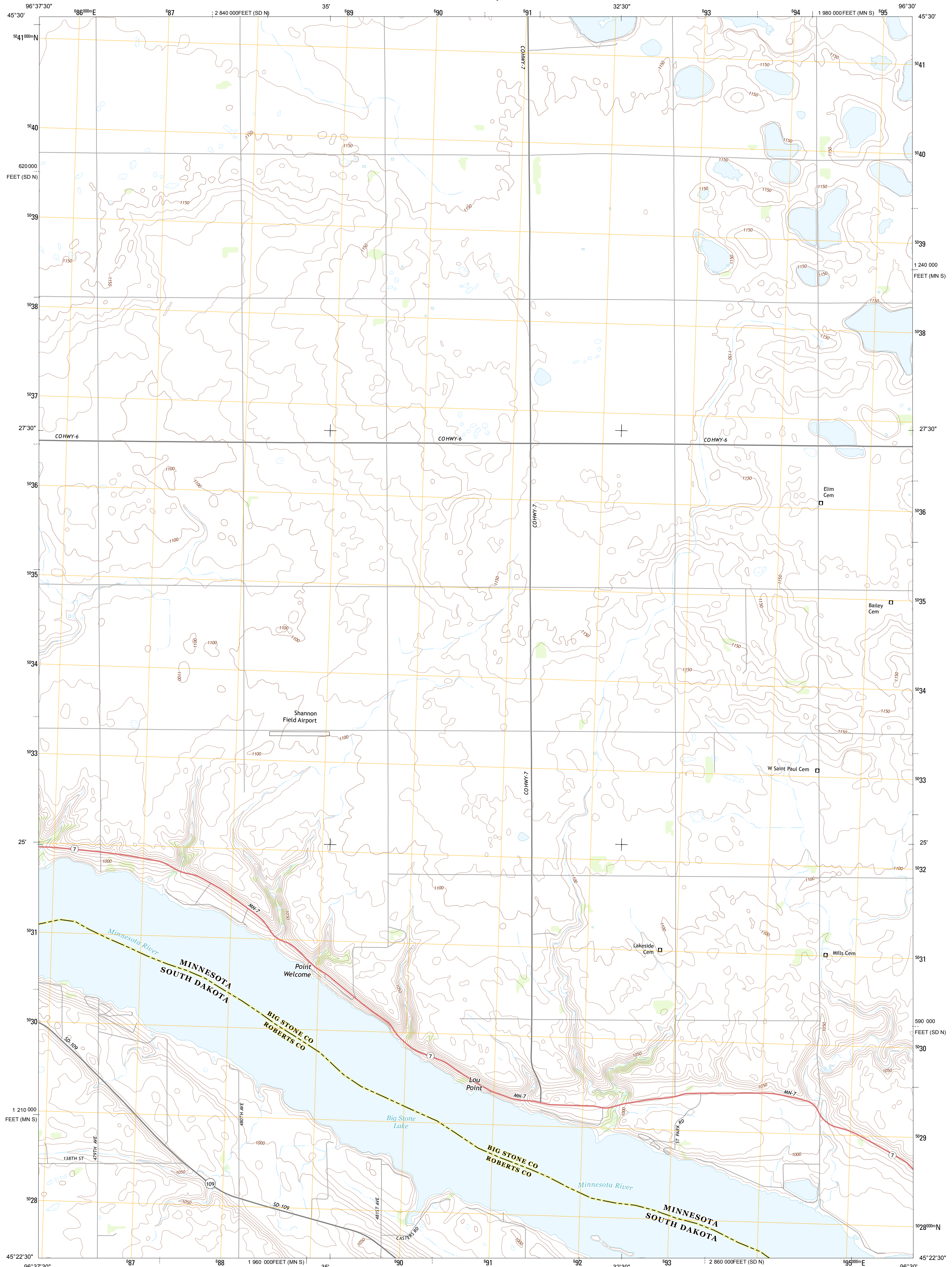




U.S. DEPARTMENT OF THE INTERIOR  
U. S. GEOLOGICAL SURVEY

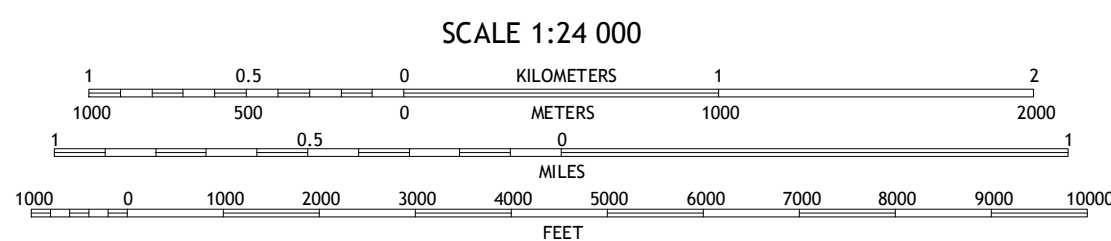
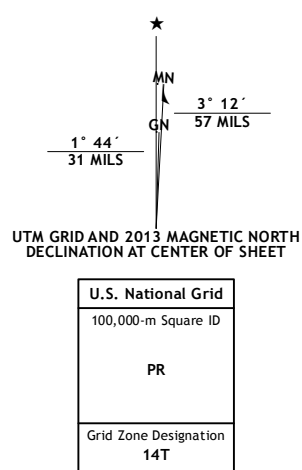


**BIG STONE LAKE EAST QUADRANGLE**  
MINNESOTA-SOUTH DAKOTA  
7.5-MINUTE SERIES



Produced by the United States Geological Survey  
North American Datum of 1983 (NAD83)  
World Geodetic System of 1984 (WGS84). Projection and  
1 000-meter grid: Universal Transverse Mercator, Zone 14T  
10 000-foot ticks: Minnesota Coordinate System of 1983 (south zone), South Dakota Coordinate System of 1983 (north zone)

Imagery.....NAP, July 2010 - July 2012  
Roads.....©2006-2012 TomTom  
Names.....GNIS, 2013  
Hydrography.....National Hydrography Dataset, 2010  
Contours.....National Elevation Dataset, 1999  
Boundaries.....Census, IBWC, IBC, USGS, 1972 - 2012

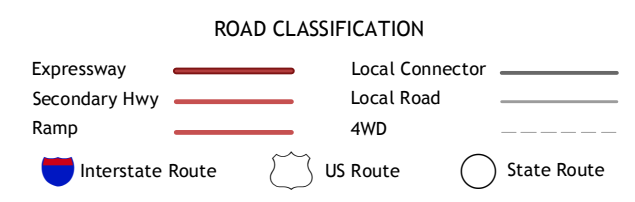


CONTOUR INTERVAL 10 FEET  
NORTH AMERICAN VERTICAL DATUM OF 1988  
This map was produced to conform with the  
National Geospatial Program US Topo Product Standard, 2011.  
A metadata file associated with this product is draft version 0.6.11



QUADRANGLE LOCATION

Beardsley	Barry	Graceville
Big Stone Lake West	Big Stone Lake East	Clinton
Big Stone Lake SW	Big Stone Lake SE	Ortonville



**BIG STONE LAKE EAST, MN-SD**  
2013

ADJOINING 7.5 QUADRANGLES